

Product datasheet for **CF803797**

IGSF11 Mouse Monoclonal Antibody [Clone ID: OTI2H1]

Product data:

Product Type:	Primary Antibodies
Clone Name:	OTI2H1
Applications:	IHC, WB
Recommended Dilution:	WB 1:2000
Reactivity:	Human, Mouse, Rat
Host:	Mouse
Isotype:	IgG1
Clonality:	Monoclonal
Immunogen:	Human recombinant protein fragment corresponding to amino acids 23-241 of human IGSF11 (NP_689751) produced in E.coli.
Formulation:	Lyophilized powder (original buffer 1X PBS, pH 7.3, 8% trehalose)
Reconstitution Method:	For reconstitution, we recommend adding 100uL distilled water to a final antibody concentration of about 1 mg/mL. To use this carrier-free antibody for conjugation experiment, we strongly recommend performing another round of desalting process. (OriGene recommends Zeba Spin Desalting Columns, 7KMWCO from Thermo Scientific)
Purification:	Purified from mouse ascites fluids or tissue culture supernatant by affinity chromatography (protein A/G)
Conjugation:	Unconjugated
Storage:	Store at -20°C as received.
Stability:	Stable for 12 months from date of receipt.
Gene Name:	immunoglobulin superfamily member 11
Database Link:	NP_689751 Entrez Gene 207683 Mouse Entrez Gene 152404 Human Q5DX21
Background:	IGSF11 is an immunoglobulin (Ig) superfamily member that is preferentially expressed in brain and testis. It shares significant homology with coxsackievirus and adenovirus receptor (CXADR; MIM 602621) and endothelial cell-selective adhesion molecule (ESAM). [supplied by OMIM, Apr 2005]

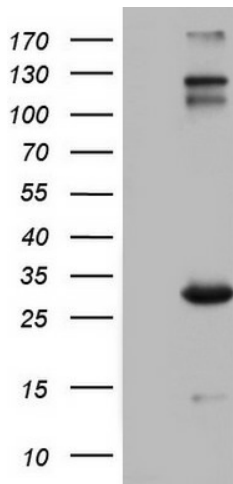


[View online »](#)

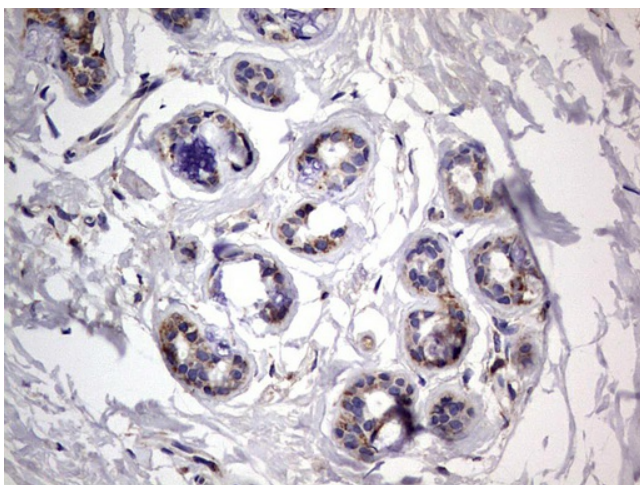
Synonyms: BT-IgSF; CT119; CXADRL1; Igsf13; VSIG3

Protein Families: Transmembrane

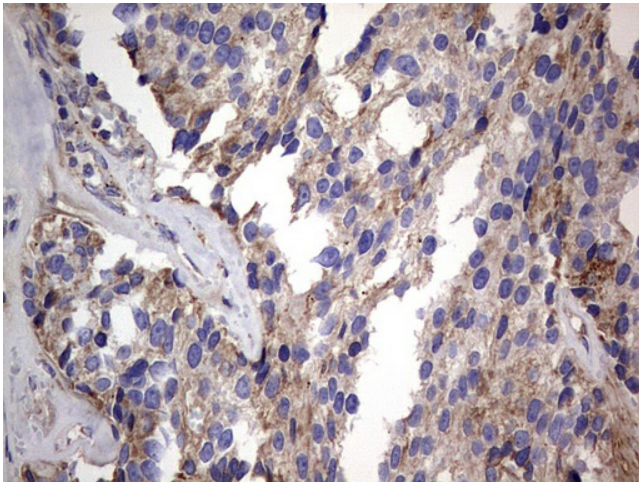
Product images:



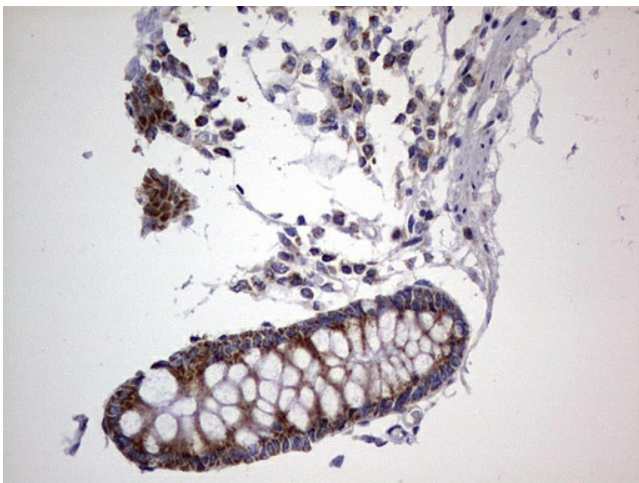
HEK293T cells were transfected with the pCMV6-ENTRY control (Cat# [PS100001], Left lane) or pCMV6-ENTRY IGSF11 (Cat# [RC206735], Right lane) cDNA for 48 hrs and lysed. Equivalent amounts of cell lysates (5 ug per lane) were separated by SDS-PAGE and immunoblotted with anti-IGSF11 (Cat# [TA803797]). Positive lysates [LY407451] (100ug) and [LC407451] (20ug) can be purchased separately from OriGene.



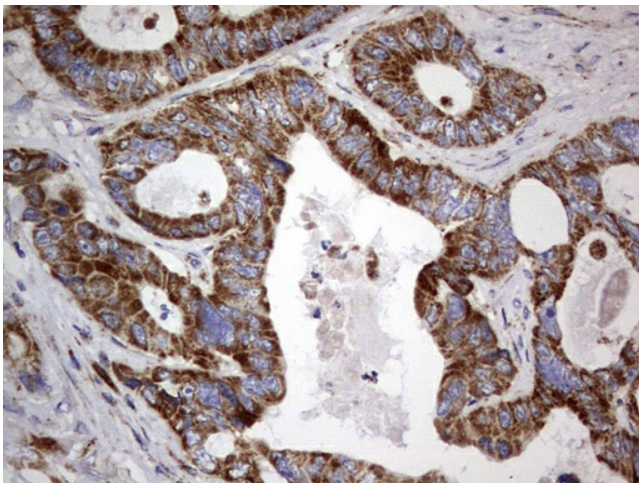
Immunohistochemical staining of paraffin-embedded Human breast tissue within the normal limits using anti-IGSF11 mouse monoclonal antibody. ([TA803797]) Dilution: 1:150



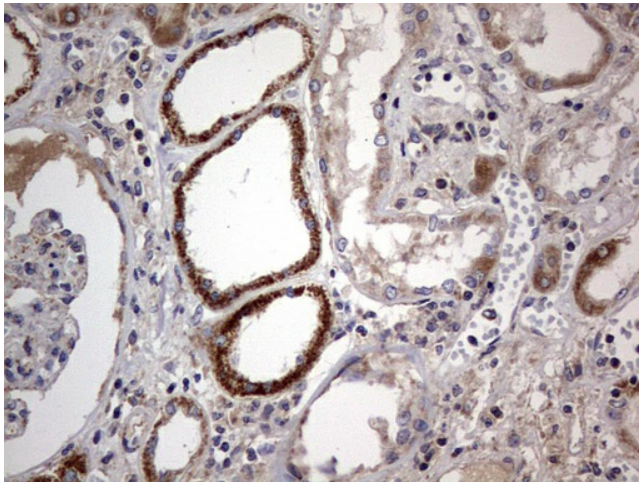
Immunohistochemical staining of paraffin-embedded Adenocarcinoma of Human breast tissue using anti-IGSF11 mouse monoclonal antibody. ([TA803797]) Dilution: 1:150



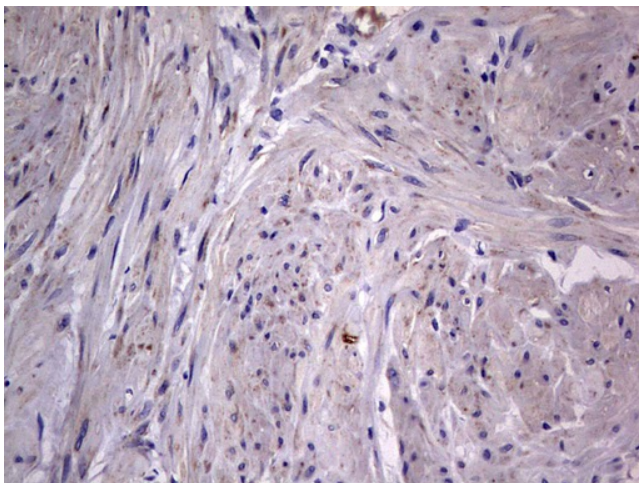
Immunohistochemical staining of paraffin-embedded Human colon tissue within the normal limits using anti-IGSF11 mouse monoclonal antibody. ([TA803797]) Dilution: 1:150



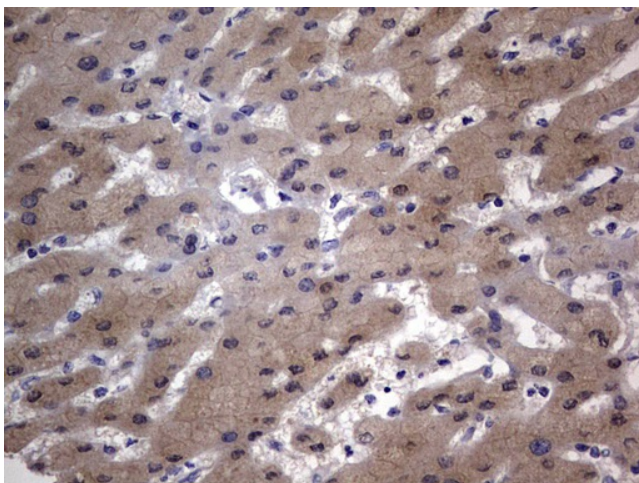
Immunohistochemical staining of paraffin-embedded Adenocarcinoma of Human colon tissue using anti-IGSF11 mouse monoclonal antibody. ([TA803797]) Dilution: 1:150



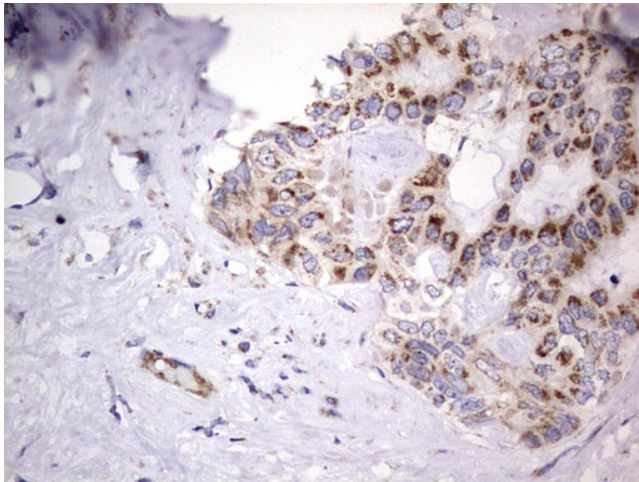
Immunohistochemical staining of paraffin-embedded Human Kidney tissue within the normal limits using anti-IGSF11 mouse monoclonal antibody. ([TA803797]) Dilution: 1:150



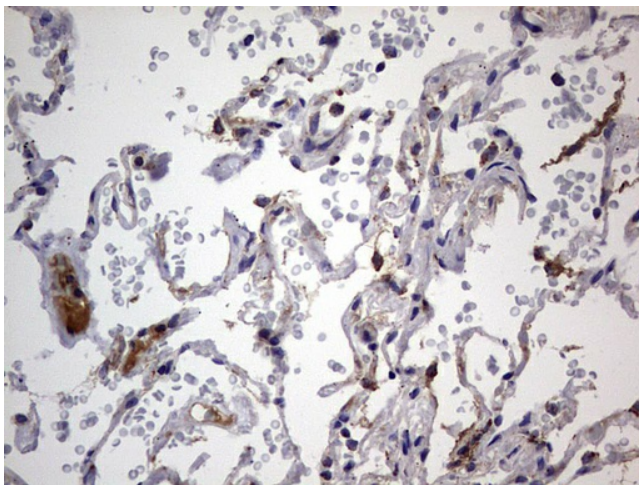
Immunohistochemical staining of paraffin-embedded Carcinoma of Human kidney tissue using anti-IGSF11 mouse monoclonal antibody. ([TA803797]) Dilution: 1:150



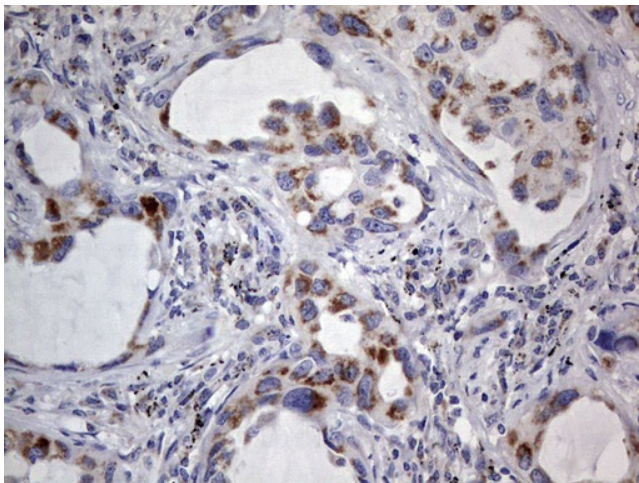
Immunohistochemical staining of paraffin-embedded Human liver tissue within the normal limits using anti-IGSF11 mouse monoclonal antibody. ([TA803797]) Dilution: 1:150



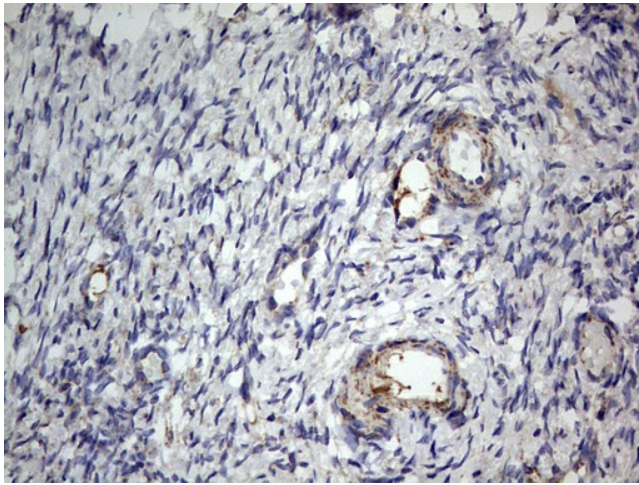
Immunohistochemical staining of paraffin-embedded Carcinoma of Human liver tissue using anti-IGSF11 mouse monoclonal antibody. ([TA803797]) Dilution: 1:150



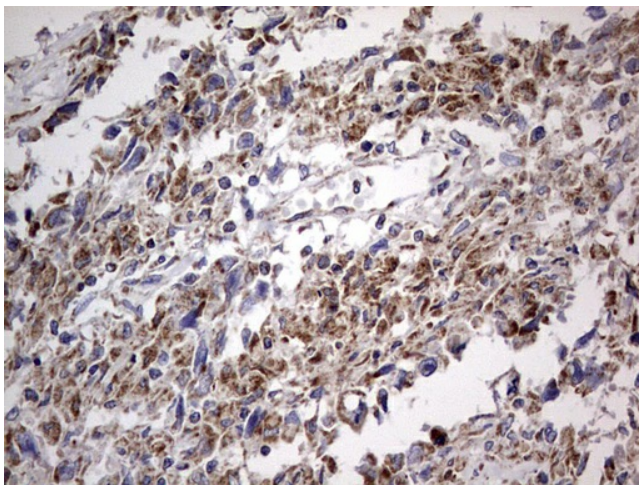
Immunohistochemical staining of paraffin-embedded Human lung tissue within the normal limits using anti-IGSF11 mouse monoclonal antibody. ([TA803797]) Dilution: 1:150



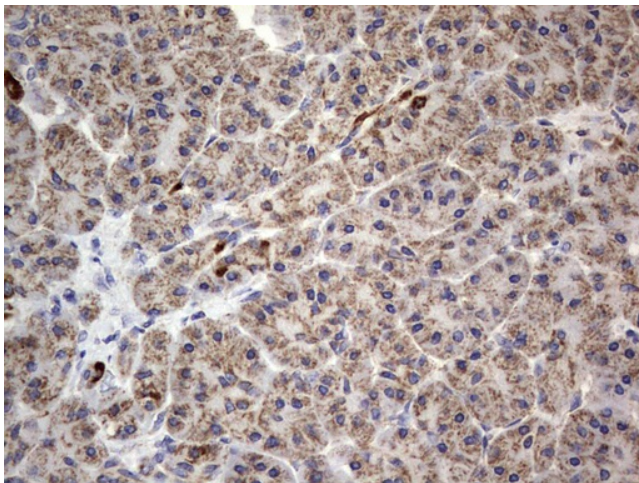
Immunohistochemical staining of paraffin-embedded Carcinoma of Human lung tissue using anti-IGSF11 mouse monoclonal antibody. ([TA803797]) Dilution: 1:150



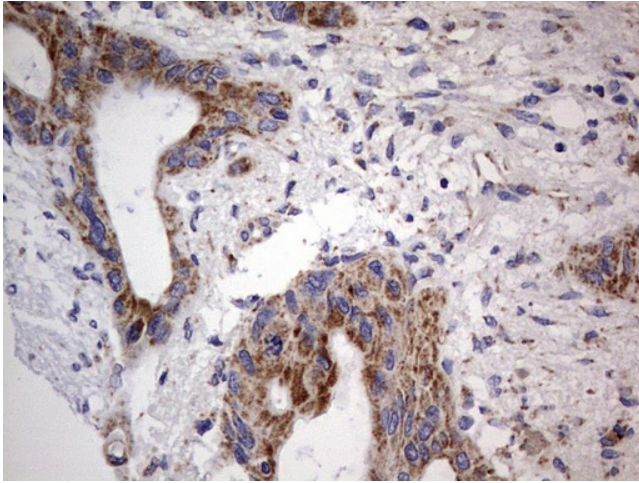
Immunohistochemical staining of paraffin-embedded Human Ovary tissue within the normal limits using anti-IGSF11 mouse monoclonal antibody. ([TA803797]) Dilution: 1:150



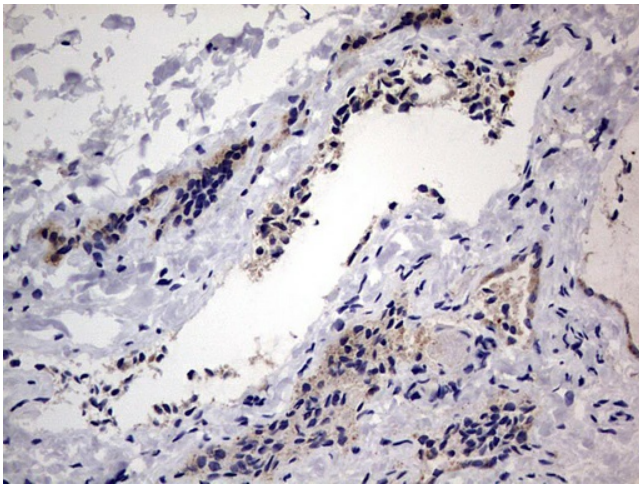
Immunohistochemical staining of paraffin-embedded Adenocarcinoma of Human ovary tissue using anti-IGSF11 mouse monoclonal antibody. ([TA803797]) Dilution: 1:150



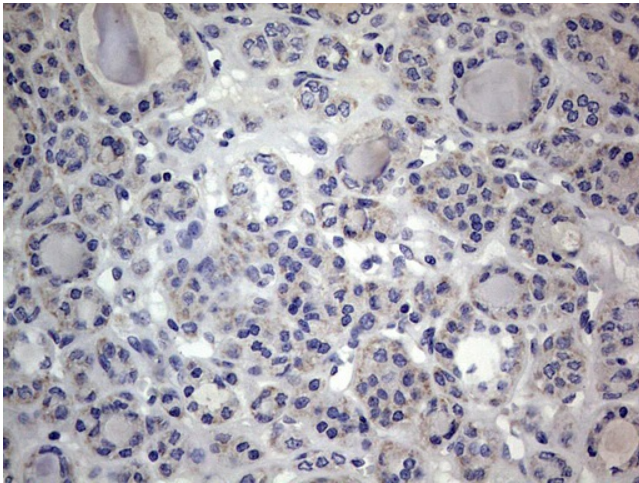
Immunohistochemical staining of paraffin-embedded Human pancreas tissue within the normal limits using anti-IGSF11 mouse monoclonal antibody. ([TA803797]) Dilution: 1:150



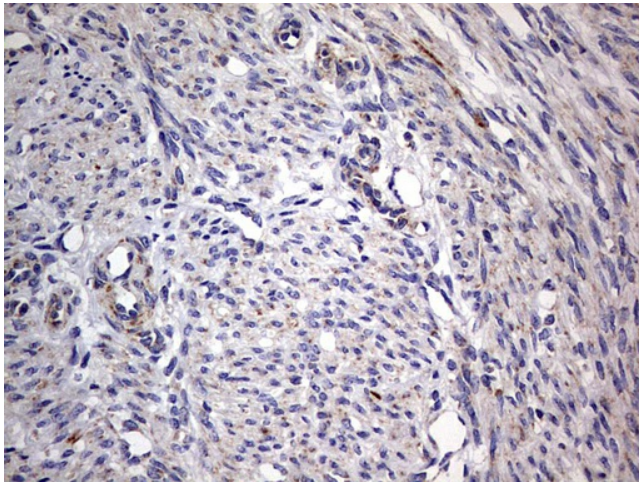
Immunohistochemical staining of paraffin-embedded Carcinoma of Human pancreas tissue using anti-IGSF11 mouse monoclonal antibody. ([TA803797]) Dilution: 1:150



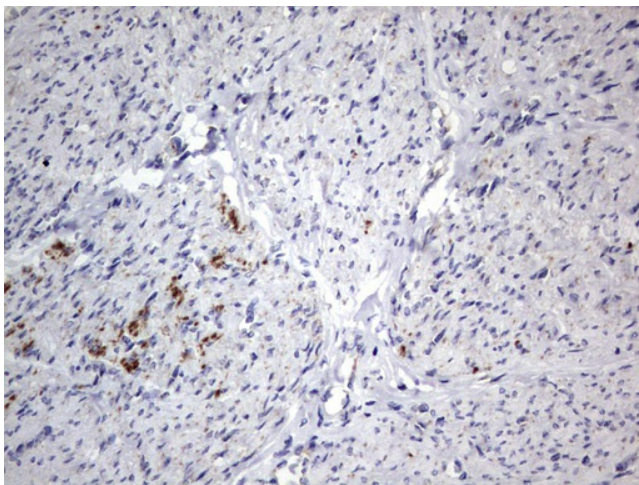
Immunohistochemical staining of paraffin-embedded Human thyroid tissue within the normal limits using anti-IGSF11 mouse monoclonal antibody. ([TA803797]) Dilution: 1:150



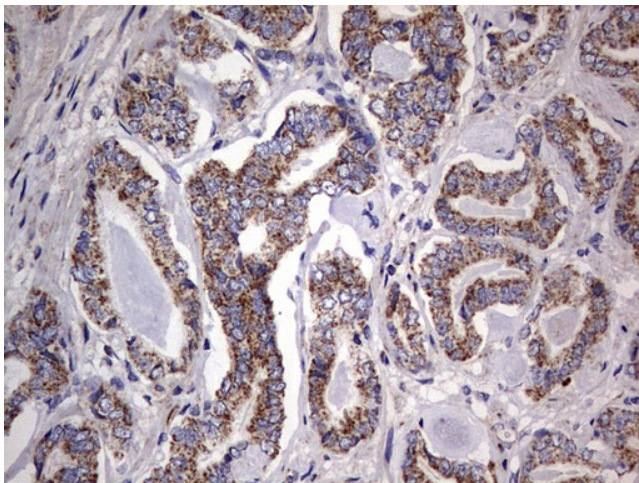
Immunohistochemical staining of paraffin-embedded Carcinoma of Human thyroid tissue using anti-IGSF11 mouse monoclonal antibody. ([TA803797]) Dilution: 1:150



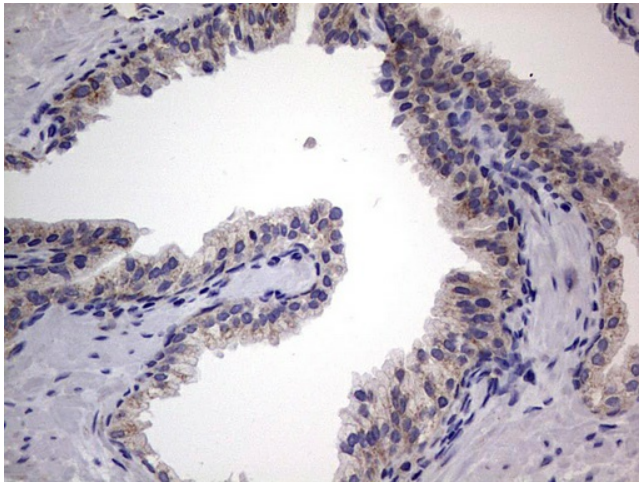
Immunohistochemical staining of paraffin-embedded Human endometrium tissue within the normal limits using anti-IGSF11 mouse monoclonal antibody. ([TA803797]) Dilution: 1:150



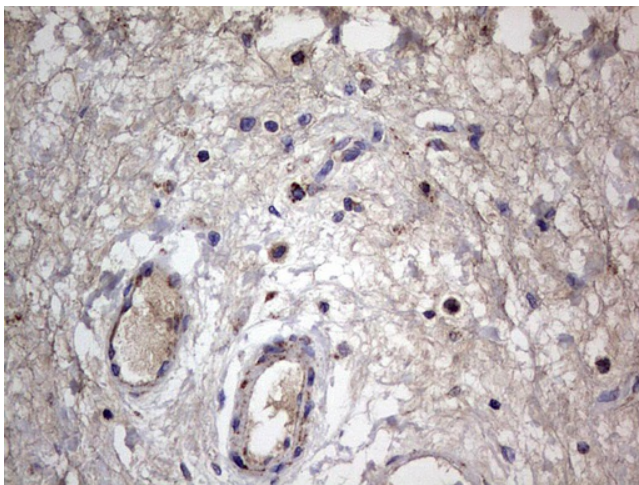
Immunohistochemical staining of paraffin-embedded Adenocarcinoma of Human endometrium tissue using anti-IGSF11 mouse monoclonal antibody. ([TA803797]) Dilution: 1:150



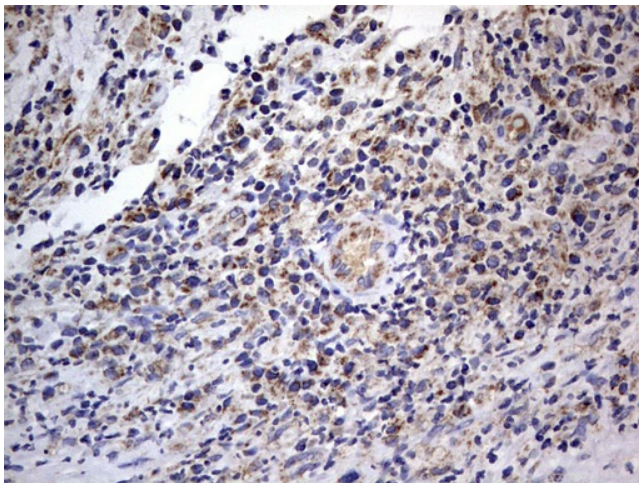
Immunohistochemical staining of paraffin-embedded Human prostate tissue within the normal limits using anti-IGSF11 mouse monoclonal antibody. ([TA803797]) Dilution: 1:150



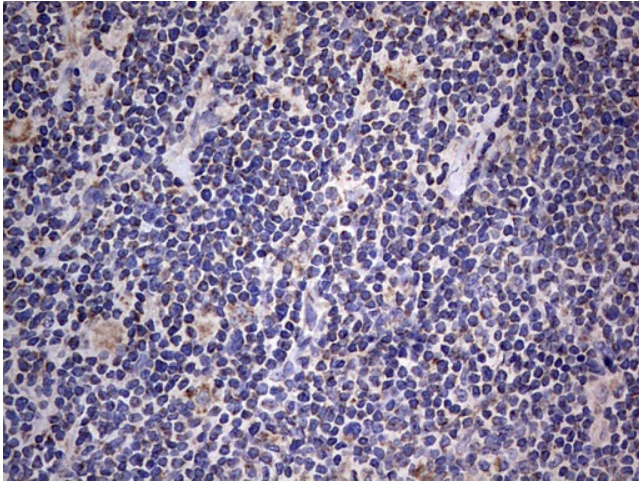
Immunohistochemical staining of paraffin-embedded Carcinoma of Human prostate tissue using anti-IGSF11 mouse monoclonal antibody. (TA803797) Dilution: 1:150



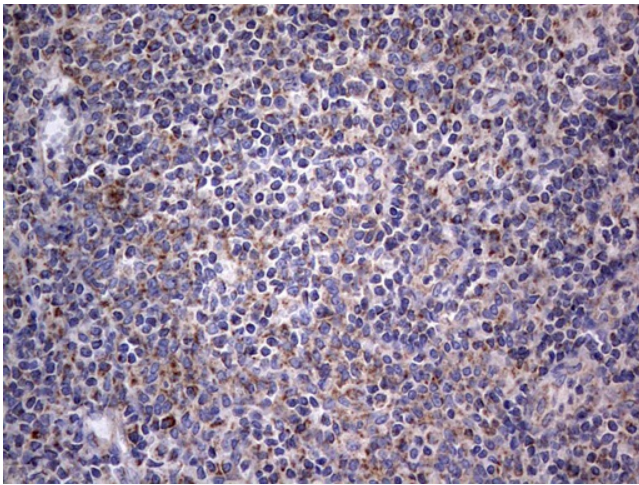
Immunohistochemical staining of paraffin-embedded Human bladder tissue within the normal limits using anti-IGSF11 mouse monoclonal antibody. (TA803797) Dilution: 1:150



Immunohistochemical staining of paraffin-embedded Human lymph node tissue within the normal limits using anti-IGSF11 mouse monoclonal antibody. (TA803797) Dilution: 1:150



Immunohistochemical staining of paraffin-embedded Human lymphoma tissue using anti-IGSF11 mouse monoclonal antibody. ([TA803797]) Dilution: 1:150



Immunohistochemical staining of paraffin-embedded Human tonsil within the normal limits using anti-IGSF11 mouse monoclonal antibody. ([TA803797]) Dilution: 1:150