

## Product datasheet for **CF803682**

### APC Mouse Monoclonal Antibody [Clone ID: OTI1B12]

#### Product data:

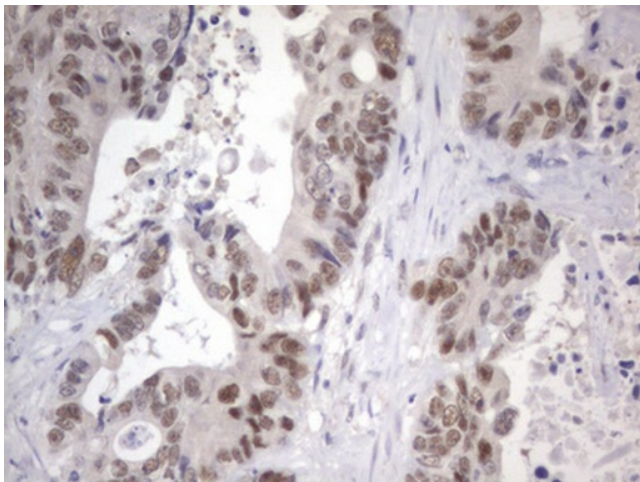
Product Type:	Primary Antibodies
Clone Name:	OTI1B12
Applications:	IHC
Recommended Dilution:	IHC 1:150
Reactivity:	Human, Mouse, Rat
Host:	Mouse
Isotype:	IgG1
Clonality:	Monoclonal
Immunogen:	Human recombinant protein fragment corresponding to amino acids 955-1382 of human APC (NP_001120983) produced in E.coli.
Formulation:	Lyophilized powder (original buffer 1X PBS, pH 7.3, 8% trehalose)
Reconstitution Method:	For reconstitution, we recommend adding 100uL distilled water to a final antibody concentration of about 1 mg/mL. To use this carrier-free antibody for conjugation experiment, we strongly recommend performing another round of desalting process. (OriGene recommends Zeba Spin Desalting Columns, 7KMWCO from Thermo Scientific)
Purification:	Purified from mouse ascites fluids or tissue culture supernatant by affinity chromatography (protein A/G)
Conjugation:	Unconjugated
Storage:	Store at -20°C as received.
Stability:	Stable for 12 months from date of receipt.
Predicted Protein Size:	311.5 kDa
Gene Name:	APC regulator of WNT signaling pathway
Database Link:	<a href="#">NP_001120983</a> <a href="#">Entrez Gene 11789 Mouse</a> <a href="#">Entrez Gene 24205 Rat</a> <a href="#">Entrez Gene 324 Human</a> <a href="#">P25054</a>
Synonyms:	BTPS2; DP2; DP2.5; DP3; GS; PPP1R46
Protein Families:	Druggable Genome



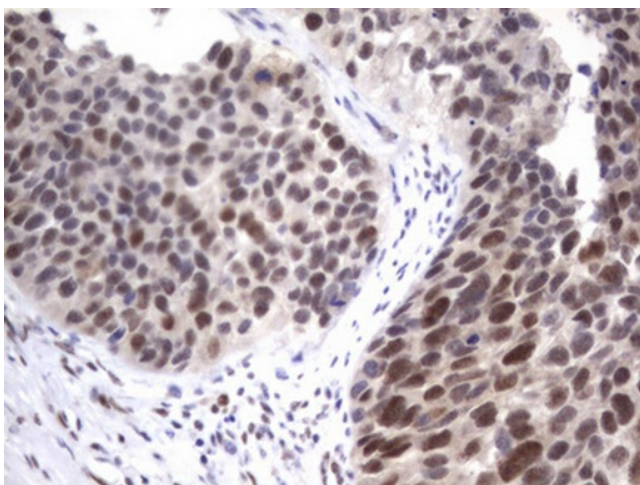
[View online »](#)

**Protein Pathways:** Basal cell carcinoma, Colorectal cancer, Endometrial cancer, Pathways in cancer, Regulation of actin cytoskeleton, Wnt signaling pathway

**Product images:**



Immunohistochemical staining of paraffin-embedded Adenocarcinoma of Human colon tissue using anti-APC mouse monoclonal antibody. (Heat-induced epitope retrieval by 1mM EDTA in 10mM Tris, pH8.5, 120°C for 3min, [TA803682])



Immunohistochemical staining of paraffin-embedded Carcinoma of Human kidney tissue using anti-APC mouse monoclonal antibody. (Heat-induced epitope retrieval by 1mM EDTA in 10mM Tris, pH8.5, 120°C for 3min, [TA803682])