

## Product datasheet for **CF803655**

### APC Mouse Monoclonal Antibody [Clone ID: OTI2B8]

#### Product data:

Product Type:	Primary Antibodies
Clone Name:	OTI2B8
Applications:	IHC, WB
Recommended Dilution:	WB 1:2000, IHC 1:150
Reactivity:	Human, Mouse, Rat
Host:	Mouse
Isotype:	IgG1
Clonality:	Monoclonal
Immunogen:	Human recombinant protein fragment corresponding to amino acids 955-1382 of human APC (NP_001120983) produced in E.coli.
Formulation:	Lyophilized powder (original buffer 1X PBS, pH 7.3, 8% trehalose)
Reconstitution Method:	For reconstitution, we recommend adding 100uL distilled water to a final antibody concentration of about 1 mg/mL. To use this carrier-free antibody for conjugation experiment, we strongly recommend performing another round of desalting process. (OriGene recommends Zeba Spin Desalting Columns, 7KMWCO from Thermo Scientific)
Purification:	Purified from mouse ascites fluids or tissue culture supernatant by affinity chromatography (protein A/G)
Conjugation:	Unconjugated
Storage:	Store at -20°C as received.
Stability:	Stable for 12 months from date of receipt.
Predicted Protein Size:	311.5 kDa
Gene Name:	APC regulator of WNT signaling pathway
Database Link:	<a href="#">NP_001120983</a> <a href="#">Entrez Gene 11789 Mouse</a> <a href="#">Entrez Gene 24205 Rat</a> <a href="#">Entrez Gene 324 Human</a> <a href="#">P25054</a>



[View online »](#)

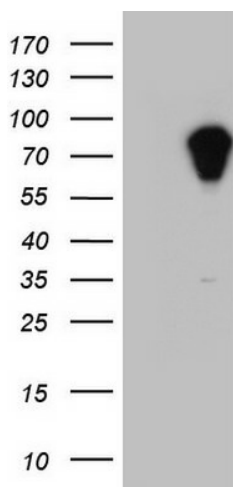
**Background:** This gene encodes a tumor suppressor protein that acts as an antagonist of the Wnt signaling pathway. It is also involved in other processes including cell migration and adhesion, transcriptional activation, and apoptosis. Defects in this gene cause familial adenomatous polyposis (FAP), an autosomal dominant pre-malignant disease that usually progresses to malignancy. Disease-associated mutations tend to be clustered in a small region designated the mutation cluster region (MCR) and result in a truncated protein product. [provided by RefSeq, Jul 2008]

**Synonyms:** BTPS2; DP2; DP2.5; DP3; GS; PPP1R46

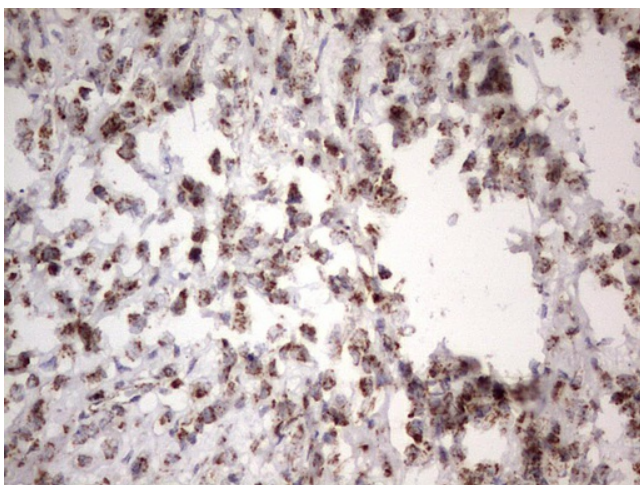
**Protein Families:** Druggable Genome

**Protein Pathways:** Basal cell carcinoma, Colorectal cancer, Endometrial cancer, Pathways in cancer, Regulation of actin cytoskeleton, Wnt signaling pathway

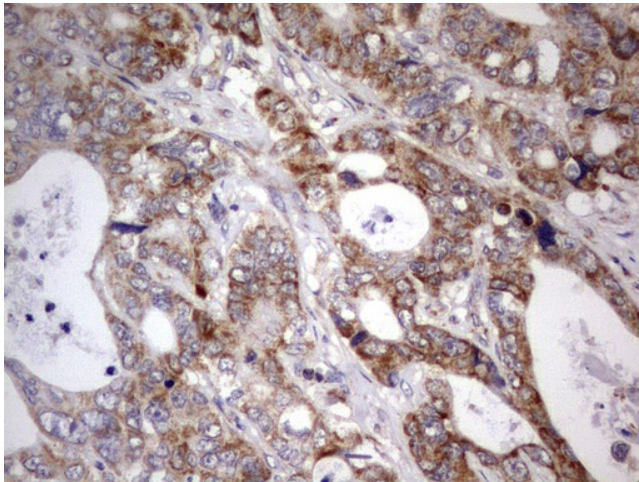
### Product images:



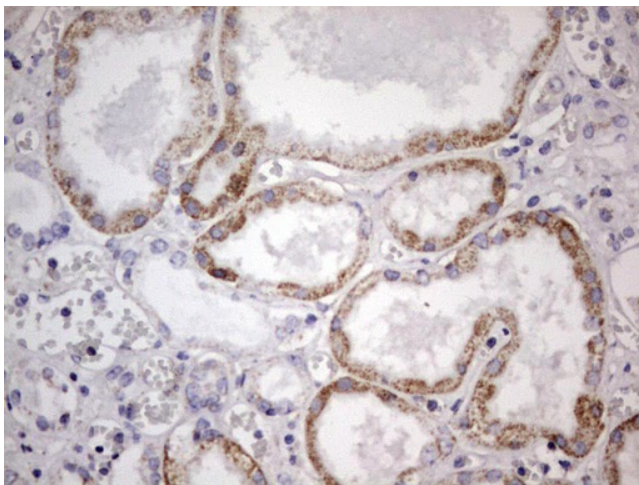
Human recombinant protein fragment corresponding to amino acids 955-1382 of human APC (NP\_001120983) produced in E.coli.



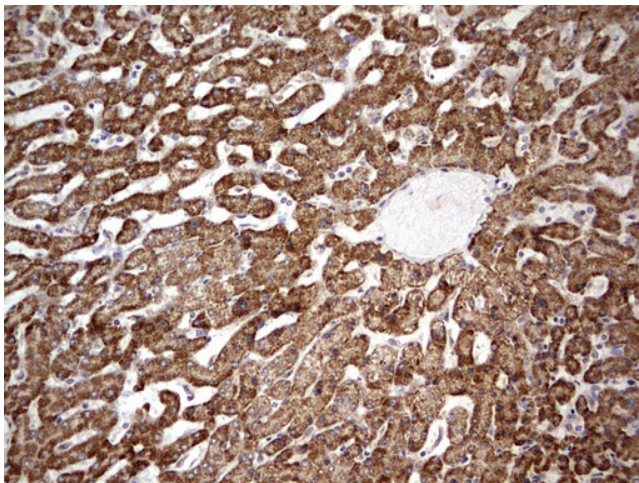
Immunohistochemical staining of paraffin-embedded Adenocarcinoma of Human breast tissue using anti-APC mouse monoclonal antibody. ([TA803655]; heat-induced epitope retrieval by 1mM EDTA in 10mM Tris, pH8.5, 120°C for 3min). Heat-induced epitope retrieval by EDTA solution buffer pH 8.0 at 120°C for 3 min.



Immunohistochemical staining of paraffin-embedded Adenocarcinoma of Human colon tissue using anti-APC mouse monoclonal antibody. ([TA803655]; heat-induced epitope retrieval by 1mM EDTA in 10mM Tris, pH8.5, 120°C for 3min). Heat-induced epitope retrieval by EDTA solution buffer pH 8.0 at 120°C for 3 min.

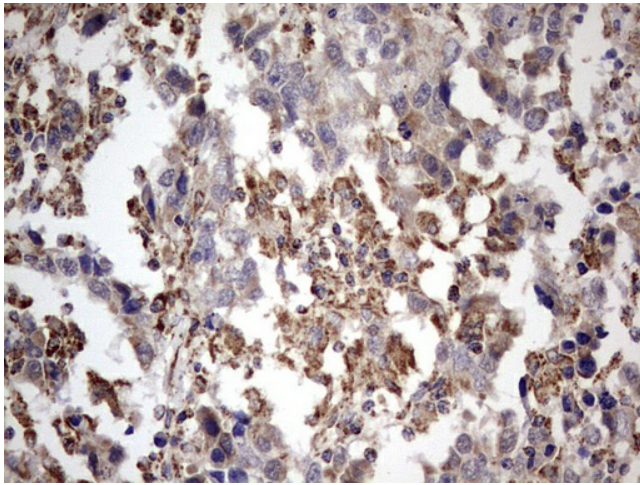


Immunohistochemical staining of paraffin-embedded Human Kidney tissue within the normal limits using anti-APC mouse monoclonal antibody. ([TA803655]; heat-induced epitope retrieval by 1mM EDTA in 10mM Tris, pH8.5, 120°C for 3min). Heat-induced epitope retrieval by EDTA solution buffer pH 8.0 at 120°C for 3 min.

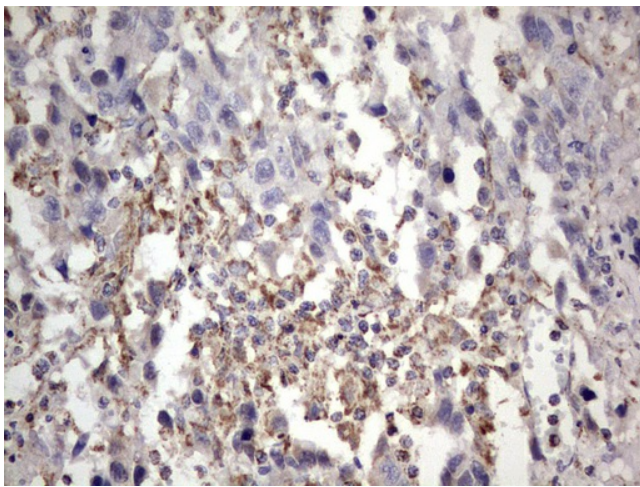


Immunohistochemical staining of paraffin-embedded Human liver tissue within the normal limits using anti-APC mouse monoclonal antibody. ([TA803655]; heat-induced epitope retrieval by 1mM EDTA in 10mM Tris, pH8.5, 120°C for 3min). Heat-induced epitope retrieval by EDTA solution buffer pH 8.0 at 120°C for 3 min.





Immunohistochemical staining of paraffin-embedded Carcinoma of Human lung tissue using anti-APC mouse monoclonal antibody. ([TA803655]; heat-induced epitope retrieval by 1mM EDTA in 10mM Tris, pH8.5, 120°C for 3min). Heat-induced epitope retrieval by EDTA solution buffer pH 8.0 at 120°C for 3 min.



Immunohistochemical staining of paraffin-embedded Adenocarcinoma of Human ovary tissue using anti-APC mouse monoclonal antibody. ([TA803655]; heat-induced epitope retrieval by 1mM EDTA in 10mM Tris, pH8.5, 120°C for 3min). Heat-induced epitope retrieval by EDTA solution buffer pH 8.0 at 120°C for 3 min.