

Product datasheet for **CF803635**

PDE1A Mouse Monoclonal Antibody [Clone ID: OTI5H4]

Product data:

Product Type:	Primary Antibodies
Clone Name:	OTI5H4
Applications:	WB
Recommended Dilution:	WB 1:2000
Reactivity:	Human, Mouse, Rat
Host:	Mouse
Isotype:	IgG2b
Clonality:	Monoclonal
Immunogen:	Human recombinant protein fragment corresponding to amino acids 259-545 of human PDE1A (NP_005010) produced in E.coli.
Formulation:	Lyophilized powder (original buffer 1X PBS, pH 7.3, 8% trehalose)
Reconstitution Method:	For reconstitution, we recommend adding 100uL distilled water to a final antibody concentration of about 1 mg/mL. To use this carrier-free antibody for conjugation experiment, we strongly recommend performing another round of desalting process. (OriGene recommends Zeba Spin Desalting Columns, 7KMWCO from Thermo Scientific)
Purification:	Purified from mouse ascites fluids or tissue culture supernatant by affinity chromatography (protein A/G)
Conjugation:	Unconjugated
Storage:	Store at -20°C as received.
Stability:	Stable for 12 months from date of receipt.
Gene Name:	Homo sapiens phosphodiesterase 1A (PDE1A), transcript variant 1, mRNA.
Database Link:	NP_005010 Entrez Gene 18573 Mouse Entrez Gene 81529 Rat Entrez Gene 5136 Human P54750



[View online »](#)

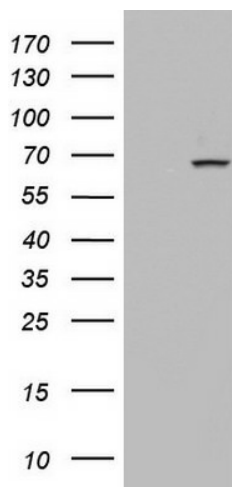
Background: Cyclic nucleotide phosphodiesterases (PDEs) play a role in signal transduction by regulating intracellular cyclic nucleotide concentrations through hydrolysis of cAMP and/or cGMP to their respective nucleoside 5-prime monophosphates. Members of the PDE1 family, such as PDE1A, are Ca(2+)/calmodulin (see CALM1; MIM 114180)-dependent PDEs (CaM-PDEs) that are activated by calmodulin in the presence of Ca(2+) (Michibata et al., 2001 [PubMed 11342109]; Fidock et al., 2002 [PubMed 11747989]). [supplied by OMIM, Oct 2009]

Synonyms: CAM-PDE-1A; HCAM-1; HCAM1; HSPDE1A

Protein Families: Druggable Genome

Protein Pathways: Calcium signaling pathway, Progesterone-mediated oocyte maturation, Purine metabolism, Taste transduction

Product images:



HEK293T cells were transfected with the pCMV6-ENTRY control (Left lane) or pCMV6-ENTRY PDE1A ([RC205292], Right lane) cDNA for 48 hrs and lysed. Equivalent amounts of cell lysates (5 ug per lane) were separated by SDS-PAGE and immunoblotted with anti-PDE1A. Positive lysates [LY401556] (100ug) and [LC401556] (20ug) can be purchased separately from OriGene.