

## Product datasheet for **CF803601**

### GLI1 Mouse Monoclonal Antibody [Clone ID: OTI2B9]

#### Product data:

|                         |  |
|-------------------------|--|
| Product Type:           | Primary Antibodies   |
| Clone Name:             | OTI2B9   |
| Applications:           | WB   |
| Recommended Dilution:   | WB 1:2000  |
| Reactivity:             | Human, Mouse, Rat  |
| Host:                   | Mouse  |
| Isotype:                | IgG2a  |
| Clonality:              | Monoclonal   |
| Immunogen:              | Human recombinant protein fragment corresponding to amino acids 1-410 of human GLI1 (NP_005260) produced in E.coli.  |
| Formulation:            | Lyophilized powder (original buffer 1X PBS, pH 7.3, 8% trehalose)  |
| Reconstitution Method:  | For reconstitution, we recommend adding 100uL distilled water to a final antibody concentration of about 1 mg/mL. To use this carrier-free antibody for conjugation experiment, we strongly recommend performing another round of desalting process. (OriGene recommends Zeba Spin Desalting Columns, 7KMWCO from Thermo Scientific) |
| Purification:           | Purified from mouse ascites fluids or tissue culture supernatant by affinity chromatography (protein A/G)  |
| Conjugation:            | Unconjugated   |
| Storage:                | Store at -20°C as received.  |
| Stability:              | Stable for 12 months from date of receipt.   |
| Predicted Protein Size: | 117.7 kDa  |
| Gene Name:              | GLI family zinc finger 1   |
| Database Link:          | <a href="#">NP_005260</a><br><a href="#">Entrez Gene 14632 Mouse</a> <a href="#">Entrez Gene 2735 Human</a><br><a href="#">P08151</a>  |
| Synonyms:               | GLI  |

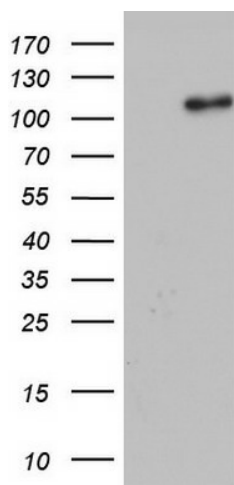


[View online »](#)

**Protein Families:** Adult stem cells, Cancer stem cells, Druggable Genome, Embryonic stem cells, ES Cell Differentiation/IPS, Stem cell relevant signaling - DSL/Notch pathway, Transcription Factors

**Protein Pathways:** Basal cell carcinoma, Hedgehog signaling pathway, Pathways in cancer

**Product images:**



HEK293T cells were transfected with the pCMV6-ENTRY control (Left lane) or pCMV6-ENTRY GLI1 ([RC201110], Right lane) cDNA for 48 hrs and lysed. Equivalent amounts of cell lysates (5 ug per lane) were separated by SDS-PAGE and immunoblotted with anti-GLI1. Positive lysates [LY417412] (100ug) and [LC417412] (20ug) can be purchased separately from OriGene.