

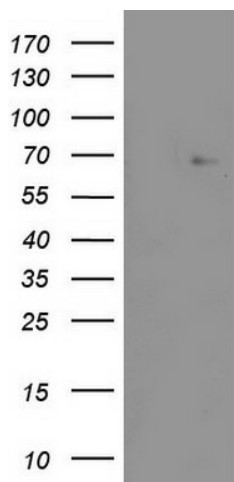
Product datasheet for **CF803480**

ZNF286 (ZNF286A) Mouse Monoclonal Antibody [Clone ID: OTI7D2]

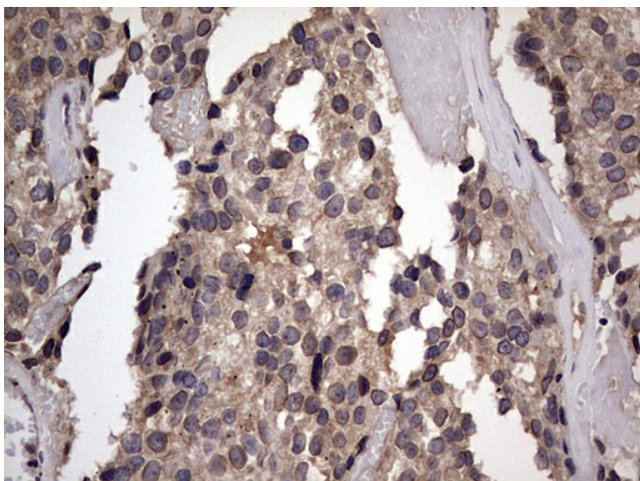
Product data:

Product Type:	Primary Antibodies
Clone Name:	OTI7D2
Applications:	IHC, WB
Recommended Dilution:	WB 1:2000
Reactivity:	Human
Host:	Mouse
Isotype:	IgG1
Clonality:	Monoclonal
Immunogen:	Human recombinant protein fragment corresponding to amino acids 1-252 of human ZNF286A (NP_065703) produced in E.coli.
Formulation:	Lyophilized powder (original buffer 1X PBS, pH 7.3, 8% trehalose)
Reconstitution Method:	For reconstitution, we recommend adding 100uL distilled water to a final antibody concentration of about 1 mg/mL. To use this carrier-free antibody for conjugation experiment, we strongly recommend performing another round of desalting process. (OriGene recommends Zeba Spin Desalting Columns, 7KMWCO from Thermo Scientific)
Purification:	Purified from mouse ascites fluids or tissue culture supernatant by affinity chromatography (protein A/G)
Conjugation:	Unconjugated
Storage:	Store at -20°C as received.
Stability:	Stable for 12 months from date of receipt.
Gene Name:	zinc finger protein 286A
Database Link:	NP_065703 Entrez Gene 57335 Human Q9HBT8
Synonyms:	ZNF286
Protein Families:	Transcription Factors

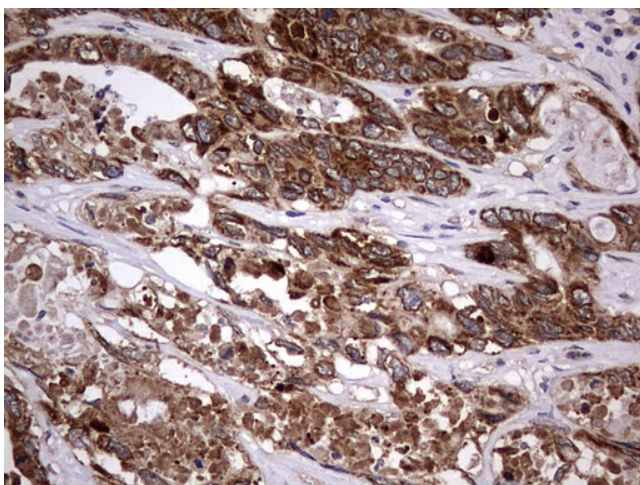
[View online »](#)

Product images:


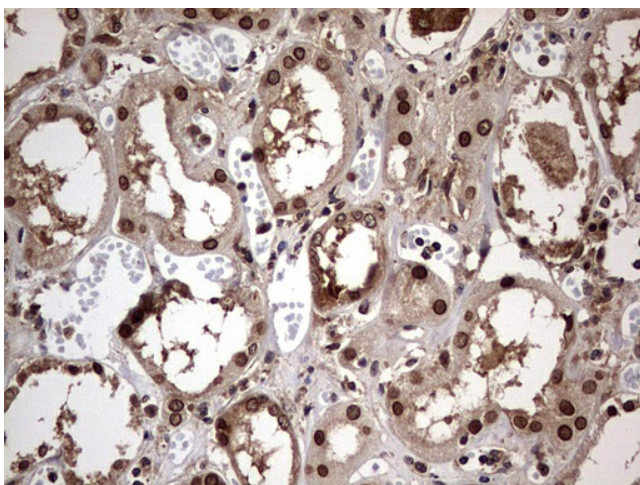
HEK293T cells were transfected with the pCMV6-ENTRY control (Cat# [PS100001], Left lane) or pCMV6-ENTRY ZNF286A (Cat# [RC216382], Right lane) cDNA for 48 hrs and lysed. Equivalent amounts of cell lysates (5 ug per lane) were separated by SDS-PAGE and immunoblotted with anti-ZNF286A (Cat# [TA803480]). Positive lysates [LY412314] (100ug) and [LC412314] (20ug) can be purchased separately from OriGene.



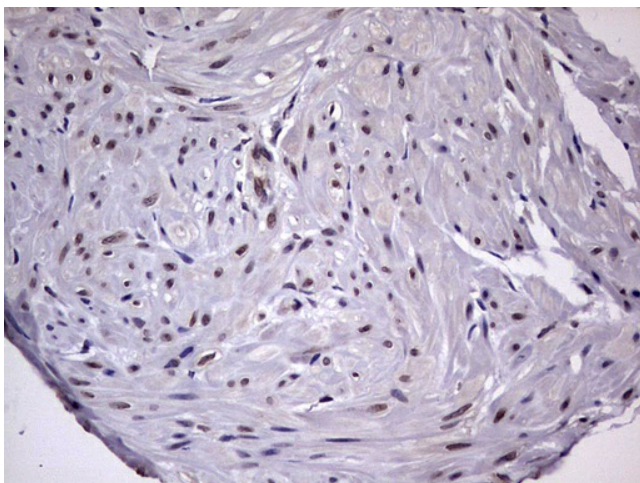
Immunohistochemical staining of paraffin-embedded Adenocarcinoma of Human breast tissue using anti-ZNF286A mouse monoclonal antibody. ([TA803480]) Dilution: 1:150. Heat-induced epitope retrieval by EDTA solution buffer pH 8.0 at 120°C for 3 min.



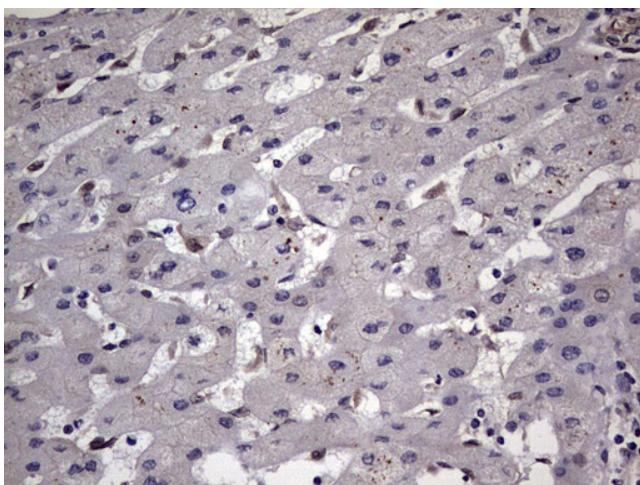
Immunohistochemical staining of paraffin-embedded Adenocarcinoma of Human colon tissue using anti-ZNF286A mouse monoclonal antibody. ([TA803480]) Dilution: 1:150. Heat-induced epitope retrieval by EDTA solution buffer pH 8.0 at 120°C for 3 min.



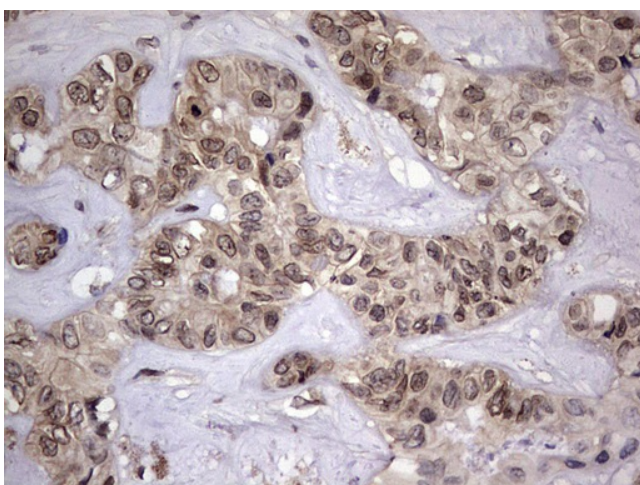
Immunohistochemical staining of paraffin-embedded Human Kidney tissue within the normal limits using anti-ZNF286A mouse monoclonal antibody. ([TA803480]) Dilution: 1:150. Heat-induced epitope retrieval by EDTA solution buffer pH 8.0 at 120°C for 3 min.



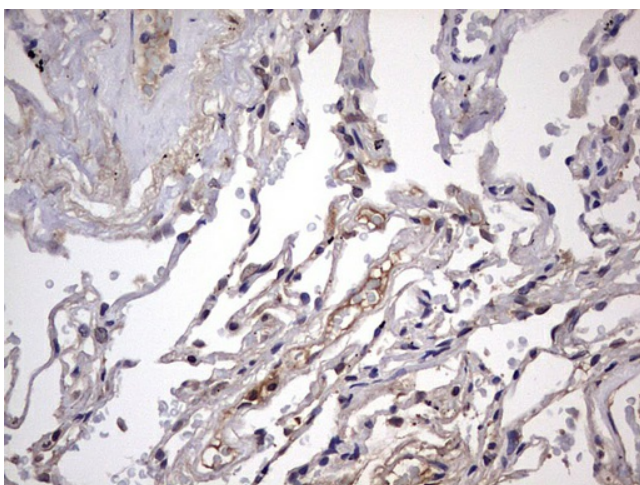
Immunohistochemical staining of paraffin-embedded Carcinoma of Human kidney tissue using anti-ZNF286A mouse monoclonal antibody. ([TA803480]) Dilution: 1:150. Heat-induced epitope retrieval by EDTA solution buffer pH 8.0 at 120°C for 3 min.



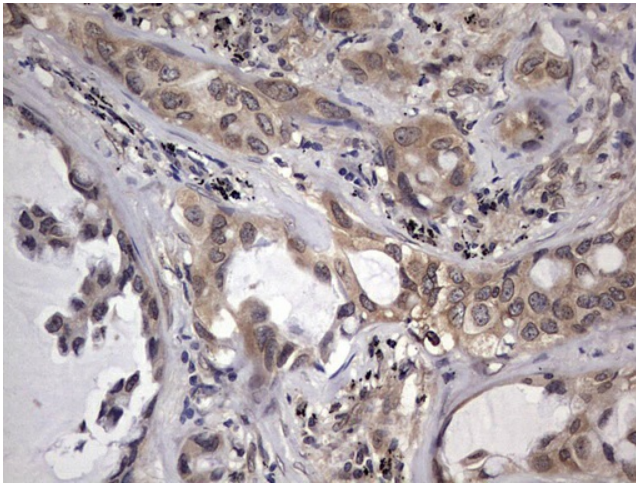
Immunohistochemical staining of paraffin-embedded Human liver tissue within the normal limits using anti-ZNF286A mouse monoclonal antibody. ([TA803480]) Dilution: 1:150. Heat-induced epitope retrieval by EDTA solution buffer pH 8.0 at 120°C for 3 min.



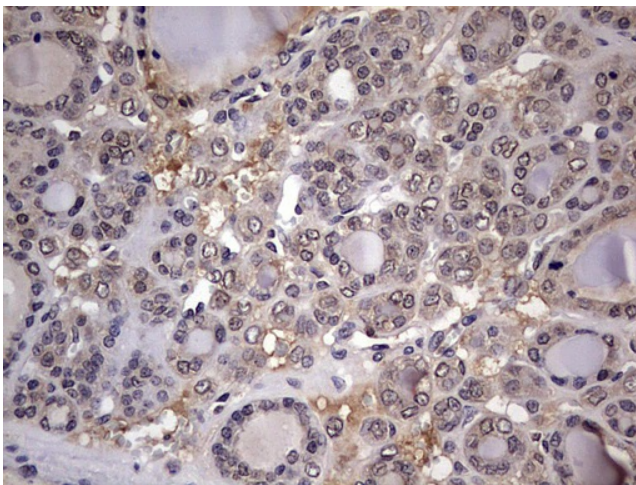
Immunohistochemical staining of paraffin-embedded Carcinoma of Human liver tissue using anti-ZNF286A mouse monoclonal antibody. ([TA803480]) Dilution: 1:150. Heat-induced epitope retrieval by EDTA solution buffer pH 8.0 at 120°C for 3 min.



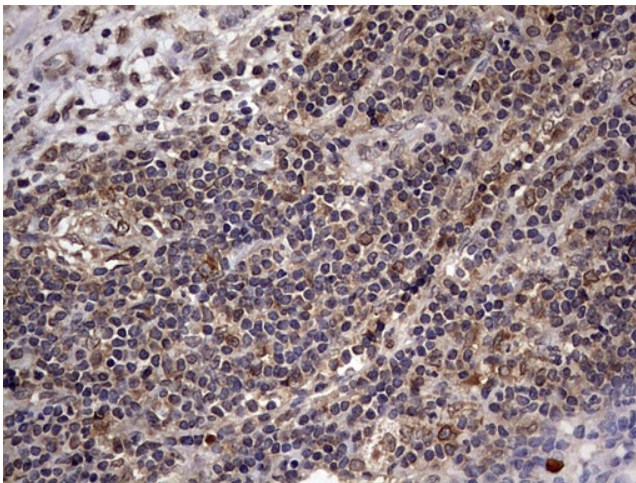
Immunohistochemical staining of paraffin-embedded Human lung tissue within the normal limits using anti-ZNF286A mouse monoclonal antibody. ([TA803480]) Dilution: 1:150. Heat-induced epitope retrieval by EDTA solution buffer pH 8.0 at 120°C for 3 min.



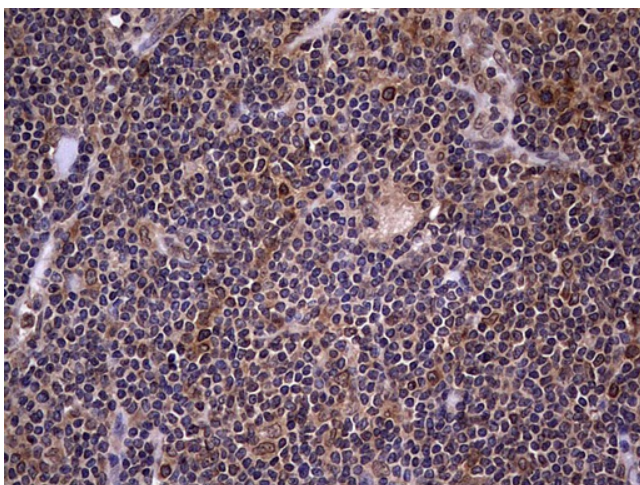
Immunohistochemical staining of paraffin-embedded Carcinoma of Human lung tissue using anti-ZNF286A mouse monoclonal antibody. ([TA803480]) Dilution: 1:150. Heat-induced epitope retrieval by EDTA solution buffer pH 8.0 at 120°C for 3 min.



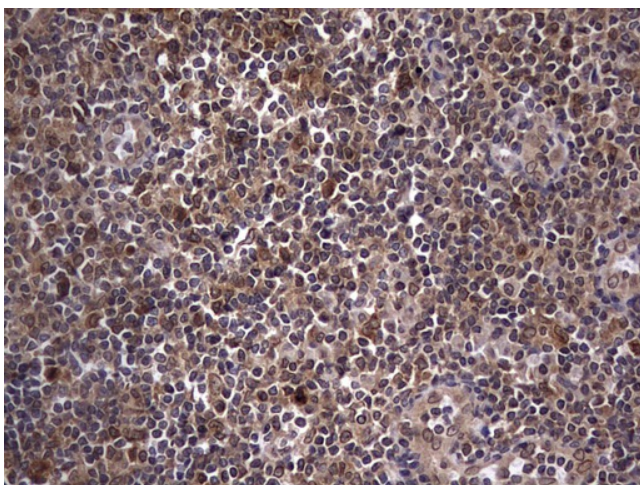
Immunohistochemical staining of paraffin-embedded Carcinoma of Human thyroid tissue using anti-ZNF286A mouse monoclonal antibody. ([TA803480]) Dilution: 1:150. Heat-induced epitope retrieval by EDTA solution buffer pH 8.0 at 120°C for 3 min.



Immunohistochemical staining of paraffin-embedded Human lymph node tissue within the normal limits using anti-ZNF286A mouse monoclonal antibody. ([TA803480]) Dilution: 1:150. Heat-induced epitope retrieval by EDTA solution buffer pH 8.0 at 120°C for 3 min.



Immunohistochemical staining of paraffin-embedded Human lymphoma tissue using anti-ZNF286A mouse monoclonal antibody. ([TA803480]) Dilution: 1:150. Heat-induced epitope retrieval by EDTA solution buffer pH 8.0 at 120°C for 3 min.



Immunohistochemical staining of paraffin-embedded Human tonsil within the normal limits using anti-ZNF286A mouse monoclonal antibody. ([TA803480]) Dilution: 1:150. Heat-induced epitope retrieval by EDTA solution buffer pH 8.0 at 120°C for 3 min.