

Product datasheet for **CF803267**

Cytokeratin 14 (KRT14) Mouse Monoclonal Antibody [Clone ID: OTI4A7]

Product data:

Product Type:	Primary Antibodies
Clone Name:	OTI4A7
Applications:	IHC, WB
Recommended Dilution:	WB 1:2000
Reactivity:	Human, Mouse, Rat
Host:	Mouse
Isotype:	IgG2a
Clonality:	Monoclonal
Immunogen:	Human recombinant protein fragment corresponding to amino acids 261-472 of human KRT14 (NP_000517) produced in E.coli.
Formulation:	Lyophilized powder (original buffer 1X PBS, pH 7.3, 8% trehalose)
Reconstitution Method:	For reconstitution, we recommend adding 100uL distilled water to a final antibody concentration of about 1 mg/mL. To use this carrier-free antibody for conjugation experiment, we strongly recommend performing another round of desalting process. (OriGene recommends Zeba Spin Desalting Columns, 7KMWCO from Thermo Scientific)
Purification:	Purified from mouse ascites fluids or tissue culture supernatant by affinity chromatography (protein A/G)
Conjugation:	Unconjugated
Storage:	Store at -20°C as received.
Stability:	Stable for 12 months from date of receipt.
Predicted Protein Size:	51.4 kDa
Gene Name:	keratin 14
Database Link:	NP_000517 Entrez Gene 16664 Mouse Entrez Gene 287701 Rat Entrez Gene 3861 Human P02533



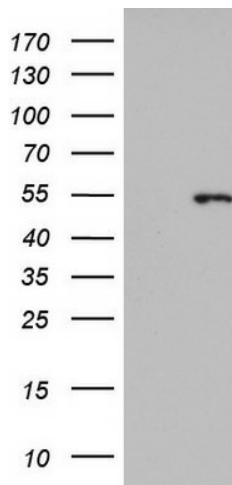
[View online »](#)

Background:

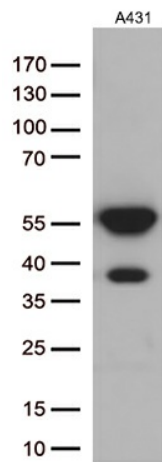
This gene encodes a member of the keratin family, the most diverse group of intermediate filaments. This gene product, a type I keratin, is usually found as a heterotetramer with two keratin 5 molecules, a type II keratin. Together they form the cytoskeleton of epithelial cells. Mutations in the genes for these keratins are associated with epidermolysis bullosa simplex. At least one pseudogene has been identified at 17p12-p11. [provided by RefSeq, Jul 2008]

Synonyms:

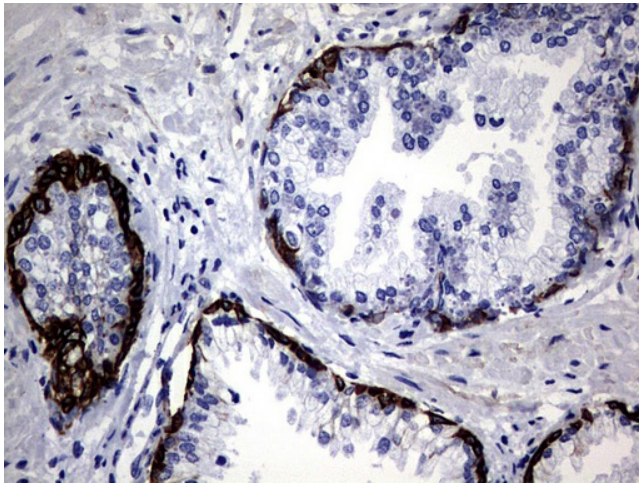
CK14; EBS3; EBS4; K14; NFJ

Product images:


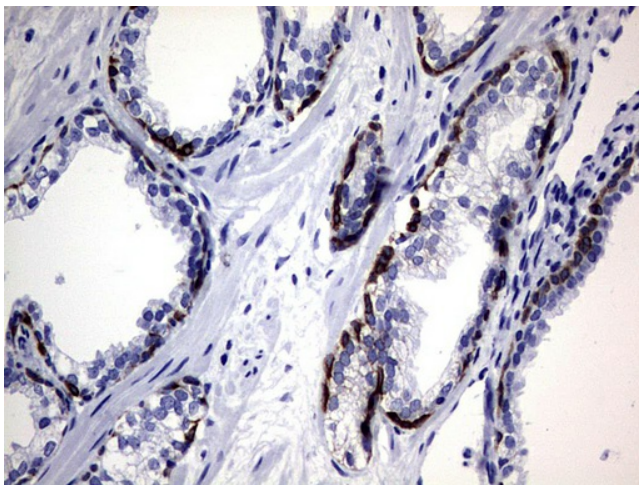
HEK293T cells were transfected with the pCMV6-ENTRY control (Left lane) or pCMV6-ENTRY KRT14 ([RC214907], Right lane) cDNA for 48 hrs and lysed. Equivalent amounts of cell lysates (5 ug per lane) were separated by SDS-PAGE and immunoblotted with anti-KRT14.



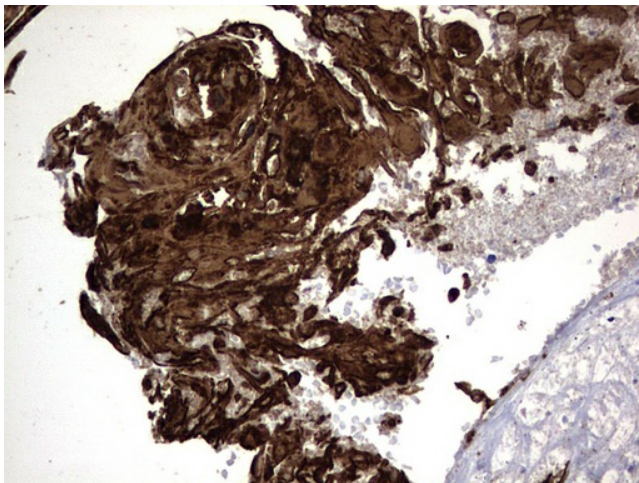
Western blot analysis of extracts (35ug) from A431 cells by using anti-KRT14 monoclonal antibody (1:500).



Immunohistochemical staining of paraffin-embedded Human prostate tissue within the normal limits using anti-KRT14 mouse monoclonal antibody. ([TA803267]) Dilution: 1:150



Immunohistochemical staining of paraffin-embedded Carcinoma of Human prostate tissue using anti-KRT14 mouse monoclonal antibody. ([TA803267]) Dilution: 1:150



Immunohistochemical staining of paraffin-embedded Carcinoma of Human bladder tissue using anti-KRT14 mouse monoclonal antibody. ([TA803267]) Dilution: 1:150