

Product datasheet for **CF803261**

Von Willebrand Factor (VWF) Mouse Monoclonal Antibody [Clone ID: OT11H2]

Product data:

| | |
|-------------------------|--------------------------------------------------------------------------------------------------------------------------------------------------------------------------------------------------------------------------------------------------------------------------------------------------------------------------------------|
| Product Type: | Primary Antibodies |
| Clone Name: | OT11H2 |
| Applications: | WB |
| Recommended Dilution: | WB 1:2000 |
| Reactivity: | Human |
| Host: | Mouse |
| Isotype: | IgG2a |
| Clonality: | Monoclonal |
| Immunogen: | Human recombinant protein fragment corresponding to amino acids 764-1263 of human VWF (NP_000543) produced in SF9 cell. |
| Formulation: | Lyophilized powder (original buffer 1X PBS, pH 7.3, 8% trehalose) |
| Reconstitution Method: | For reconstitution, we recommend adding 100uL distilled water to a final antibody concentration of about 1 mg/mL. To use this carrier-free antibody for conjugation experiment, we strongly recommend performing another round of desalting process. (OriGene recommends Zeba Spin Desalting Columns, 7KMWCO from Thermo Scientific) |
| Purification: | Purified from mouse ascites fluids or tissue culture supernatant by affinity chromatography (protein A/G) |
| Conjugation: | Unconjugated |
| Storage: | Store at -20°C as received. |
| Stability: | Stable for 12 months from date of receipt. |
| Predicted Protein Size: | 309.3 kDa |
| Gene Name: | von Willebrand factor |
| Database Link: | NP_000543 Entrez Gene 7450 Human P04275 |



[View online »](#)

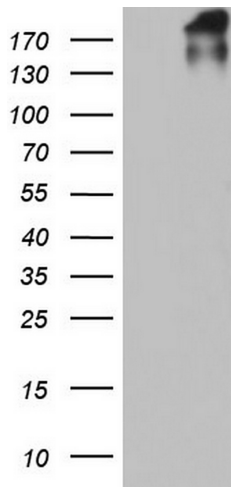
Background: The glycoprotein encoded by this gene functions as both an antihemophilic factor carrier and a platelet-vessel wall mediator in the blood coagulation system. It is crucial to the hemostasis process. Mutations in this gene or deficiencies in this protein result in von Willebrand's disease. An unprocessed pseudogene has been found on chromosome 22. [provided by RefSeq, Jul 2008]

Synonyms: F8VWF; VWD

Protein Families: Druggable Genome, Secreted Protein

Protein Pathways: Complement and coagulation cascades, ECM-receptor interaction, Focal adhesion

Product images:



HEK293T cells were transfected with the pCMV6-ENTRY control (Left lane) or pCMV6-ENTRY VWF ([RC218497], Right lane) cDNA for 48 hrs and lysed. Equivalent amounts of cell lysates (5 ug per lane) were separated by SDS-PAGE and immunoblotted with anti-VWF. Positive lysates [LY424643] (100ug) and [LC424643] (20ug) can be purchased separately from OriGene.