

## Product datasheet for **CF803241**

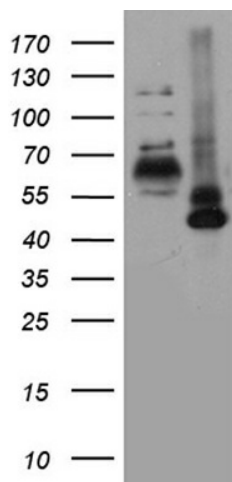
### ROR alpha (RORA) Mouse Monoclonal Antibody [Clone ID: OTI5A6]

#### Product data:

Product Type:	Primary Antibodies
Clone Name:	OTI5A6
Applications:	WB
Recommended Dilution:	WB 1:2000
Reactivity:	Human, Mouse, Rat
Host:	Mouse
Isotype:	IgG2b
Clonality:	Monoclonal
Immunogen:	Human recombinant protein fragment corresponding to amino acids 98-345 of human RORA (NP_002934) produced in E.coli.
Formulation:	Lyophilized powder (original buffer 1X PBS, pH 7.3, 8% trehalose)
Reconstitution Method:	For reconstitution, we recommend adding 100uL distilled water to a final antibody concentration of about 1 mg/mL. To use this carrier-free antibody for conjugation experiment, we strongly recommend performing another round of desalting process. (OriGene recommends Zeba Spin Desalting Columns, 7KMWCO from Thermo Scientific)
Purification:	Purified from mouse ascites fluids or tissue culture supernatant by affinity chromatography (protein A/G)
Conjugation:	Unconjugated
Storage:	Store at -20°C as received.
Stability:	Stable for 12 months from date of receipt.
Predicted Protein Size:	62.1 kDa
Gene Name:	RAR related orphan receptor A
Database Link:	<a href="#">NP_002934</a> <a href="#">Entrez Gene 19883 Mouse</a> <a href="#">Entrez Gene 300807 Rat</a> <a href="#">Entrez Gene 6095 Human</a> <a href="#">P35398</a>
Synonyms:	NR1F1; ROR1; ROR2; ROR3; RZR-ALPHA; RZRA
Protein Families:	Druggable Genome, Nuclear Hormone Receptor, Transcription Factors



[View online »](#)

**Product images:**

HEK293T cells were transfected with the pCMV6-ENTRY control (Left lane) or pCMV6-ENTRY RORA ([RC214618], Right lane) cDNA for 48 hrs and lysed. Equivalent amounts of cell lysates (5 ug per lane) were separated by SDS-PAGE and immunoblotted with anti-RORA (1:2000). Positive lysates [LY401041] (100ug) and [LC401041] (20ug) can be purchased separately from OriGene.