

Product datasheet for **CF803177**

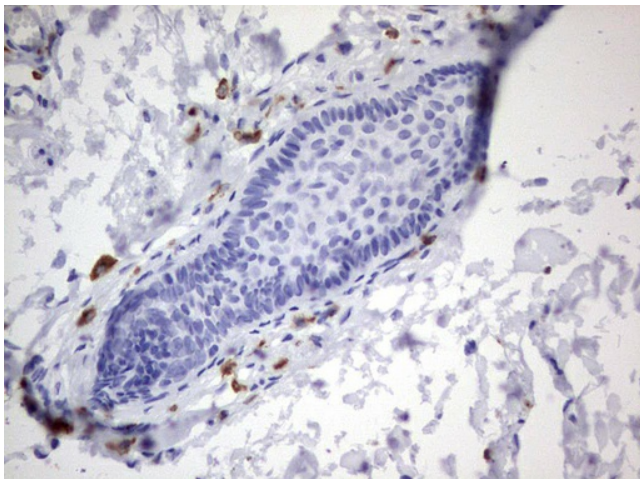
Melanoma gp100 (PMEL) Mouse Monoclonal Antibody [Clone ID: OTI4D12]

Product data:

Product Type:	Primary Antibodies
Clone Name:	OTI4D12
Applications:	IHC
Recommended Dilution:	IHC 1:150
Reactivity:	Human
Host:	Mouse
Isotype:	IgG2b
Clonality:	Monoclonal
Immunogen:	Human recombinant protein fragment corresponding to amino acids 25-467 of human PMEL (NP_008859) produced in SF9 cell.
Formulation:	Lyophilized powder (original buffer 1X PBS, pH 7.3, 8% trehalose)
Reconstitution Method:	For reconstitution, we recommend adding 100uL distilled water to a final antibody concentration of about 1 mg/mL. To use this carrier-free antibody for conjugation experiment, we strongly recommend performing another round of desalting process. (OriGene recommends Zeba Spin Desalting Columns, 7KMWCO from Thermo Scientific)
Purification:	Purified from mouse ascites fluids or tissue culture supernatant by affinity chromatography (protein A/G)
Conjugation:	Unconjugated
Storage:	Store at -20°C as received.
Stability:	Stable for 12 months from date of receipt.
Predicted Protein Size:	70.1 kDa
Gene Name:	premelanosome protein
Database Link:	NP_008859 Entrez Gene 6490 Human P40967
Synonyms:	D12S53E; gp100; ME20; ME20-M; ME20M; P1; P100; PMEL17; SI; SIL; SILV
Protein Families:	Secreted Protein, Transmembrane



[View online »](#)

Product images:

Immunohistochemical staining of paraffin-embedded Human skin tissue using anti-PMEL mouse monoclonal antibody. (Heat-induced epitope retrieval by 1mM EDTA in 10mM Tris, pH8.5, 120°C for 3min, [TA803177])