

Product datasheet for **CF803175**

Calcium independent Phospholipase A2 (PLA2G6) Mouse Monoclonal Antibody [Clone ID: OTI10G4]

Product data:

Product Type:	Primary Antibodies
Clone Name:	OTI10G4
Applications:	WB
Recommended Dilution:	WB 1:2000
Reactivity:	Human, Mouse, Rat
Host:	Mouse
Isotype:	IgG1
Clonality:	Monoclonal
Immunogen:	Human recombinant protein fragment corresponding to amino acids 490-752 of human PLA2G6 (NP_001004426) produced in E.coli.
Formulation:	Lyophilized powder (original buffer 1X PBS, pH 7.3, 8% trehalose)
Reconstitution Method:	For reconstitution, we recommend adding 100uL distilled water to a final antibody concentration of about 1 mg/mL. To use this carrier-free antibody for conjugation experiment, we strongly recommend performing another round of desalting process. (OriGene recommends Zeba Spin Desalting Columns, 7KMWCO from Thermo Scientific)
Purification:	Purified from mouse ascites fluids or tissue culture supernatant by affinity chromatography (protein A/G)
Conjugation:	Unconjugated
Storage:	Store at -20°C as received.
Stability:	Stable for 12 months from date of receipt.
Gene Name:	phospholipase A2 group VI
Database Link:	NP_001004426 Entrez Gene 53357 Mouse Entrez Gene 360426 Rat Entrez Gene 8398 Human O60733



[View online »](#)

Background:

The protein encoded by this gene is an A2 phospholipase, a class of enzyme that catalyzes the release of fatty acids from phospholipids. The encoded protein may play a role in phospholipid remodelling, arachidonic acid release, leukotriene and prostaglandin synthesis, fas-mediated apoptosis, and transmembrane ion flux in glucose-stimulated B-cells. Several transcript variants encoding multiple isoforms have been described, but the full-length nature of only three of them have been determined to date. [provided by RefSeq, Dec 2010]

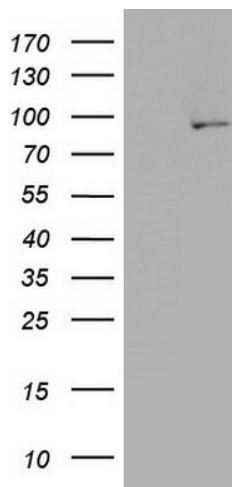
Synonyms:

Cal-PLA2; GVI; INAD1; iPLA2; IPLA2-VIA; iPLA2beta; NBIA2; NBIA2A; NBIA2B; PARK14; PLA2; PNPLA9

Protein Pathways:

alpha-Linolenic acid metabolism, Arachidonic acid metabolism, Ether lipid metabolism, Fc epsilon RI signaling pathway, Fc gamma R-mediated phagocytosis, Glycerophospholipid metabolism, GnRH signaling pathway, Linoleic acid metabolism, Long-term depression, MAPK signaling pathway, Metabolic pathways, Vascular smooth muscle contraction, VEGF signaling pathway

Product images:



HEK293T cells were transfected with the pCMV6-ENTRY control (Cat# [PS100001], Left lane) or pCMV6-ENTRY PLA2G6 (Cat# [RC208735], Right lane) cDNA for 48 hrs and lysed. Equivalent amounts of cell lysates (5 ug per lane) were separated by SDS-PAGE and immunoblotted with anti-PLA2G6(Cat# [TA803175]). Positive lysates [LY400377] (100ug) and [LC400377] (20ug) can be purchased separately from OriGene.