

Product datasheet for CF803142

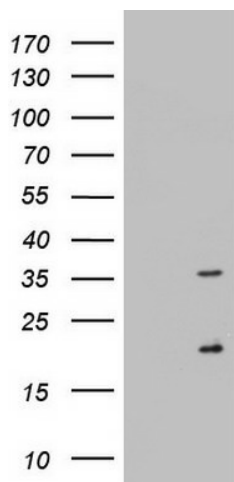
Nogo B receptor (NUS1) Mouse Monoclonal Antibody [Clone ID: OTI6C11]

Product data:

Product Type:	Primary Antibodies
Clone Name:	OTI6C11
Applications:	WB
Recommended Dilution:	WB 1:2000
Reactivity:	Human, Mouse, Rat
Host:	Mouse
Isotype:	IgG1
Clonality:	Monoclonal
Immunogen:	Human recombinant protein fragment corresponding to amino acids 38-116 of human NUS1 (NP_612468) produced in E.coli.
Formulation:	Lyophilized powder (original buffer 1X PBS, pH 7.3, 8% trehalose)
Reconstitution Method:	For reconstitution, we recommend adding 100uL distilled water to a final antibody concentration of about 1 mg/mL. To use this carrier-free antibody for conjugation experiment, we strongly recommend performing another round of desalting process. (OriGene recommends Zeba Spin Desalting Columns, 7KMWCO from Thermo Scientific)
Purification:	Purified from mouse ascites fluids or tissue culture supernatant by affinity chromatography (protein A/G)
Conjugation:	Unconjugated
Storage:	Store at -20°C as received.
Stability:	Stable for 12 months from date of receipt.
Gene Name:	Homo sapiens NUS1 dehydrodolichyl diphosphate synthase subunit (NUS1), mRNA.
Database Link:	NP_612468 Entrez Gene 52014 Mouse Entrez Gene 294400 Rat Entrez Gene 116150 Human Q96E22
Synonyms:	C6orf68; CDG1AA; MGC:7199; NgBR; TANGO14


[View online »](#)

Product images:



HEK293T cells were transfected with the pCMV6-ENTRY control (Cat# [PS100001], Left lane) or pCMV6-ENTRY NUS1 (Cat# [RC224928], Right lane) cDNA for 48 hrs and lysed. Equivalent amounts of cell lysates (5 ug per lane) were separated by SDS-PAGE and immunoblotted with anti-NUS1 (Cat# [TA803142]). Positive lysates [LY403360] (100ug) and [LC403360] (20ug) can be purchased separately from OriGene.