

## Product datasheet for **CF803136**

### **PDE1A Mouse Monoclonal Antibody [Clone ID: OTI5C9]**

#### **Product data:**

<b>Product Type:</b>	Primary Antibodies
<b>Clone Name:</b>	OTI5C9
<b>Applications:</b>	WB
<b>Recommended Dilution:</b>	WB 1:2000
<b>Reactivity:</b>	Human, Mouse, Rat
<b>Host:</b>	Mouse
<b>Isotype:</b>	IgG1
<b>Clonality:</b>	Monoclonal
<b>Immunogen:</b>	Human recombinant protein fragment corresponding to amino acids 259-545 of human PDE1A (NP_005010) produced in E.coli.
<b>Formulation:</b>	Lyophilized powder (original buffer 1X PBS, pH 7.3, 8% trehalose)
<b>Reconstitution Method:</b>	For reconstitution, we recommend adding 100uL distilled water to a final antibody concentration of about 1 mg/mL. To use this carrier-free antibody for conjugation experiment, we strongly recommend performing another round of desalting process. (OriGene recommends Zeba Spin Desalting Columns, 7KMWCO from Thermo Scientific)
<b>Purification:</b>	Purified from mouse ascites fluids or tissue culture supernatant by affinity chromatography (protein A/G)
<b>Conjugation:</b>	Unconjugated
<b>Storage:</b>	Store at -20°C as received.
<b>Stability:</b>	Stable for 12 months from date of receipt.
<b>Predicted Protein Size:</b>	62.1 kDa
<b>Gene Name:</b>	phosphodiesterase 1A
<b>Database Link:</b>	<a href="#">NP_005010</a> <a href="#">Entrez Gene 18573 Mouse</a> <a href="#">Entrez Gene 81529 Rat</a> <a href="#">Entrez Gene 5136 Human</a> <a href="#">P54750</a>



[View online »](#)

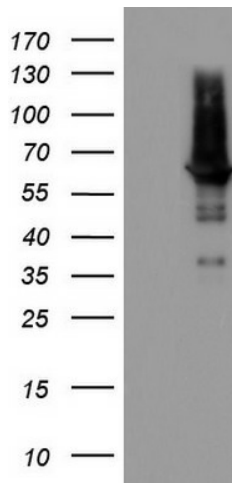
**Background:** Cyclic nucleotide phosphodiesterases (PDEs) play a role in signal transduction by regulating intracellular cyclic nucleotide concentrations through hydrolysis of cAMP and/or cGMP to their respective nucleoside 5-prime monophosphates. Members of the PDE1 family, such as PDE1A, are Ca(2+)/calmodulin (see CALM1; MIM 114180)-dependent PDEs (CaM-PDEs) that are activated by calmodulin in the presence of Ca(2+) (Michibata et al., 2001 [PubMed 11342109]; Fidock et al., 2002 [PubMed 11747989]). [supplied by OMIM, Oct 2009]

**Synonyms:** CAM-PDE-1A; HCAM-1; HCAM1; HSPDE1A

**Protein Families:** Druggable Genome

**Protein Pathways:** Calcium signaling pathway, Progesterone-mediated oocyte maturation, Purine metabolism, Taste transduction

### Product images:



HEK293T cells were transfected with the pCMV6-ENTRY control (Left lane) or pCMV6-ENTRY PDE1A ([RC205292], Right lane) cDNA for 48 hrs and lysed. Equivalent amounts of cell lysates (5 ug per lane) were separated by SDS-PAGE and immunoblotted with anti-PDE1A. Positive lysates [LY401556] (100ug) and [LC401556] (20ug) can be purchased separately from OriGene.