

Product datasheet for **CF803045**

NAB1 Mouse Monoclonal Antibody [Clone ID: OTI4H3]

Product data:

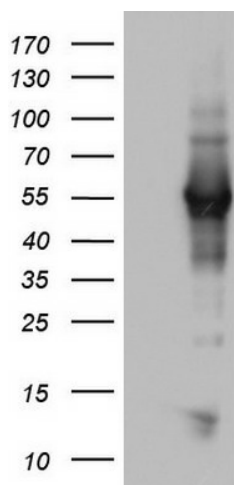
Product Type:	Primary Antibodies
Clone Name:	OTI4H3
Applications:	WB
Recommended Dilution:	WB 1:2000
Reactivity:	Human, Mouse, Rat
Host:	Mouse
Isotype:	IgG2b
Clonality:	Monoclonal
Immunogen:	Human recombinant protein fragment corresponding to amino acids 237-487 of human NAB1 (NP_005957) produced in E.coli.
Formulation:	Lyophilized powder (original buffer 1X PBS, pH 7.3, 8% trehalose)
Reconstitution Method:	For reconstitution, we recommend adding 100uL distilled water to a final antibody concentration of about 1 mg/mL. To use this carrier-free antibody for conjugation experiment, we strongly recommend performing another round of desalting process. (OriGene recommends Zeba Spin Desalting Columns, 7KMWCO from Thermo Scientific)
Purification:	Purified from mouse ascites fluids or tissue culture supernatant by affinity chromatography (protein A/G)
Conjugation:	Unconjugated
Storage:	Store at -20°C as received.
Stability:	Stable for 12 months from date of receipt.
Predicted Protein Size:	54.2 kDa
Gene Name:	NGFI-A binding protein 1
Database Link:	NP_005957 Entrez Gene 4664 Human Q13506
Synonyms:	EGR1 binding protein 1; NGFI-A binding protein 1; NGFI-A binding protein 1 (EGR1 binding protein 1)



[View online »](#)

Protein Families: Transcription Factors

Product images:



HEK293T cells were transfected with the pCMV6-ENTRY control (Left lane) or pCMV6-ENTRY NAB1 ([RC207767], Right lane) cDNA for 48 hrs and lysed. Equivalent amounts of cell lysates (5 ug per lane) were separated by SDS-PAGE and immunoblotted with anti-NAB1. Positive lysates [LY401805] (100ug) and [LC401805] (20ug) can be purchased separately from OriGene.