

Product datasheet for **CF802901**

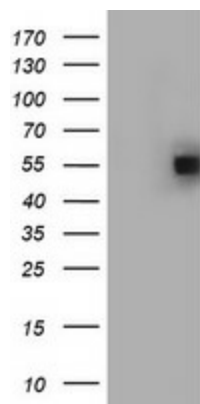
HYPE (FICD) Mouse Monoclonal Antibody [Clone ID: OTI15E10]

Product data:

Product Type:	Primary Antibodies
Clone Name:	OTI15E10
Applications:	WB
Recommended Dilution:	WB 1:500
Reactivity:	Human, Mouse, Rat
Host:	Mouse
Isotype:	IgG1
Clonality:	Monoclonal
Immunogen:	Human recombinant protein fragment corresponding to amino acids 61-265 of human FICD (NP_009007) produced in E.coli.
Formulation:	Lyophilized powder (original buffer 1X PBS, pH 7.3, 8% trehalose)
Reconstitution Method:	For reconstitution, we recommend adding 100uL distilled water to a final antibody concentration of about 1 mg/mL. To use this carrier-free antibody for conjugation experiment, we strongly recommend performing another round of desalting process. (OriGene recommends Zeba Spin Desalting Columns, 7KMWCO from Thermo Scientific)
Purification:	Purified from mouse ascites fluids or tissue culture supernatant by affinity chromatography (protein A/G)
Conjugation:	Unconjugated
Storage:	Store at -20°C as received.
Stability:	Stable for 12 months from date of receipt.
Predicted Protein Size:	51.6 kDa
Gene Name:	FIC domain protein adenylyltransferase
Database Link:	NP_009007 Entrez Gene 231630 Mouse Entrez Gene 288741 Rat Entrez Gene 11153 Human Q9BVA6
Synonyms:	HIP13; HYPE; UNQ3041
Protein Families:	Transmembrane



[View online »](#)

Product images:

HEK293T cells were transfected with the pCMV6-ENTRY control (Left lane) or pCMV6-ENTRY FICD ([RC201725], Right lane) cDNA for 48 hrs and lysed. Equivalent amounts of cell lysates (5 ug per lane) were separated by SDS-PAGE and immunoblotted with anti-FICD. Positive lysates [LY416213] (100ug) and [LC416213] (20ug) can be purchased separately from OriGene.