

Product datasheet for **CF802738**

DOT1L Mouse Monoclonal Antibody [Clone ID: OTI6E7]

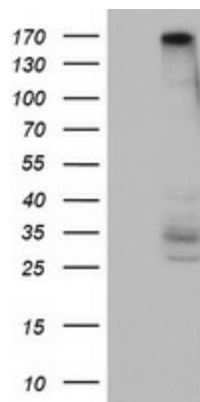
Product data:

Product Type:	Primary Antibodies
Clone Name:	OTI6E7
Applications:	IHC, WB
Recommended Dilution:	WB 1:2000, IHC 1:150
Reactivity:	Human
Host:	Mouse
Isotype:	IgG2b
Clonality:	Monoclonal
Immunogen:	Human recombinant protein fragment corresponding to amino acids 1008-1424 of human DOT1L (NP_115871) produced in E.coli.
Formulation:	Lyophilized powder (original buffer 1X PBS, pH 7.3, 8% trehalose)
Reconstitution Method:	For reconstitution, we recommend adding 100uL distilled water to a final antibody concentration of about 1 mg/mL. To use this carrier-free antibody for conjugation experiment, we strongly recommend performing another round of desalting process. (OriGene recommends Zeba Spin Desalting Columns, 7KMWCO from Thermo Scientific)
Purification:	Purified from mouse ascites fluids or tissue culture supernatant by affinity chromatography (protein A/G)
Conjugation:	Unconjugated
Storage:	Store at -20°C as received.
Stability:	Stable for 12 months from date of receipt.
Predicted Protein Size:	164.7 kDa
Gene Name:	DOT1 like histone lysine methyltransferase
Database Link:	NP_115871 Entrez Gene 84444 Human Q8TEK3
Background:	The protein encoded by this gene is a histone methyltransferase that methylates lysine-79 of histone H3. It is inactive against free core histones, but shows significant histone methyltransferase activity against nucleosomes. [provided by RefSeq, Aug 2011]

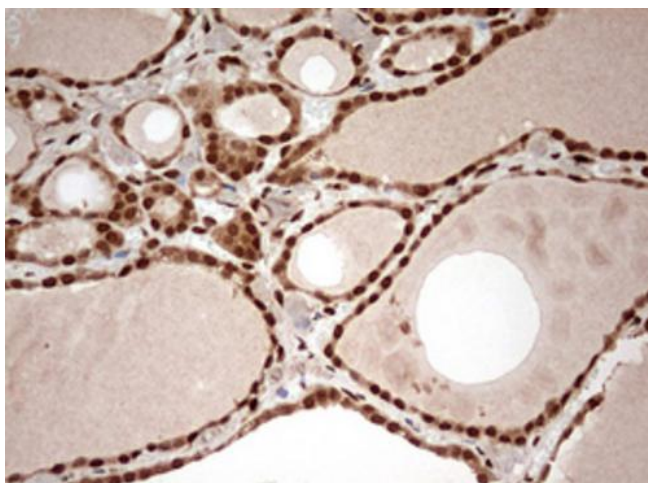


[View online »](#)

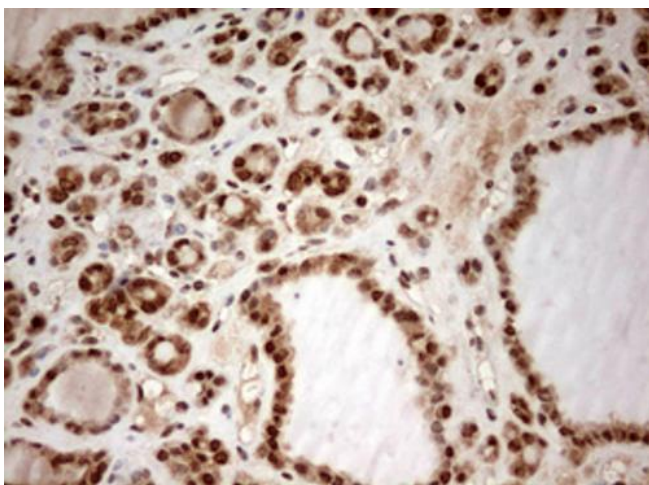
Synonyms: DOT1; KMT4
Protein Families: Druggable Genome
Protein Pathways: Lysine degradation

Product images:

HEK293T cells were transfected with the pCMV6-ENTRY control (Cat# [PS100001], Left lane) or pCMV6-ENTRY DOT1L (Cat# [RC218547], Right lane) cDNA for 48 hrs and lysed. Equivalent amounts of cell lysates (5 ug per lane) were separated by SDS-PAGE and immunoblotted with anti-DOT1L (Cat# [TA802738]). Positive lysates [LY410109] (100ug) and [LC410109] (20ug) can be purchased separately from OriGene.



Immunohistochemical staining of paraffin-embedded Human thyroid tissue within the normal limits using anti-DOT1L mouse monoclonal antibody. Heat-induced epitope retrieval by EDTA solution buffer pH 8.0 at 120°C for 3 min.



Immunohistochemical staining of paraffin-embedded Carcinoma of Human thyroid tissue using anti-DOT1L mouse monoclonal antibody. Heat-induced epitope retrieval by EDTA solution buffer pH 8.0 at 120°C for 3 min.