

## Product datasheet for **CF802699**

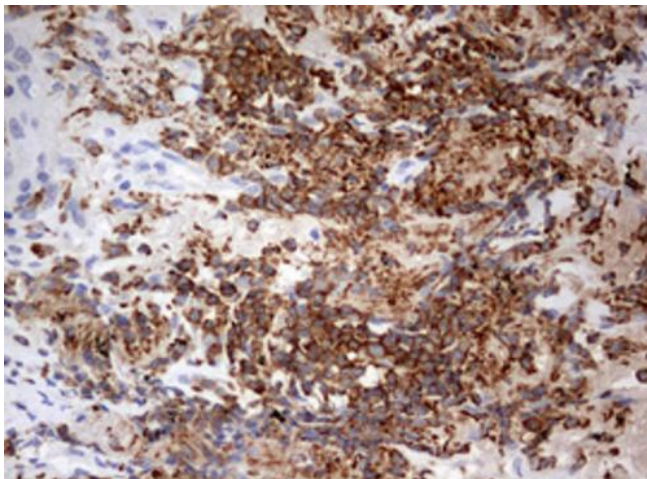
### DOCK2 Mouse Monoclonal Antibody [Clone ID: OTI4E12]

#### Product data:

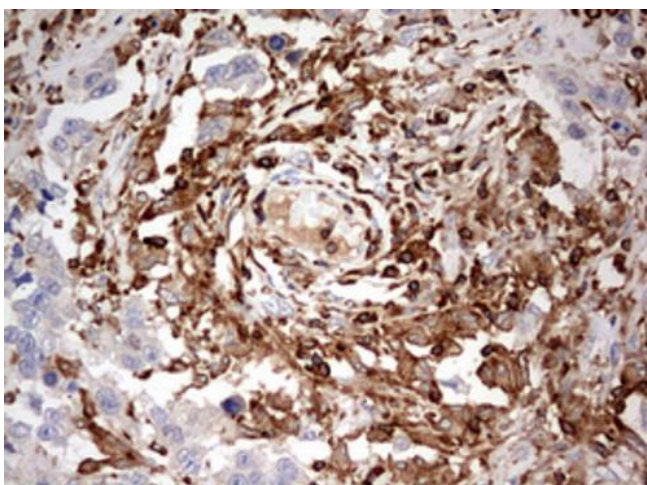
Product Type:	Primary Antibodies
Clone Name:	OTI4E12
Applications:	IHC
Recommended Dilution:	IHC 1:150
Reactivity:	Human, Mouse, Rat
Host:	Mouse
Isotype:	IgG2a
Clonality:	Monoclonal
Immunogen:	Human recombinant protein fragment corresponding to amino acids 1544-1830 of human DOCK2 (NP_004937) produced in E.coli.
Formulation:	Lyophilized powder (original buffer 1X PBS, pH 7.3, 8% trehalose)
Reconstitution Method:	For reconstitution, we recommend adding 100uL distilled water to a final antibody concentration of about 1 mg/mL. To use this carrier-free antibody for conjugation experiment, we strongly recommend performing another round of desalting process. (OriGene recommends Zeba Spin Desalting Columns, 7KMWCO from Thermo Scientific)
Purification:	Purified from mouse ascites fluids or tissue culture supernatant by affinity chromatography (protein A/G)
Conjugation:	Unconjugated
Storage:	Store at -20°C as received.
Stability:	Stable for 12 months from date of receipt.
Gene Name:	dedicator of cytokinesis 2
Database Link:	<a href="#">NP_004937</a> <a href="#">Entrez Gene 94176 Mouse</a> <a href="#">Entrez Gene 360509 Rat</a> <a href="#">Entrez Gene 1794 Human Q92608</a>
Synonyms:	FLJ46592; KIAA0209
Protein Families:	Druggable Genome
Protein Pathways:	Chemokine signaling pathway, Fc gamma R-mediated phagocytosis



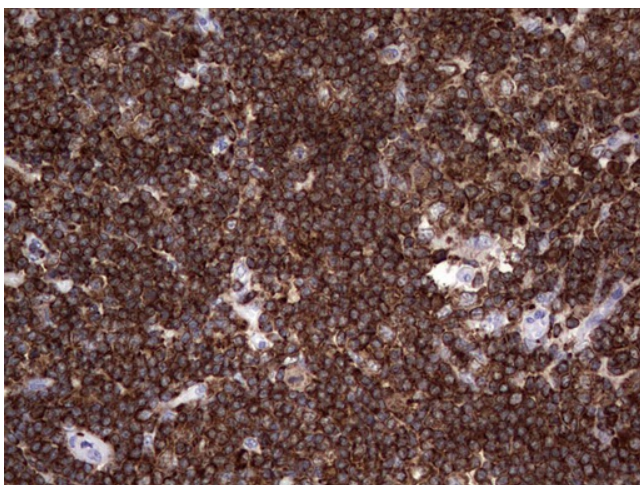
[View online »](#)

**Product images:**

Immunohistochemical staining of paraffin-embedded Carcinoma of Human lung tissue using anti-DOCK2 mouse monoclonal antibody. (Heat-induced epitope retrieval by 1mM EDTA in 10mM Tris, pH8.5, 120°C for 3min, [TA802699])



Immunohistochemical staining of paraffin-embedded Adenocarcinoma of Human ovary tissue using anti-DOCK2 mouse monoclonal antibody. (Heat-induced epitope retrieval by 1mM EDTA in 10mM Tris, pH8.5, 120°C for 3min, [TA802699])



Immunohistochemical staining of paraffin-embedded Human lymph node tissue within the normal limits using anti-DOCK2 mouse monoclonal antibody. (Heat-induced epitope retrieval by 1mM EDTA in 10mM Tris, pH8.5, 120°C for 3min, [TA802699])