

## Product datasheet for **CF802548**

### **Ki67 (MKI67) Mouse Monoclonal Antibody [Clone ID: OTI14G1]**

#### **Product data:**

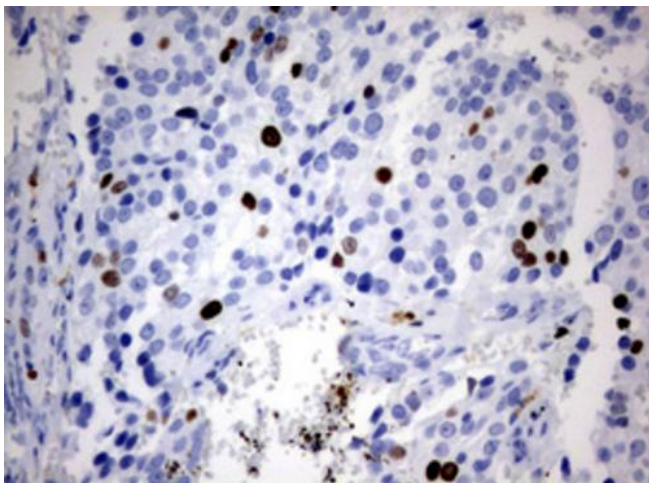
|                               |  |
|-------------------------------|--|
| <b>Product Type:</b>          | Primary Antibodies   |
| <b>Clone Name:</b>            | OTI14G1  |
| <b>Applications:</b>          | IHC  |
| <b>Recommended Dilution:</b>  | IHC 1:100  |
| <b>Reactivity:</b>            | Human  |
| <b>Host:</b>                  | Mouse  |
| <b>Isotype:</b>               | IgG2a  |
| <b>Clonality:</b>             | Monoclonal   |
| <b>Immunogen:</b>             | Human recombinant protein fragment corresponding to amino acids 1160-1493 of human MKI67 (NP_002408) produced in E.coli.   |
| <b>Formulation:</b>           | Lyophilized powder (original buffer 1X PBS, pH 7.3, 8% trehalose)  |
| <b>Reconstitution Method:</b> | For reconstitution, we recommend adding 100uL distilled water to a final antibody concentration of about 1 mg/mL. To use this carrier-free antibody for conjugation experiment, we strongly recommend performing another round of desalting process. (OriGene recommends Zeba Spin Desalting Columns, 7KMWCO from Thermo Scientific) |
| <b>Purification:</b>          | Purified from mouse ascites fluids or tissue culture supernatant by affinity chromatography (protein A/G)  |
| <b>Conjugation:</b>           | Unconjugated   |
| <b>Storage:</b>               | Store at -20°C as received.  |
| <b>Stability:</b>             | Stable for 12 months from date of receipt.   |
| <b>Gene Name:</b>             | marker of proliferation Ki-67  |
| <b>Database Link:</b>         | <a href="#">NP_002408</a><br><a href="#">Entrez Gene 4288 Human P46013</a>   |
| <b>Background:</b>            | This gene encodes a nuclear protein that is associated with and may be necessary for cellular proliferation. Alternatively spliced transcript variants have been described. A related pseudogene exists on chromosome X. [provided by RefSeq, Mar 2009]  |
| <b>Synonyms:</b>              | KIA; MIB-; MIB-1; PPP1R105   |



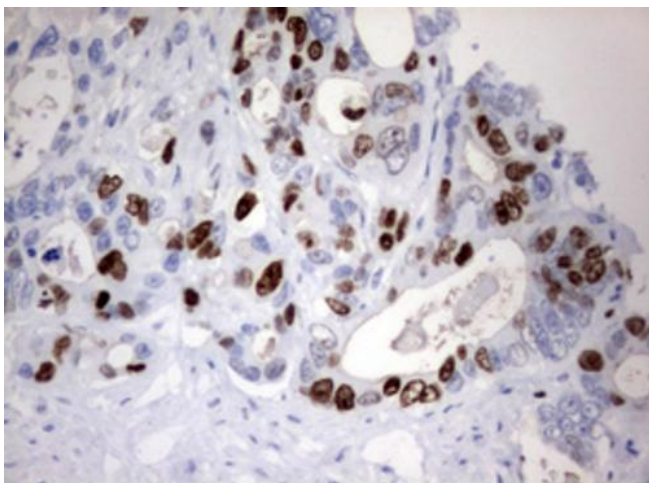
[View online »](#)

Protein Families: Druggable Genome, ES Cell Differentiation/IPS

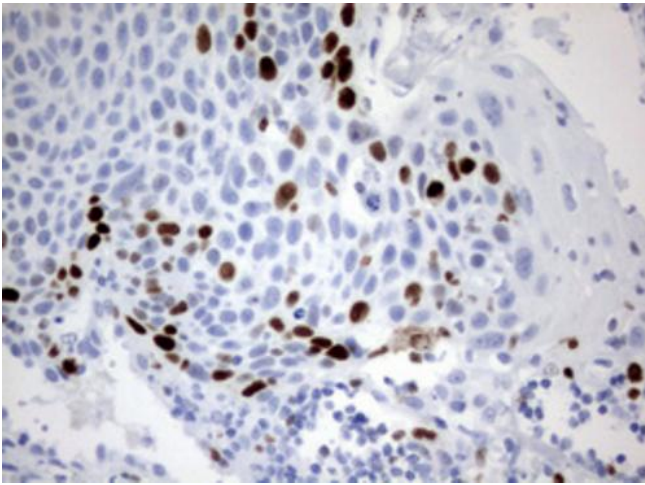
### Product images:



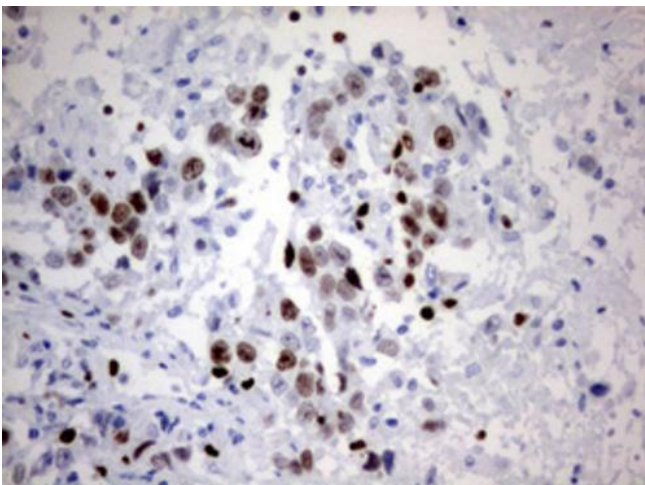
Immunohistochemical staining of paraffin-embedded Adenocarcinoma of Human breast tissue using anti-MKI67 mouse monoclonal antibody. Heat-induced epitope retrieval by EDTA solution buffer pH 8.0 at 120°C for 3 min.



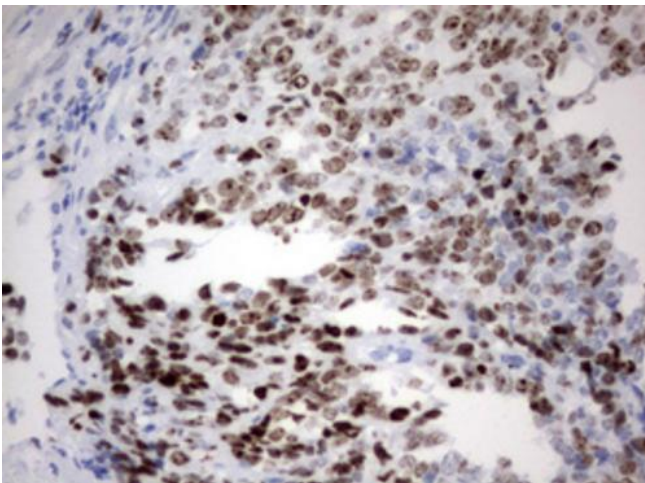
Immunohistochemical staining of paraffin-embedded Adenocarcinoma of Human colon tissue using anti-MKI67 mouse monoclonal antibody. Heat-induced epitope retrieval by EDTA solution buffer pH 8.0 at 120°C for 3 min.



Immunohistochemical staining of paraffin-embedded Carcinoma of Human lung tissue using anti-MKI67 mouse monoclonal antibody. Heat-induced epitope retrieval by EDTA solution buffer pH 8.0 at 120°C for 3 min.

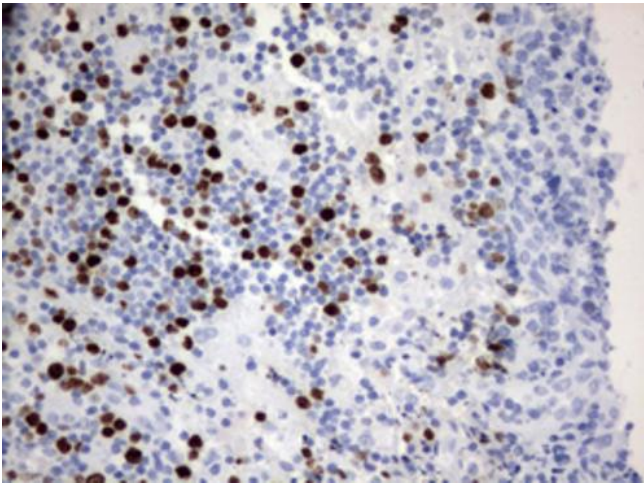


Immunohistochemical staining of paraffin-embedded Adenocarcinoma of Human ovary tissue using anti-MKI67 mouse monoclonal antibody. Heat-induced epitope retrieval by EDTA solution buffer pH 8.0 at 120°C for 3 min.

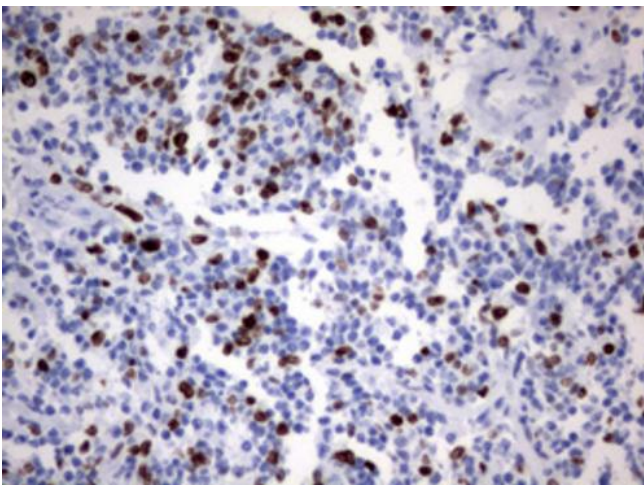


Immunohistochemical staining of paraffin-embedded Adenocarcinoma of Human endometrium tissue using anti-MKI67 mouse monoclonal antibody. Heat-induced epitope retrieval by EDTA solution buffer pH 8.0 at 120°C for 3 min.

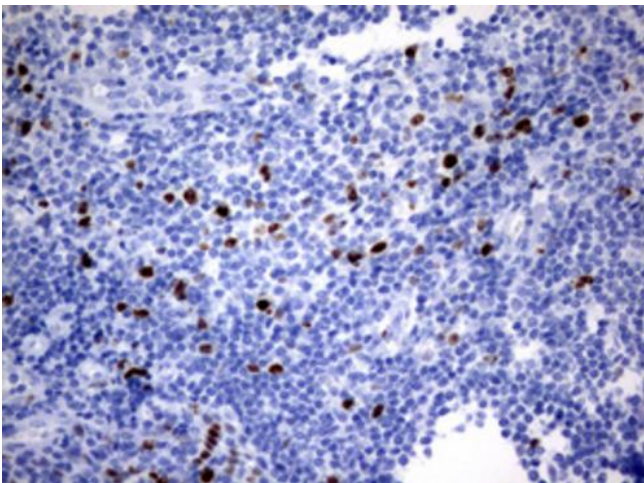




Immunohistochemical staining of paraffin-embedded Human lymph node tissue within the normal limits using anti-MKI67 mouse monoclonal antibody. Heat-induced epitope retrieval by EDTA solution buffer pH 8.0 at 120°C for 3 min.



Immunohistochemical staining of paraffin-embedded Human lymphoma tissue using anti-MKI67 mouse monoclonal antibody. Heat-induced epitope retrieval by EDTA solution buffer pH 8.0 at 120°C for 3 min.



Immunohistochemical staining of paraffin-embedded Human tonsil within the normal limits using anti-MKI67 mouse monoclonal antibody. Heat-induced epitope retrieval by EDTA solution buffer pH 8.0 at 120°C for 3 min.