

Product datasheet for **CF802519**

GAPDH Mouse Monoclonal Antibody [Clone ID: OTI2D9]

Product data:

Product Type:	Primary Antibodies
Clone Name:	OTI2D9
Applications:	WB
Recommended Dilution:	WB 1:500000 @1mg/ml (Hypersensitive substrate ECL)
Reactivity:	Human, Mouse, Rat, Dog, Monkey
Host:	Mouse
Isotype:	IgG1
Clonality:	Monoclonal
Immunogen:	Full length human recombinant protein of human GAPDH (NP_002037) produced in HEK293T cell.
Formulation:	Lyophilized powder (original buffer 1X PBS, pH 7.3, 8% trehalose)
Reconstitution Method:	For reconstitution, we recommend adding 100uL distilled water to a final antibody concentration of about 1 mg/mL. To use this carrier-free antibody for conjugation experiment, we strongly recommend performing another round of desalting process. (OriGene recommends Zeba Spin Desalting Columns, 7KMWCO from Thermo Scientific)
Purification:	Purified from mouse ascites fluids or tissue culture supernatant by affinity chromatography (protein A/G)
Conjugation:	Unconjugated
Storage:	Store at -20°C as received.
Stability:	Stable for 12 months from date of receipt.
Predicted Protein Size:	35.9 kDa
Gene Name:	glyceraldehyde-3-phosphate dehydrogenase
Database Link:	NP_002037 Entrez Gene 14433 Mouse Entrez Gene 24383 Rat Entrez Gene 403755 Dog Entrez Gene 574353 Monkey Entrez Gene 2597 Human P04406



[View online »](#)

Background:

The product of this gene catalyzes an important energy-yielding step in carbohydrate metabolism, the reversible oxidative phosphorylation of glyceraldehyde-3-phosphate in the presence of inorganic phosphate and nicotinamide adenine dinucleotide (NAD). The enzyme exists as a tetramer of identical chains. Many pseudogenes similar to this locus are present in the human genome. Two transcript variants encoding different isoforms have been found for this gene. [provided by RefSeq, Feb 2012]

Synonyms:

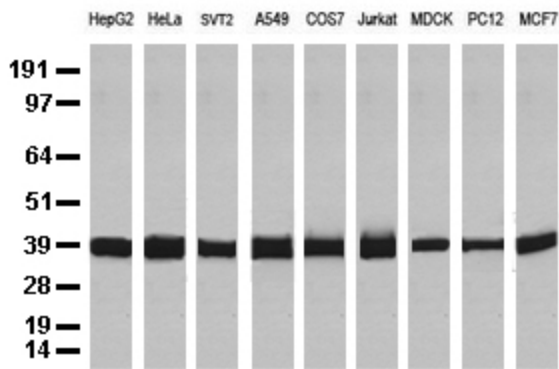
G3PD; GAPD; HEL-S-162eP

Protein Families:

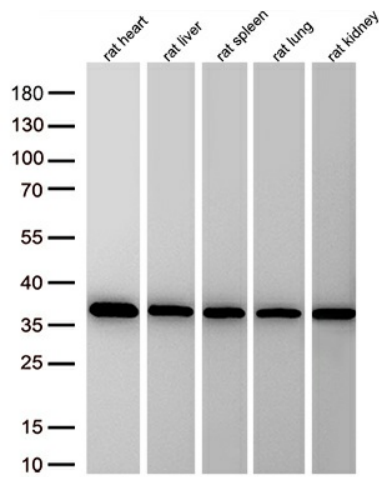
ES Cell Differentiation/IPS

Protein Pathways:

Alzheimer's disease, Glycolysis / Gluconeogenesis, Metabolic pathways

Product images:


Western blot analysis of extracts (35ug) from 9 different cell lines by using anti-GAPDH monoclonal antibody.



Western blot analysis of extracts (15ug) from 5 different tissues lysates by using anti-GAPDH monoclonal antibody (1:3000; 1mg/ml).

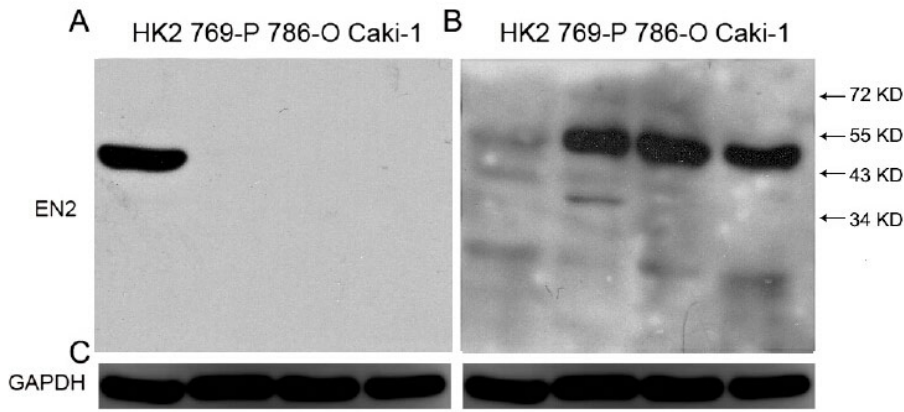


Figure from citation: Western Blot of GAPDH protein level by using anti-GAPDH antibody in human renal cells. [View Citation](#)

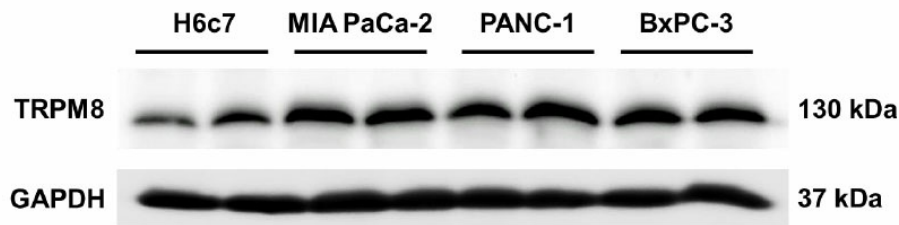


Figure from citation: Western Blot of GAPDH protein level by using anti-GAPDH antibody in human pancreatic adenocarcinoma cell lines. Dilution: 1:2500 [View Citation](#)

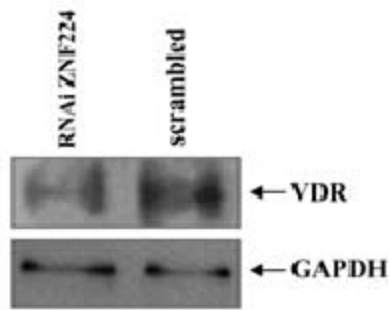


Figure from citation: Western Blot of GAPDH protein level by using anti-GAPDH antibody in human K562 cells. Dilution: 1:1000 [View Citation](#)

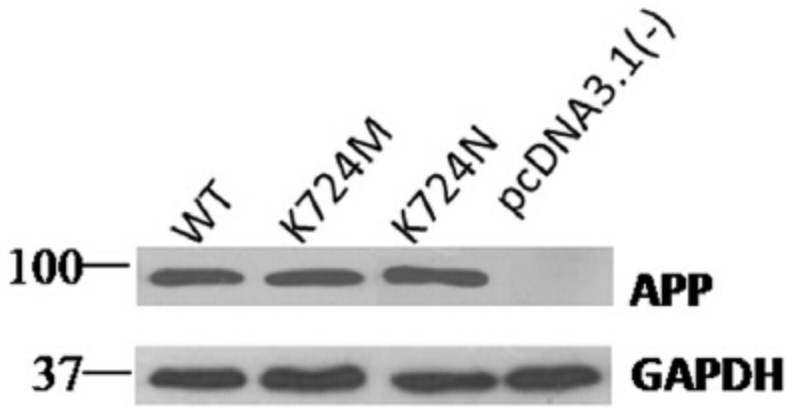


Figure from citation: Western Blot of GAPDH protein level by using anti-GAPDH antibody in HEK293 cells. Dilution: 1:500 [View Citation](#)

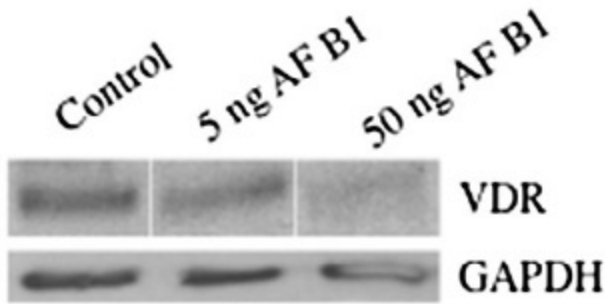


Figure from citation: Western blot analysis of GAPDH protein level by using anti-GAPDH antibody in SAOS-2 cells. Dilution: 1:2000 [View Citation](#)

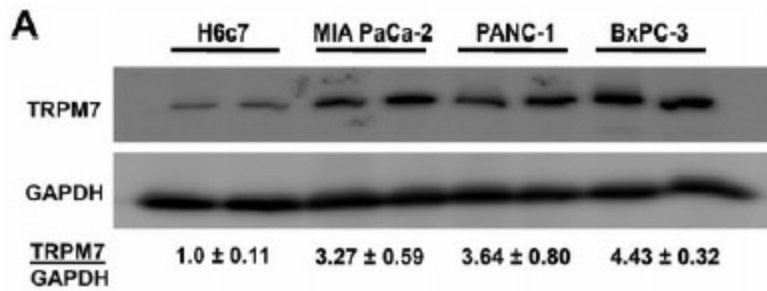


Figure from citation: Western blot analysis of GAPDH protein level by using anti-GAPDH antibody ([TA802519]) in various cell lines, GAPDH used as loading control. [View Citation](#)

C

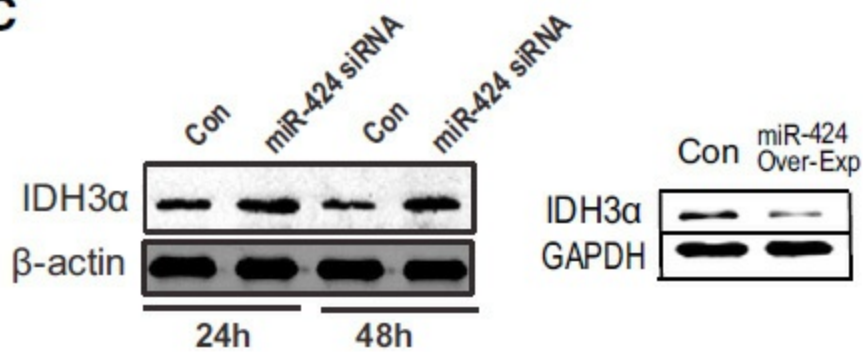


Figure from citation: Western blot analysis of GAPDH protein level by using anti-GAPDH antibody in fibroblasts, GAPDH used as loading control. [View Citation](#)