

## Product datasheet for **CF802368**

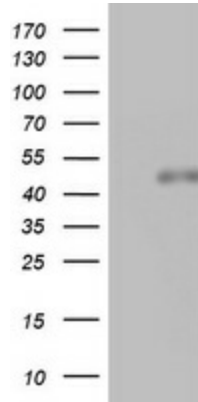
### SPATA2L Mouse Monoclonal Antibody [Clone ID: OTI3F6]

#### Product data:

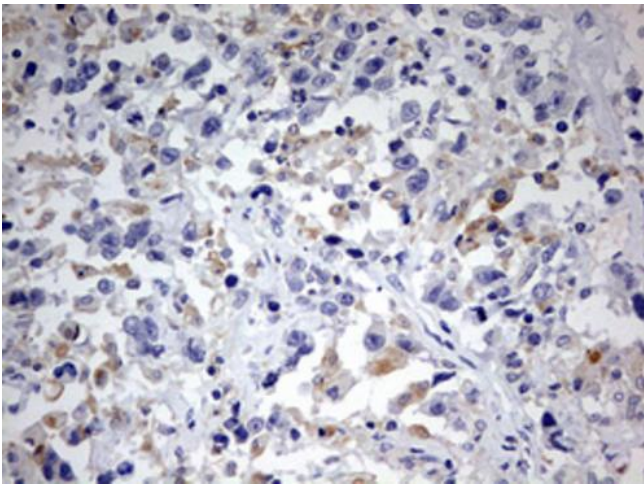
Product Type:	Primary Antibodies
Clone Name:	OTI3F6
Applications:	IHC, WB
Recommended Dilution:	WB 1:2000
Reactivity:	Human, Mouse, Rat
Host:	Mouse
Isotype:	IgG2a
Clonality:	Monoclonal
Immunogen:	Human recombinant protein fragment corresponding to amino acids 179-424 of human SPATA2L (NP_689552) produced in E.coli.
Formulation:	Lyophilized powder (original buffer 1X PBS, pH 7.3, 8% trehalose)
Reconstitution Method:	For reconstitution, we recommend adding 100uL distilled water to a final antibody concentration of about 1 mg/mL. To use this carrier-free antibody for conjugation experiment, we strongly recommend performing another round of desalting process. (OriGene recommends Zeba Spin Desalting Columns, 7KMWCO from Thermo Scientific)
Purification:	Purified from mouse ascites fluids or tissue culture supernatant by affinity chromatography (protein A/G)
Conjugation:	Unconjugated
Storage:	Store at -20°C as received.
Stability:	Stable for 12 months from date of receipt.
Predicted Protein Size:	46 kDa
Gene Name:	spermatogenesis associated 2 like
Database Link:	<a href="#">NP_689552</a> <a href="#">Entrez Gene 78779 Mouse</a> <a href="#">Entrez Gene 498963 Rat</a> <a href="#">Entrez Gene 124044 Human</a> <a href="#">Q8IUW3</a>
Synonyms:	C16orf76; tamo



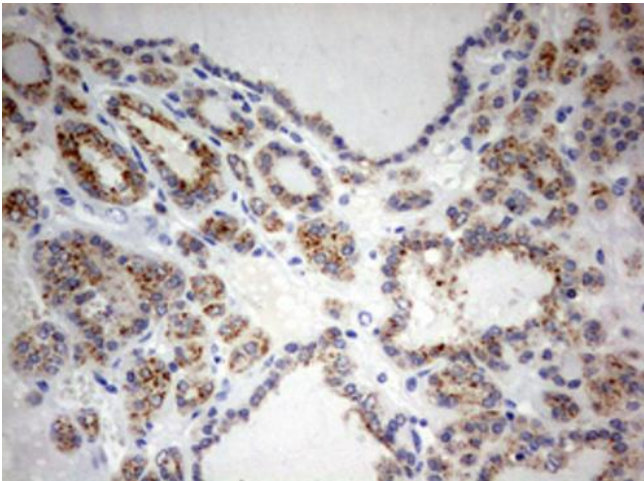
[View online »](#)

**Product images:**

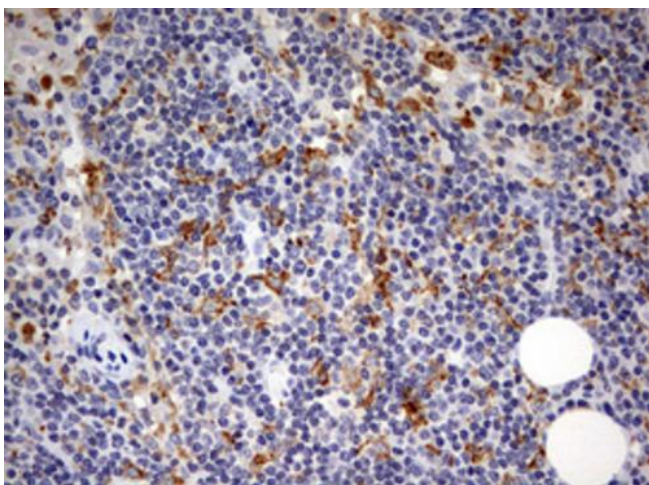
HEK293T cells were transfected with the pCMV6-ENTRY control (Cat# [PS100001], Left lane) or pCMV6-ENTRY SPATA2L (Cat# [RC208075], Right lane) cDNA for 48 hrs and lysed. Equivalent amounts of cell lysates (5 ug per lane) were separated by SDS-PAGE and immunoblotted with anti-SPATA2L (Cat# [TA802368]). Positive lysates [LY407590] (100ug) and [LC407590] (20ug) can be purchased separately from OriGene.



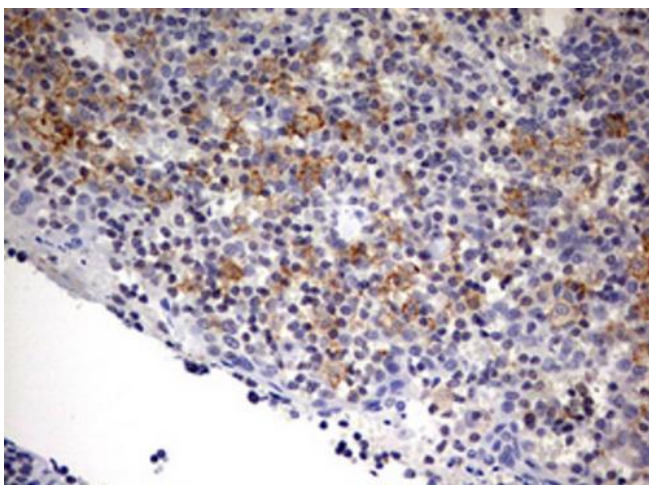
Immunohistochemical staining of paraffin-embedded Adenocarcinoma of Human ovary tissue using anti-SPATA2L mouse monoclonal antibody. ([TA802368]) Dilution: 1:150



Immunohistochemical staining of paraffin-embedded Carcinoma of Human thyroid tissue using anti-SPATA2L mouse monoclonal antibody. ([TA802368]) Dilution: 1:150



Immunohistochemical staining of paraffin-embedded Human lymph node tissue within the normal limits using anti-SPATA2L mouse monoclonal antibody. ([TA802368]) Dilution: 1:150



Immunohistochemical staining of paraffin-embedded Human tonsil within the normal limits using anti-SPATA2L mouse monoclonal antibody. ([TA802368]) Dilution: 1:150