

## Product datasheet for **CF802361**

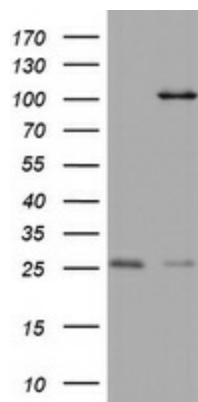
### **C3orf15 (MAATS1) Mouse Monoclonal Antibody [Clone ID: OTI6G1]**

#### **Product data:**

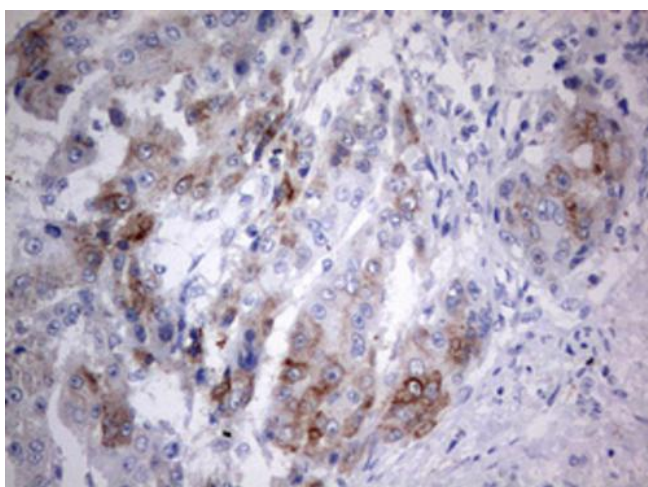
<b>Product Type:</b>	Primary Antibodies
<b>Clone Name:</b>	OTI6G1
<b>Applications:</b>	IHC, WB
<b>Recommended Dilution:</b>	WB 1:500, IHC 1:150
<b>Reactivity:</b>	Human
<b>Host:</b>	Mouse
<b>Isotype:</b>	IgG1
<b>Clonality:</b>	Monoclonal
<b>Immunogen:</b>	Human recombinant protein fragment corresponding to amino acids 1-313 of human C3orf15 (NP_203528) produced in E.coli.
<b>Formulation:</b>	Lyophilized powder (original buffer 1X PBS, pH 7.3, 8% trehalose)
<b>Reconstitution Method:</b>	For reconstitution, we recommend adding 100uL distilled water to a final antibody concentration of about 1 mg/mL. To use this carrier-free antibody for conjugation experiment, we strongly recommend performing another round of desalting process. (OriGene recommends Zeba Spin Desalting Columns, 7KMWCO from Thermo Scientific)
<b>Purification:</b>	Purified from mouse ascites fluids or tissue culture supernatant by affinity chromatography (protein A/G)
<b>Conjugation:</b>	Unconjugated
<b>Storage:</b>	Store at -20°C as received.
<b>Stability:</b>	Stable for 12 months from date of receipt.
<b>Predicted Protein Size:</b>	89.8 kDa
<b>Gene Name:</b>	cilia and flagella associated protein 91
<b>Database Link:</b>	<a href="#">NP_203528</a> <a href="#">Entrez Gene 89876 Human</a> <a href="#">Q7Z4T9</a>
<b>Synonyms:</b>	AAT1; AAT1alpha; C3orf15; CaM-IP2; SPATA26



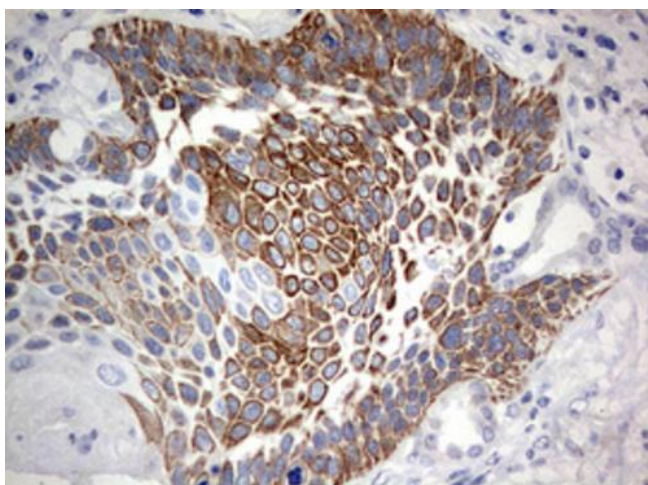
[View online »](#)

**Product images:**

HEK293T cells were transfected with the pCMV6-ENTRY control (Cat# [PS100001], Left lane) or pCMV6-ENTRY C3orf15 (Cat# [RC221319], Right lane) cDNA for 48 hrs and lysed. Equivalent amounts of cell lysates (5 ug per lane) were separated by SDS-PAGE and immunoblotted with anti-C3orf15 (Cat# [TA802361]). Positive lysates [LY409582] (100ug) and [LC409582] (20ug) can be purchased separately from OriGene.



Immunohistochemical staining of paraffin-embedded Carcinoma of Human liver tissue using anti-C3orf15 mouse monoclonal antibody. (Heat-induced epitope retrieval by 10mM citric buffer, pH6.0, 120°C for 3min, [TA802361])



Immunohistochemical staining of paraffin-embedded Carcinoma of Human lung tissue using anti-C3orf15 mouse monoclonal antibody. (Heat-induced epitope retrieval by 10mM citric buffer, pH6.0, 120°C for 3min, [TA802361])