

## Product datasheet for **CF802177**

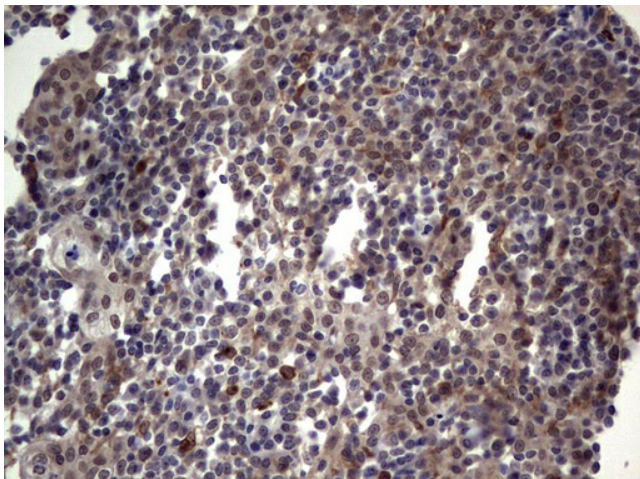
### TET1 Mouse Monoclonal Antibody [Clone ID: OTI8G6]

#### Product data:

Product Type:	Primary Antibodies
Clone Name:	OTI8G6
Applications:	IHC
Recommended Dilution:	IHC 1:150
Reactivity:	Human
Host:	Mouse
Isotype:	IgG2b
Clonality:	Monoclonal
Immunogen:	Human recombinant protein fragment corresponding to amino acids 1-305 of human TET1 (NP_085128) produced in E.coli.
Formulation:	Lyophilized powder (original buffer 1X PBS, pH 7.3, 8% trehalose)
Reconstitution Method:	For reconstitution, we recommend adding 100uL distilled water to a final antibody concentration of about 1 mg/mL. To use this carrier-free antibody for conjugation experiment, we strongly recommend performing another round of desalting process. (OriGene recommends Zeba Spin Desalting Columns, 7KMWCO from Thermo Scientific)
Purification:	Purified from mouse ascites fluids or tissue culture supernatant by affinity chromatography (protein A/G)
Conjugation:	Unconjugated
Storage:	Store at -20°C as received.
Stability:	Stable for 12 months from date of receipt.
Gene Name:	tet methylcytosine dioxygenase 1
Database Link:	<a href="#">NP_085128</a> <a href="#">Entrez Gene 80312 Human</a> <a href="#">Q8NFU7</a>
Synonyms:	bA119F7.1; CXXC6; LCX



[View online »](#)

**Product images:**

Immunohistochemical staining of paraffin-embedded Human tonsil within the normal limits using anti-TET1 mouse monoclonal antibody. (Heat-induced epitope retrieval by 1mM EDTA in 10mM Tris, pH8.5, 120°C for 3min, [TA802177])