

Product datasheet for **CF802012**

Hamartin (TSC1) Mouse Monoclonal Antibody [Clone ID: OTI2B2]

Product data:

Product Type:	Primary Antibodies
Clone Name:	OTI2B2
Applications:	WB
Recommended Dilution:	WB 1:2000
Reactivity:	Human, Mouse, Rat
Host:	Mouse
Isotype:	IgG2a
Clonality:	Monoclonal
Immunogen:	Human recombinant protein fragment corresponding to amino acids 836-1164 of human TSC1 (NP_000359) produced in E.coli.
Formulation:	Lyophilized powder (original buffer 1X PBS, pH 7.3, 8% trehalose)
Reconstitution Method:	For reconstitution, we recommend adding 100uL distilled water to a final antibody concentration of about 1 mg/mL. To use this carrier-free antibody for conjugation experiment, we strongly recommend performing another round of desalting process. (OriGene recommends Zeba Spin Desalting Columns, 7KMWCO from Thermo Scientific)
Purification:	Purified from mouse ascites fluids or tissue culture supernatant by affinity chromatography (protein A/G)
Conjugation:	Unconjugated
Storage:	Store at -20°C as received.
Stability:	Stable for 12 months from date of receipt.
Predicted Protein Size:	129.6 kDa
Gene Name:	TSC complex subunit 1
Database Link:	NP_000359 Entrez Gene 60445 Rat Entrez Gene 64930 Mouse Entrez Gene 7248 Human Q92574
Background:	This gene encodes a growth inhibitory protein thought to play a role in the stabilization of tuberin. Mutations in this gene have been associated with tuberous sclerosis. Alternative splicing results in multiple transcript variants. [provided by RefSeq, Jun

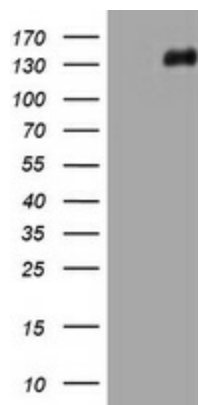


[View online »](#)

Synonyms: LAM; TSC

Protein Pathways: Insulin signaling pathway, mTOR signaling pathway

Product images:



HEK293T cells were transfected with the pCMV6-ENTRY control (Left lane) or pCMV6-ENTRY TSC1 ([RC213332], Right lane) cDNA for 48 hrs and lysed. Equivalent amounts of cell lysates (5 ug per lane) were separated by SDS-PAGE and immunoblotted with anti-TSC1. Positive lysates [LY400132] (100ug) and [LC400132] (20ug) can be purchased separately from OriGene.