

Product datasheet for **CF801746**

HIF 2 alpha (EPAS1) Mouse Monoclonal Antibody [Clone ID: OTI2G5]

Product data:

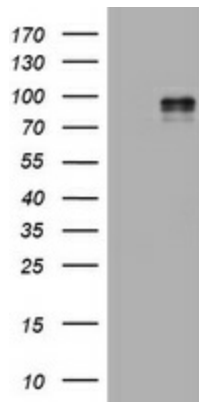
Product Type:	Primary Antibodies
Clone Name:	OTI2G5
Applications:	WB
Recommended Dilution:	WB 1:2000
Reactivity:	Human, Mouse, Rat
Host:	Mouse
Isotype:	IgG1
Clonality:	Monoclonal
Immunogen:	Human recombinant protein fragment corresponding to amino acids 584-870 of human EPAS1 (NP_001421) produced in E.coli.
Formulation:	Lyophilized powder (original buffer 1X PBS, pH 7.3, 8% trehalose)
Reconstitution Method:	For reconstitution, we recommend adding 100uL distilled water to a final antibody concentration of about 1 mg/mL. To use this carrier-free antibody for conjugation experiment, we strongly recommend performing another round of desalting process. (OriGene recommends Zeba Spin Desalting Columns, 7KMWCO from Thermo Scientific)
Purification:	Purified from mouse ascites fluids or tissue culture supernatant by affinity chromatography (protein A/G)
Conjugation:	Unconjugated
Storage:	Store at -20°C as received.
Stability:	Stable for 12 months from date of receipt.
Predicted Protein Size:	96.3 kDa
Gene Name:	endothelial PAS domain protein 1
Database Link:	NP_001421 Entrez Gene 13819 Mouse Entrez Gene 29452 Rat Entrez Gene 2034 Human Q99814
Synonyms:	bHLHe73; ECYT4; HIF2A; HLF; MOP2; PASD2
Protein Families:	Druggable Genome, Transcription Factors



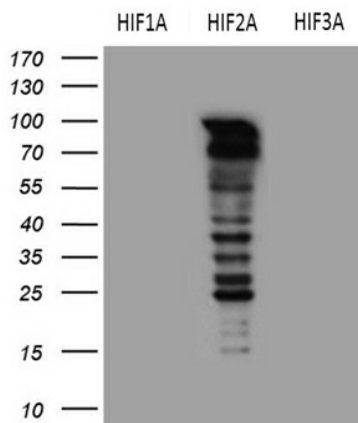
[View online »](#)

Protein Pathways: Pathways in cancer, Renal cell carcinoma

Product images:



HEK293T cells were transfected with the pCMV6-ENTRY control (Cat# [PS100001], Left lane) or pCMV6-ENTRY EPAS1 (Cat# [RC208604], Right lane) cDNA for 48 hrs and lysed. Equivalent amounts of cell lysates (5 ug per lane) were separated by SDS-PAGE and immunoblotted with anti-EPAS1(Cat# [TA801746]). Positive lysates [LY400555] (100ug) and [LC400555] (20ug) can be purchased separately from OriGene.



HEK293T cells were transfected with the pCMV6-HIF1A (Cat# [RC202461]), pCMV6-EPAS1 (Cat# [RC208604]) and pCMV6-HIF3A (Cat# [RC210255]) (1:2000).