

## Product datasheet for **CF801531**

### CD23 (FCER2) Mouse Monoclonal Antibody [Clone ID: OTI2B6]

#### Product data:

Product Type:	Primary Antibodies
Clone Name:	OTI2B6
Applications:	FC, IHC, WB
Recommended Dilution:	WB 1:2000, IHC 1:150
Reactivity:	Human
Host:	Mouse
Isotype:	IgG1
Clonality:	Monoclonal
Immunogen:	Human recombinant protein fragment corresponding to amino acids 48-321 of human FCER2 (NP_001993) produced in SF9 cell.
Formulation:	Lyophilized powder (original buffer 1X PBS, pH 7.3, 8% trehalose)
Reconstitution Method:	For reconstitution, we recommend adding 100uL distilled water to a final antibody concentration of about 1 mg/mL. To use this carrier-free antibody for conjugation experiment, we strongly recommend performing another round of desalting process. (OriGene recommends Zeba Spin Desalting Columns, 7KMWCO from Thermo Scientific)
Purification:	Purified from mouse ascites fluids or tissue culture supernatant by affinity chromatography (protein A/G)
Conjugation:	Unconjugated
Storage:	Store at -20°C as received.
Stability:	Stable for 12 months from date of receipt.
Predicted Protein Size:	36.3 kDa
Gene Name:	Fc fragment of IgE receptor II
Database Link:	<a href="#">NP_001993</a> <a href="#">Entrez Gene 2208 Human P06734</a>



[View online »](#)

**Background:**

The protein encoded by this gene is a B-cell specific antigen, and a low-affinity receptor for IgE. It has essential roles in B cell growth and differentiation, and the regulation of IgE production. This protein also exists as a soluble secreted form, then functioning as a potent mitogenic growth factor. Alternatively spliced transcript variants encoding different isoforms have been described for this gene. [provided by RefSeq, Jul

**Synonyms:**

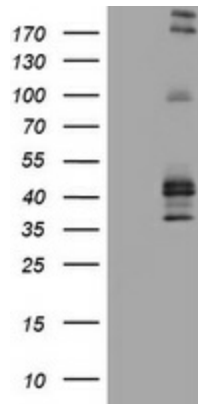
BLAST-2; CD23; CD23A; CLEC4J; FCE2; IGEBF

**Protein Families:**

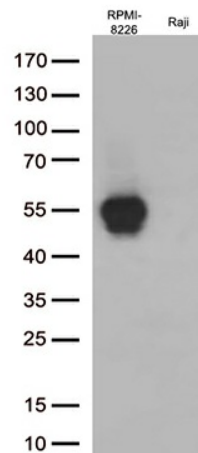
Secreted Protein, Transmembrane

**Protein Pathways:**

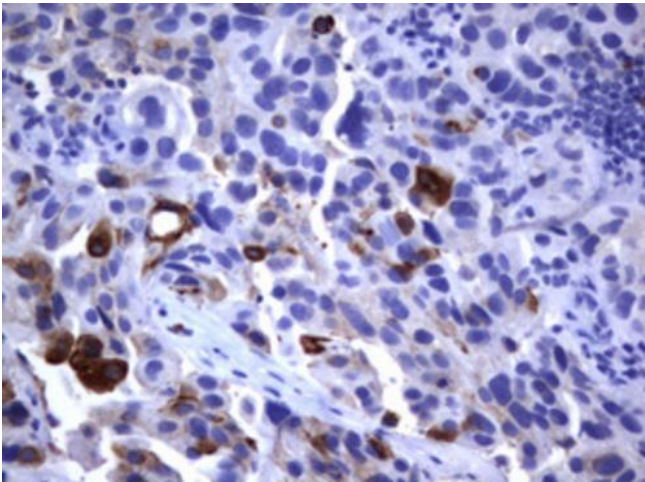
Hematopoietic cell lineage

**Product images:**


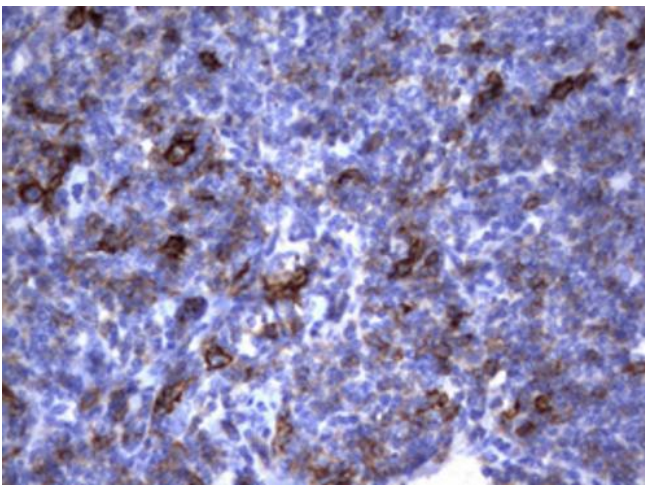
HEK293T cells were transfected with the pCMV6-ENTRY control (Cat# [PS100001], Left lane) or pCMV6-ENTRY FCER2 (Cat# [RC204335], Right lane) cDNA for 48 hrs and lysed. Equivalent amounts of cell lysates (5 ug per lane) were separated by SDS-PAGE and immunoblotted with anti-FCER2 (Cat# [TA801531])(1:2000).



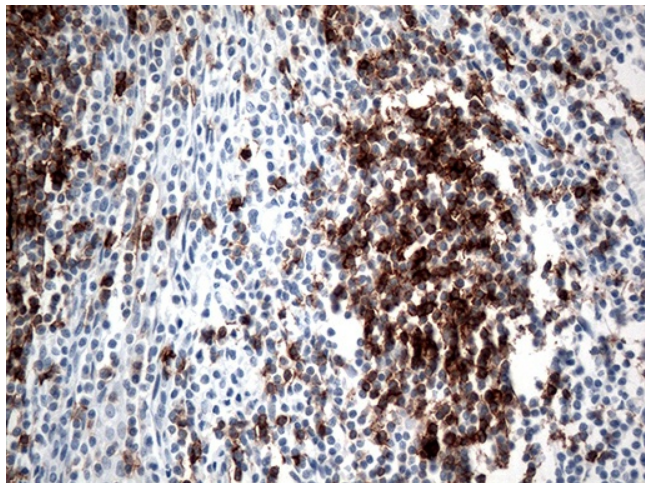
Western blot analysis of extracts (35ug) from 2 cell lines lysates by using anti-FCER2 monoclonal antibody (1:500).



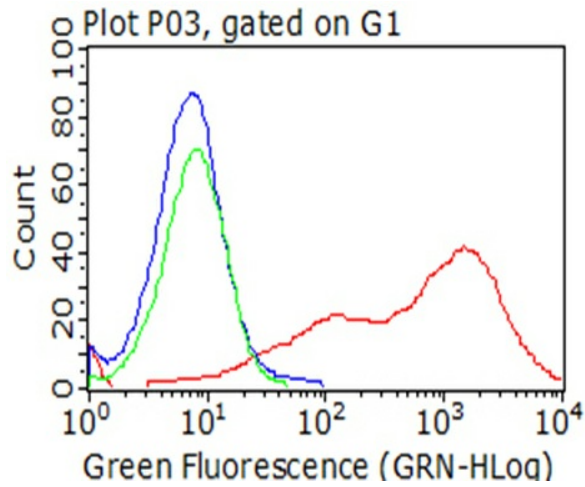
Immunohistochemical staining of paraffin-embedded Carcinoma of Human bladder tissue using anti-FCER2 mouse monoclonal antibody. (Heat-induced epitope retrieval by 10mM citric buffer, pH6.0, 120°C for 3min, [TA801531]) (1:150)



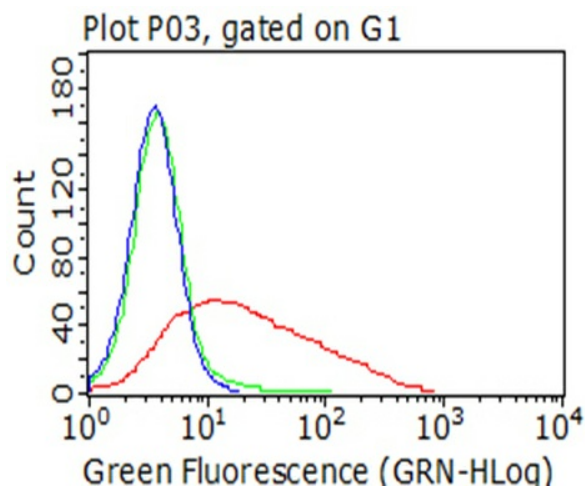
Immunohistochemical staining of paraffin-embedded Human lymphoma tissue using anti-FCER2 mouse monoclonal antibody. (Heat-induced epitope retrieval by 10mM citric buffer, pH6.0, 120°C for 3min, [TA801531]) (1:150)



Immunohistochemical staining of paraffin-embedded Human tonsil within the normal limits using anti-FCER2 mouse monoclonal antibody. (Heat-induced epitope retrieval by 1mM EDTA in 10mM Tris buffer (pH8.5) at 120°C for 3min, [TA801531]) (1:500)



Flow cytometric analysis of living 293T cells transfected with FCER2 overexpression plasmid ([RC204335], Red)/empty vector ([PS100001], Blue) using anti-FCER2 antibody ([TA801531]). Cells incubated with a non-specific antibody (Green) were used as isotype control (1:100).



Flow cytometric analysis of living RPMI-8226 cells, using anti-FCER2 antibody ([TA801531], Red), compared to an isotype control (green), and a PBS control (blue) (1:100).