

## Product datasheet for **CF801490**

### DNA Polymerase iota (POLI) Mouse Monoclonal Antibody [Clone ID: OTI4C12]

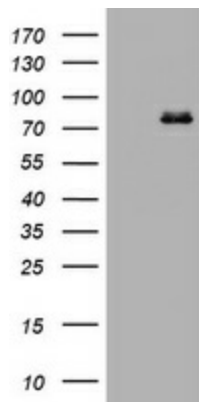
#### Product data:

Product Type:	Primary Antibodies
Clone Name:	OTI4C12
Applications:	WB
Recommended Dilution:	WB 1:2000
Reactivity:	Human
Host:	Mouse
Isotype:	IgG1
Clonality:	Monoclonal
Immunogen:	Human recombinant protein fragment corresponding to amino acids 458-740 of human POLI (NP_009126) produced in E.coli.
Formulation:	Lyophilized powder (original buffer 1X PBS, pH 7.3, 8% trehalose)
Reconstitution Method:	For reconstitution, we recommend adding 100uL distilled water to a final antibody concentration of about 1 mg/mL. To use this carrier-free antibody for conjugation experiment, we strongly recommend performing another round of desalting process. (OriGene recommends Zeba Spin Desalting Columns, 7KMWCO from Thermo Scientific)
Purification:	Purified from mouse ascites fluids or tissue culture supernatant by affinity chromatography (protein A/G)
Conjugation:	Unconjugated
Storage:	Store at -20°C as received.
Stability:	Stable for 12 months from date of receipt.
Predicted Protein Size:	82.8 kDa
Gene Name:	DNA polymerase iota
Database Link:	<a href="#">NP_009126</a> <a href="#">Entrez Gene 11201 Human Q9UNA4</a>
Synonyms:	RAD3OB; RAD30B
Protein Families:	Druggable Genome

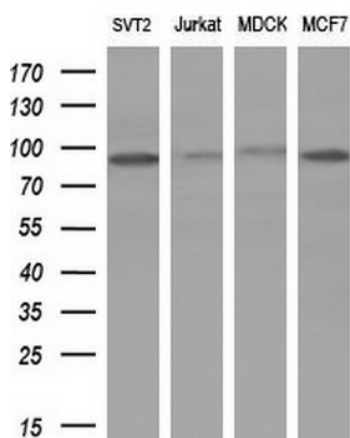


[View online »](#)

**Product images:**



HEK293T cells were transfected with the pCMV6-ENTRY control (Left lane) or pCMV6-ENTRY POLI ([RC207550], Right lane) cDNA for 48 hrs and lysed. Equivalent amounts of cell lysates (5 ug per lane) were separated by SDS-PAGE and immunoblotted with anti-POLI. Positive lysates [LY416129] (100ug) and [LC416129] (20ug) can be purchased separately from OriGene.



Western blot analysis of extracts (10ug) from 4 different cell lines by using anti-POLI monoclonal antibody (1:200).