

Product datasheet for **CF801430**

NM23A (NME1) Mouse Monoclonal Antibody [Clone ID: OTI6E9]

Product data:

Product Type:	Primary Antibodies
Clone Name:	OTI6E9
Applications:	IHC, WB
Recommended Dilution:	WB 1:2000, IHC 1:150
Reactivity:	Human, Mouse, Rat
Host:	Mouse
Isotype:	IgG1
Clonality:	Monoclonal
Immunogen:	Full length human recombinant protein of human NME1 (NP_937818) produced in E.coli.
Formulation:	Lyophilized powder (original buffer 1X PBS, pH 7.3, 8% trehalose)
Reconstitution Method:	For reconstitution, we recommend adding 100uL distilled water to a final antibody concentration of about 1 mg/mL. To use this carrier-free antibody for conjugation experiment, we strongly recommend performing another round of desalting process. (OriGene recommends Zeba Spin Desalting Columns, 7KMWCO from Thermo Scientific)
Purification:	Purified from mouse ascites fluids or tissue culture supernatant by affinity chromatography (protein A/G)
Conjugation:	Unconjugated
Storage:	Store at -20°C as received.
Stability:	Stable for 12 months from date of receipt.
Predicted Protein Size:	19.5 kDa
Gene Name:	NME/NM23 nucleoside diphosphate kinase 1
Database Link:	NP_937818 Entrez Gene 18102 Mouse Entrez Gene 191575 Rat Entrez Gene 4830 Human P15531



[View online »](#)

Background:

This gene (NME1) was identified because of its reduced mRNA transcript levels in highly metastatic cells. Nucleoside diphosphate kinase (NDK) exists as a hexamer composed of 'A' (encoded by this gene) and 'B' (encoded by NME2) isoforms. Mutations in this gene have been identified in aggressive neuroblastomas. Two transcript variants encoding different isoforms have been found for this gene. Co-transcription of this gene and the neighboring downstream gene (NME2) generates naturally-occurring transcripts (NME1-NME2), which encodes a fusion protein comprised of sequence sharing identity with each individual gene product. [provided by RefSeq, Jul 2008]

Synonyms:

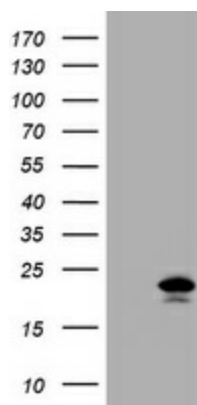
AWD; GAAD; NB; NBS; NDKA; NDPK-A; NDPKA; NM23; NM23-H1

Protein Families:

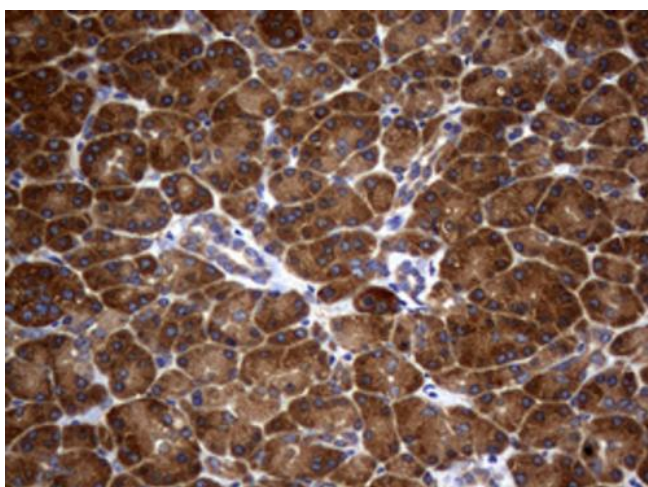
Druggable Genome, Stem cell - Pluripotency

Protein Pathways:

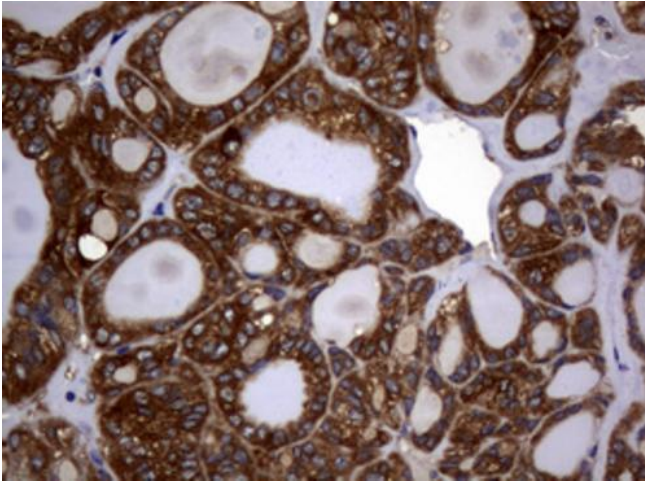
Metabolic pathways, Purine metabolism, Pyrimidine metabolism

Product images:

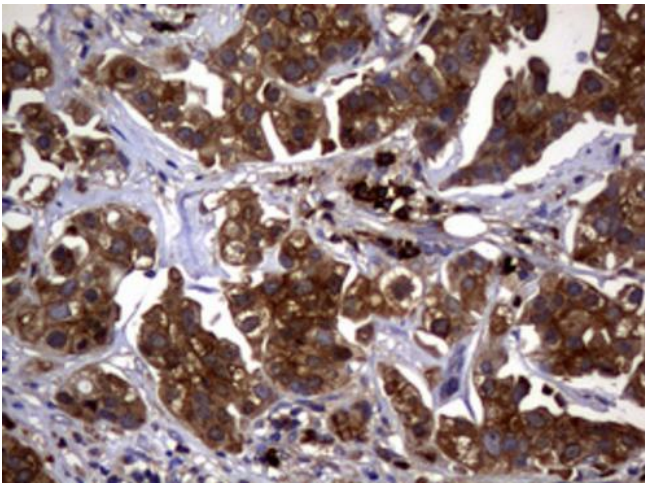
HEK293T cells were transfected with the pCMV6-ENTRY control (Left lane) or pCMV6-ENTRY NME1 ([RC220517], Right lane) cDNA for 48 hrs and lysed. Equivalent amounts of cell lysates (5 ug per lane) were separated by SDS-PAGE and immunoblotted with anti-NME1. Positive lysates [LY404982] (100ug) and [LC404982] (20ug) can be purchased separately from OriGene.



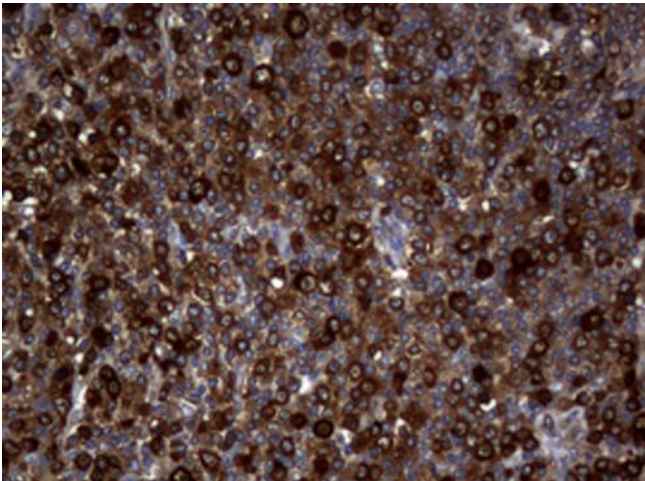
Immunohistochemical staining of paraffin-embedded Human pancreas tissue within the normal limits using anti-NME1 mouse monoclonal antibody. (Heat-induced epitope retrieval by 10mM citric buffer, pH6.0, 120°C for 3min, [TA801430])



Immunohistochemical staining of paraffin-embedded Carcinoma of Human thyroid tissue using anti-NME1 mouse monoclonal antibody. (Heat-induced epitope retrieval by 10mM citric buffer, pH6.0, 120°C for 3min, [TA801430])



Immunohistochemical staining of paraffin-embedded Carcinoma of Human bladder tissue using anti-NME1 mouse monoclonal antibody. (Heat-induced epitope retrieval by 10mM citric buffer, pH6.0, 120°C for 3min, [TA801430])



Immunohistochemical staining of paraffin-embedded Human lymphoma tissue using anti-NME1 mouse monoclonal antibody. (Heat-induced epitope retrieval by 10mM citric buffer, pH6.0, 120°C for 3min, [TA801430])