

## Product datasheet for **CF801310**

### Vimentin (VIM) Mouse Monoclonal Antibody [Clone ID: OTI2C4]

#### Product data:

Product Type:	Primary Antibodies
Clone Name:	OTI2C4
Applications:	WB
Recommended Dilution:	WB 1:2000
Reactivity:	Human, Mouse, Rat
Host:	Mouse
Isotype:	IgG1
Clonality:	Monoclonal
Immunogen:	Full length human recombinant protein of human VIM (NP_003371) produced in E.coli.
Formulation:	Lyophilized powder (original buffer 1X PBS, pH 7.3, 8% trehalose)
Reconstitution Method:	For reconstitution, we recommend adding 100uL distilled water to a final antibody concentration of about 1 mg/mL. To use this carrier-free antibody for conjugation experiment, we strongly recommend performing another round of desalting process. (OriGene recommends Zeba Spin Desalting Columns, 7KMWCO from Thermo Scientific)
Purification:	Purified from mouse ascites fluids or tissue culture supernatant by affinity chromatography (protein A/G)
Conjugation:	Unconjugated
Storage:	Store at -20°C as received.
Stability:	Stable for 12 months from date of receipt.
Predicted Protein Size:	53.5 kDa
Gene Name:	vimentin
Database Link:	<a href="#">NP_003371</a> <a href="#">Entrez Gene 22352 Mouse</a> <a href="#">Entrez Gene 81818 Rat</a> <a href="#">Entrez Gene 7431 Human</a> <a href="#">P08670</a>



[View online »](#)

**Background:**

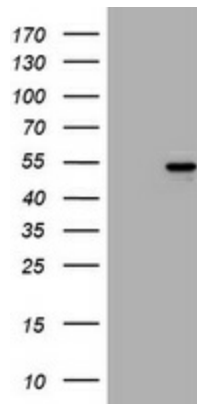
This gene encodes a member of the intermediate filament family. Intermediate filaments, along with microtubules and actin microfilaments, make up the cytoskeleton. The protein encoded by this gene is responsible for maintaining cell shape, integrity of the cytoplasm, and stabilizing cytoskeletal interactions. It is also involved in the immune response, and controls the transport of low-density lipoprotein (LDL)-derived cholesterol from a lysosome to the site of esterification. It functions as an organizer of a number of critical proteins involved in attachment, migration, and cell signaling. Mutations in this gene causes a dominant, pulverulent cataract. [provided by RefSeq, Jun 2009]

**Synonyms:**

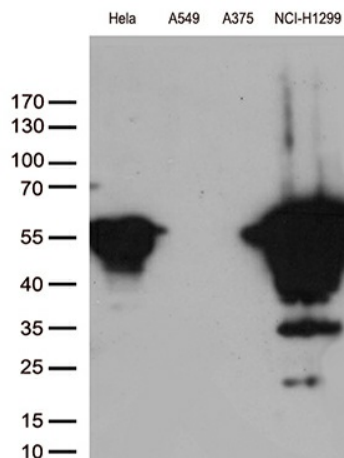
CTRCT30; HEL113

**Protein Families:**

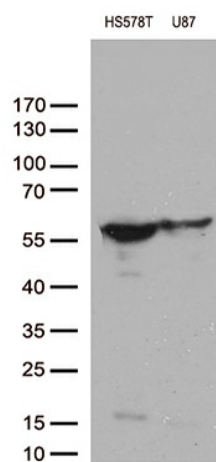
ES Cell Differentiation/IPS

**Product images:**


HEK293T cells were transfected with the pCMV6-ENTRY control (Left lane) or pCMV6-ENTRY VIM ([RC201546], Right lane) cDNA for 48 hrs and lysed. Equivalent amounts of cell lysates (5 ug per lane) were separated by SDS-PAGE and immunoblotted with anti-VIM. Positive lysates [LY401165] (100ug) and [LC401165] (20ug) can be purchased separately from OriGene.



Western blot analysis of extracts (35ug) from 4 different cell lines by using anti-VIM monoclonal antibody (1:500).



Western blot analysis of extracts (35ug) from 2 different cell lines by using anti-VIM monoclonal antibody (1:500).