

Product datasheet for **CF801212**

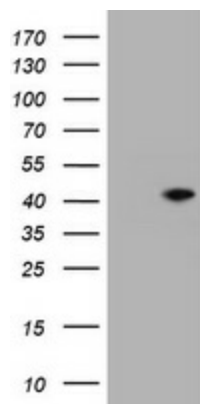
MUC16 Mouse Monoclonal Antibody [Clone ID: OTI2F1]

Product data:

Product Type:	Primary Antibodies
Clone Name:	OTI2F1
Applications:	WB
Recommended Dilution:	WB 1:1000
Reactivity:	Human
Host:	Mouse
Isotype:	IgG1
Clonality:	Monoclonal
Immunogen:	Human recombinant protein fragment corresponding to amino acids 10329-10628 of human MUC16 (NP_078966) produced in E.coli.
Formulation:	Lyophilized powder (original buffer 1X PBS, pH 7.3, 8% trehalose)
Reconstitution Method:	For reconstitution, we recommend adding 100uL distilled water to a final antibody concentration of about 1 mg/mL. To use this carrier-free antibody for conjugation experiment, we strongly recommend performing another round of desalting process. (OriGene recommends Zeba Spin Desalting Columns, 7KMWCO from Thermo Scientific)
Purification:	Purified from mouse ascites fluids or tissue culture supernatant by affinity chromatography (protein A/G)
Conjugation:	Unconjugated
Storage:	Store at -20°C as received.
Stability:	Stable for 12 months from date of receipt.
Gene Name:	mucin 16, cell surface associated
Database Link:	NP_078966 Entrez Gene 94025 Human Q8WXI7
Synonyms:	CA125



[View online »](#)

Product images:

E.coli lysate (left lane) and E.coli lysate expressing Human recombinant protein fragment (right lane) corresponding to amino acids 10329-10628 of human MUC16 (NP_078966) were separated by SDS-PAGE and immunoblotted with anti-MUC16.