

## Product datasheet for **CF801025**

### P Glycoprotein (ABCB1) Mouse Monoclonal Antibody [Clone ID: OTI3B2]

#### Product data:

Product Type:	Primary Antibodies
Clone Name:	OTI3B2
Applications:	IHC, WB
Recommended Dilution:	IHC 1:150
Reactivity:	Human, Mouse, Rat
Host:	Mouse
Isotype:	IgG2b
Clonality:	Monoclonal
Immunogen:	Human recombinant protein fragment corresponding to amino acids 347-710 of human ABCB1 (NP_000918) produced in E.coli.
Formulation:	Lyophilized powder (original buffer 1X PBS, pH 7.3, 8% trehalose)
Reconstitution Method:	For reconstitution, we recommend adding 100uL distilled water to a final antibody concentration of about 1 mg/mL. To use this carrier-free antibody for conjugation experiment, we strongly recommend performing another round of desalting process. (OriGene recommends Zeba Spin Desalting Columns, 7KMWCO from Thermo Scientific)
Purification:	Purified from mouse ascites fluids or tissue culture supernatant by affinity chromatography (protein A/G)
Conjugation:	Unconjugated
Storage:	Store at -20°C as received.
Stability:	Stable for 12 months from date of receipt.
Gene Name:	ATP binding cassette subfamily B member 1
Database Link:	<a href="#">NP_000918</a> <a href="#">Entrez Gene 170913 Rat</a> <a href="#">Entrez Gene 5243 Human</a> <a href="#">P08183</a>



[View online »](#)

**Background:**

The membrane-associated protein encoded by this gene is a member of the superfamily of ATP-binding cassette (ABC) transporters. ABC proteins transport various molecules across extra- and intra-cellular membranes. ABC genes are divided into seven distinct subfamilies (ABC1, MDR/TAP, MRP, ALD, OABP, GCN20, White). This protein is a member of the MDR/TAP subfamily. Members of the MDR/TAP subfamily are involved in multidrug resistance. The protein encoded by this gene is an ATP-dependent drug efflux pump for xenobiotic compounds with broad substrate specificity. It is responsible for decreased drug accumulation in multidrug-resistant cells and often mediates the development of resistance to anticancer drugs. This protein also functions as a transporter in the blood-brain barrier. [provided by RefSeq, Jul 2008]

**Synonyms:**

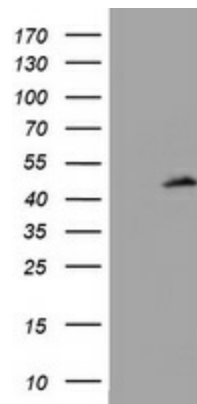
ABC20; CD243; CLCS; GP170; MDR1; p-170; P-GP; PGY1

**Protein Families:**

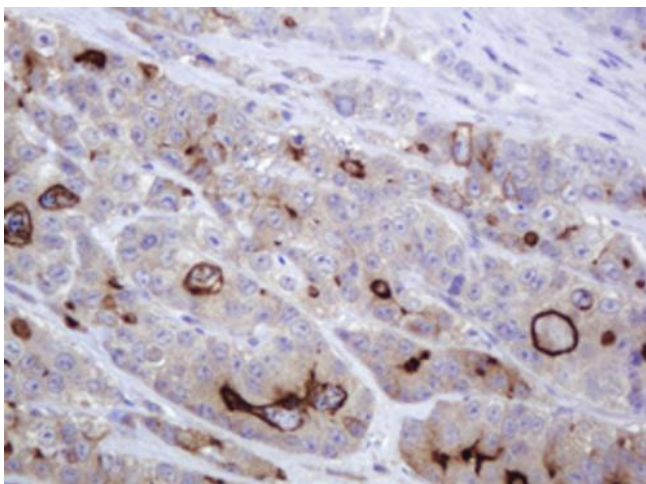
Druggable Genome, ES Cell Differentiation/IPS, Transmembrane

**Protein Pathways:**

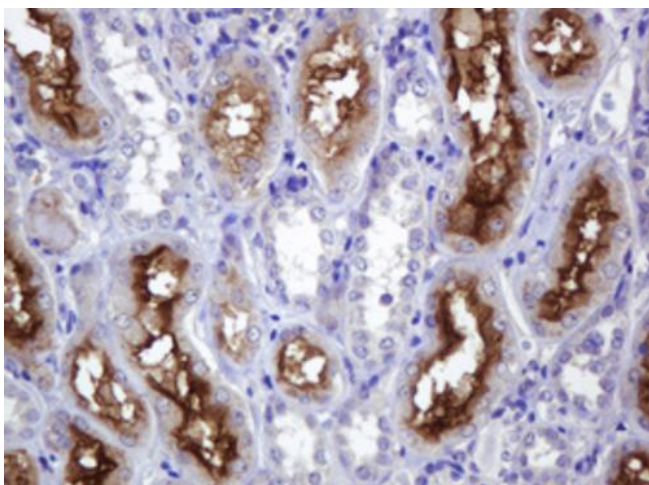
ABC transporters

**Product images:**

SF9 cells lysate (5 ug, left lane) and SF9 cells lysate expressing human recombinant protein fragment (5 ug, right lane) corresponding to amino acids 995-1280 of human ABCB1 (NP\_000918) were separated by SDS-PAGE and immunoblotted with anti-ABCB1.



Immunohistochemical staining of paraffin-embedded Adenocarcinoma of Human colon tissue using anti-ABCB1 mouse monoclonal antibody. Heat-induced epitope retrieval by EDTA solution buffer pH 8.0 at 120°C for 3 min.



Immunohistochemical staining of paraffin-embedded Human Kidney tissue within the normal limits using anti-ABCB1 mouse monoclonal antibody. Heat-induced epitope retrieval by EDTA solution buffer pH 8.0 at 120°C for 3 min.