

Product datasheet for **CF800686**

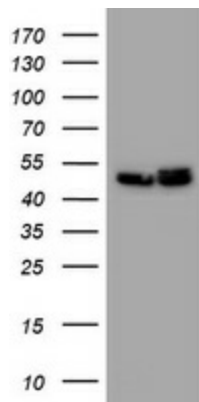
SERBP1 Mouse Monoclonal Antibody [Clone ID: OTI4G2]

Product data:

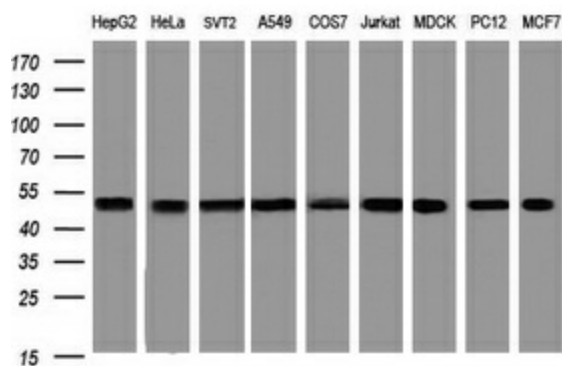
Product Type:	Primary Antibodies
Clone Name:	OTI4G2
Applications:	IHC, WB
Recommended Dilution:	WB 1:2000, IHC 1:500
Reactivity:	Human, Dog, Rat, Monkey, Mouse
Host:	Mouse
Isotype:	IgG2a
Clonality:	Monoclonal
Immunogen:	Human recombinant protein fragment corresponding to amino acids 1-262 of human SERBP1 (NP_001018078) produced in E.coli.
Formulation:	Lyophilized powder (original buffer 1X PBS, pH 7.3, 8% trehalose)
Reconstitution Method:	For reconstitution, we recommend adding 100uL distilled water to a final antibody concentration of about 1 mg/mL. To use this carrier-free antibody for conjugation experiment, we strongly recommend performing another round of desalting process. (OriGene recommends Zeba Spin Desalting Columns, 7KMWCO from Thermo Scientific)
Purification:	Purified from mouse ascites fluids or tissue culture supernatant by affinity chromatography (protein A/G)
Conjugation:	Unconjugated
Storage:	Store at -20°C as received.
Stability:	Stable for 12 months from date of receipt.
Predicted Protein Size:	44.1 kDa
Gene Name:	SERPINE1 mRNA binding protein 1
Database Link:	NP_001018078 Entrez Gene 66870 Mouse Entrez Gene 246303 Rat Entrez Gene 479535 Dog Entrez Gene 700797 Monkey Entrez Gene 26135 Human Q8NC51
Synonyms:	CGI-55; CHD3IP; HABP4L; PAI-RBP1; PAIRBP1



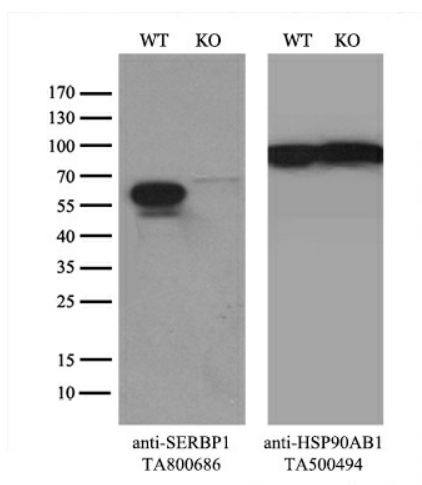
[View online »](#)

Product images:


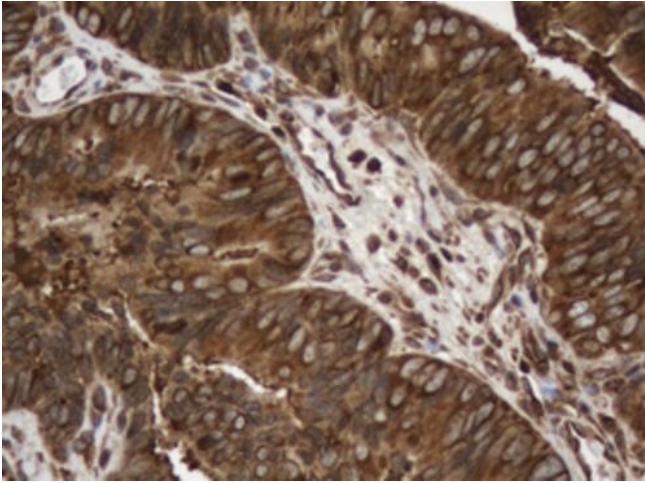
HEK293T cells were transfected with the pCMV6-ENTRY control (Left lane) or pCMV6-ENTRY SERBP1 ([RC204527], Right lane) cDNA for 48 hrs and lysed. Equivalent amounts of cell lysates (5 ug per lane) were separated by SDS-PAGE and immunoblotted with anti-SERBP1. Positive lysates [LY422719] (100ug) and [LC422719] (20ug) can be purchased separately from OriGene.



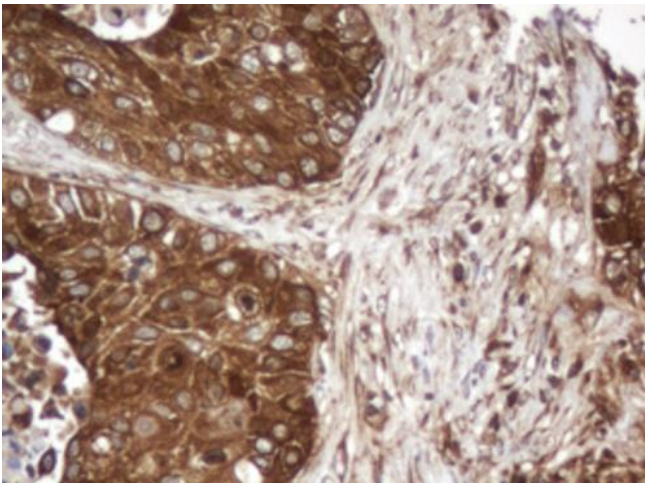
Western blot analysis of extracts (35ug) from 9 different cell lines by using anti-SERBP1 monoclonal antibody (HepG2: human; HeLa: human; SVT2: mouse; A549: human; COS7: monkey; Jurkat: human; MDCK: canine; PC12: rat; MCF7: human).



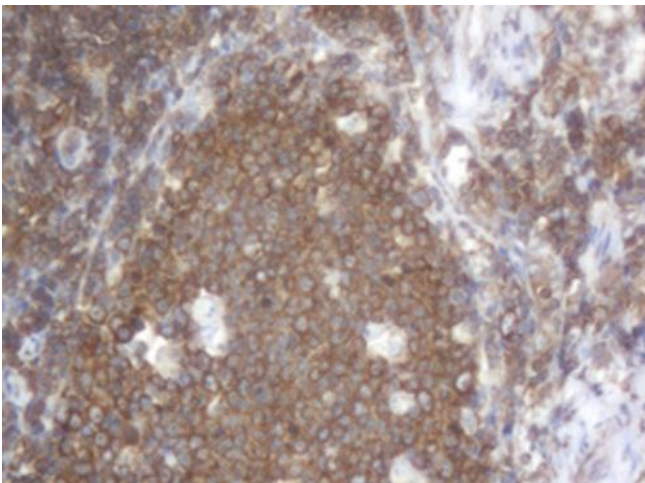
Equivalent amounts of cell lysates (10 ug per lane) of wild-type 293T cells (WT, Cat# LC810293T) and SERBP1-Knockout 293T cells (KO, Cat# [LC811318]) were separated by SDS-PAGE and immunoblotted with anti-SERBP1 monoclonal antibody [TA800686], (1:500). Then the blotted membrane was stripped and reprobed with anti-HSP90AB1 antibody ([TA500494]) as a loading control.



Immunohistochemical staining of paraffin-embedded Adenocarcinoma of Human colon tissue using anti-SERBP1 mouse monoclonal antibody. (Heat-induced epitope retrieval by 10mM citric buffer, pH6.0, 120°C for 3min, [TA800686])



Immunohistochemical staining of paraffin-embedded Carcinoma of Human lung tissue using anti-SERBP1 mouse monoclonal antibody. (Heat-induced epitope retrieval by 10mM citric buffer, pH6.0, 120°C for 3min, [TA800686])



Immunohistochemical staining of paraffin-embedded Human lymph node tissue within the normal limits using anti-SERBP1 mouse monoclonal antibody. (Heat-induced epitope retrieval by 10mM citric buffer, pH6.0, 120°C for 3min, [TA800686])