

Product datasheet for **CF800454**

PRR11 Mouse Monoclonal Antibody [Clone ID: OTI2A10]

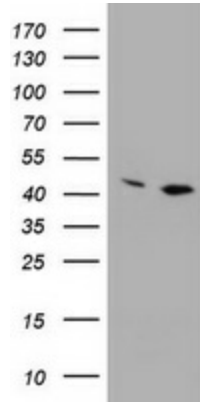
Product data:

Product Type:	Primary Antibodies
Clone Name:	OTI2A10
Applications:	IHC, WB
Recommended Dilution:	WB 1:100, IHC 1:150
Reactivity:	Human, Mouse, Rat
Host:	Mouse
Isotype:	IgG1
Clonality:	Monoclonal
Immunogen:	Human recombinant protein fragment corresponding to amino acids 125-360 of human PRR11 (NP_060774) produced in E.coli.
Formulation:	Lyophilized powder (original buffer 1X PBS, pH 7.3, 8% trehalose)
Reconstitution Method:	For reconstitution, we recommend adding 100uL distilled water to a final antibody concentration of about 1 mg/mL. To use this carrier-free antibody for conjugation experiment, we strongly recommend performing another round of desalting process. (OriGene recommends Zeba Spin Desalting Columns, 7KMWCO from Thermo Scientific)
Purification:	Purified from mouse ascites fluids or tissue culture supernatant by affinity chromatography (protein A/G)
Conjugation:	Unconjugated
Storage:	Store at -20°C as received.
Stability:	Stable for 12 months from date of receipt.
Predicted Protein Size:	39.9 kDa
Gene Name:	proline rich 11
Database Link:	NP_060774 Entrez Gene 270906 MouseEntrez Gene 360591 RatEntrez Gene 55771 Human Q96HE9
Synonyms:	FLJ11029



[View online »](#)

Product images:



HEK293T cells were transfected with the pCMV6-ENTRY control (Left lane) or pCMV6-ENTRY PRR11 ([RC201889], Right lane) cDNA for 48 hrs and lysed. Equivalent amounts of cell lysates (5 ug per lane) were separated by SDS-PAGE and immunoblotted with anti-PRR11. Positive lysates [LY413150] (100ug) and [LC413150] (20ug) can be purchased separately from OriGene.

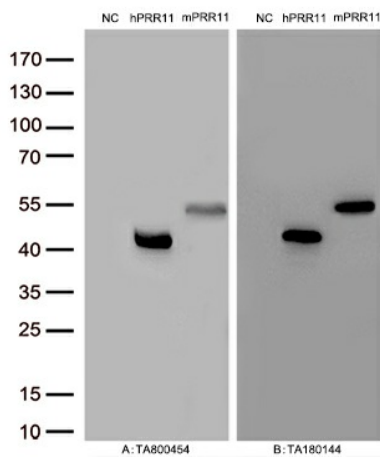
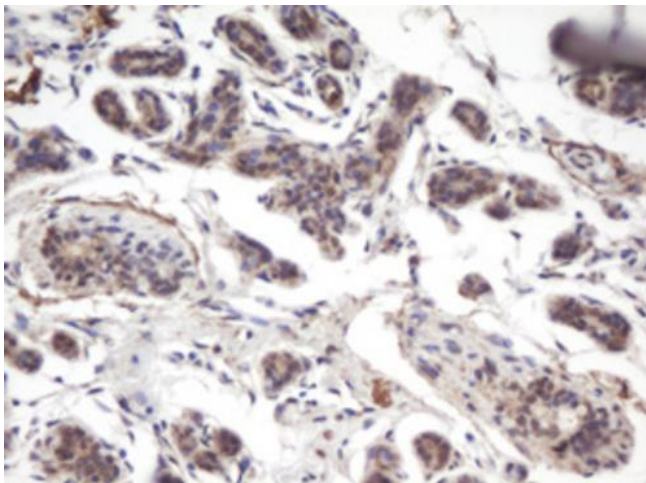
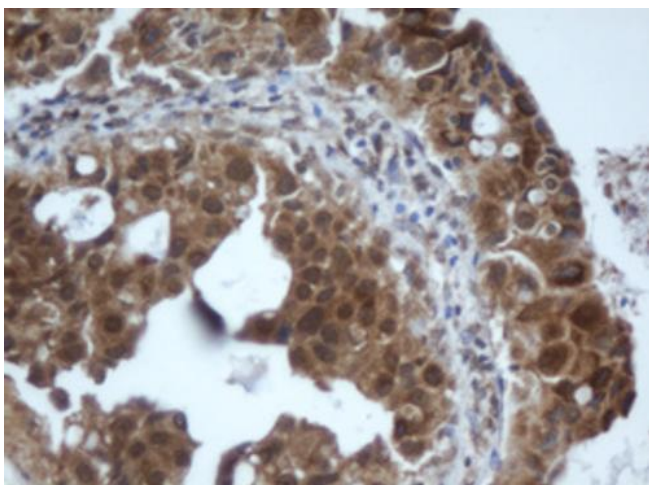


Figure A, Western blot analysis of overexpressed lysates(15ug per lane) from HEK293T cells transfected with empty plasmid ([PS100001], NC), human PRR11 plasmid ([RC201889], hPRR11), mouse PRR11 plasmid ([MR205669], mPRR11) using anti-PRR11 antibody [TA800454] (1:100). Figure B, Western blot analysis of the same samples as figure A with anti-DDK antibody ([TA180144], 1:1000)



Immunohistochemical staining of paraffin-embedded Human breast tissue within the normal limits using anti-PRR11 mouse monoclonal antibody. (Heat-induced epitope retrieval by 10mM citric buffer, pH6.0, 100°C for 10min, [TA800454])



Immunohistochemical staining of paraffin-embedded Adenocarcinoma of Human breast tissue using anti-PRR11 mouse monoclonal antibody. (Heat-induced epitope retrieval by 10mM citric buffer, pH6.0, 100°C for 10min, [TA800454])