

Product datasheet for **CF800437**

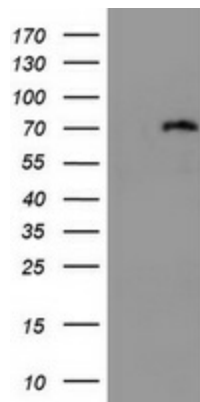
DDX59 Mouse Monoclonal Antibody [Clone ID: OTI1F8]

Product data:

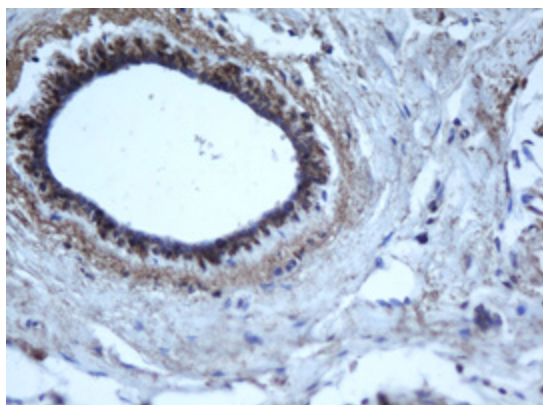
Product Type:	Primary Antibodies
Clone Name:	OTI1F8
Applications:	IHC, WB
Recommended Dilution:	WB: 1:500, IHC: 1:150
Reactivity:	Human
Host:	Mouse
Isotype:	IgG1
Clonality:	Monoclonal
Immunogen:	Human recombinant protein fragment corresponding to amino acids 1-303 of human DDX59 (NP_001026895) produced in E.coli.
Formulation:	Lyophilized powder (original buffer 1X PBS, pH 7.3, 8% trehalose)
Reconstitution Method:	For reconstitution, we recommend adding 100uL distilled water to a final antibody concentration of about 1 mg/mL. To use this carrier-free antibody for conjugation experiment, we strongly recommend performing another round of desalting process. (OriGene recommends Zeba Spin Desalting Columns, 7KMWCO from Thermo Scientific)
Purification:	Purified from mouse ascites fluids or tissue culture supernatant by affinity chromatography (protein A/G)
Conjugation:	Unconjugated
Storage:	Store at -20°C as received.
Stability:	Stable for 12 months from date of receipt.
Predicted Protein Size:	68.6 kDa
Gene Name:	Homo sapiens DEAD-box helicase 59 (DDX59), transcript variant 1, mRNA.
Database Link:	NP_001026895 Entrez Gene 83479 Human Q5T1V6
Synonyms:	OFD5; ZNHIT5



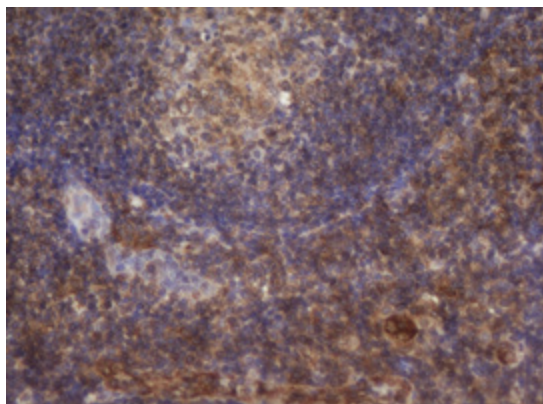
[View online »](#)

Product images:

HEK293T cells were transfected with the pCMV6-ENTRY control (Left lane) or pCMV6-ENTRY DDX59 ([RC207173], Right lane) cDNA for 48 hrs and lysed. Equivalent amounts of cell lysates (5 ug per lane) were separated by SDS-PAGE and immunoblotted with anti-DDX59. Positive lysates [LY422174] (100ug) and [LC422174] (20ug) can be purchased separately from OriGene.



Immunohistochemical staining of paraffin-embedded Human breast tissue within the normal limits using anti-DDX59 mouse monoclonal antibody. ([TA800437]) Dilution: 1:150



Immunohistochemical staining of paraffin-embedded Human tonsil within the normal limits using anti-DDX59 mouse monoclonal antibody. ([TA800437]) Dilution: 1:150