

Product datasheet for **CF800287**

AGTPBP1 Mouse Monoclonal Antibody [Clone ID: OTI9C8]

Product data:

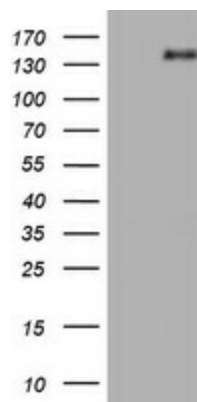
Product Type:	Primary Antibodies
Clone Name:	OTI9C8
Applications:	WB
Recommended Dilution:	WB 1:2000
Reactivity:	Human, Mouse, Rat
Host:	Mouse
Isotype:	IgG1
Clonality:	Monoclonal
Immunogen:	Human recombinant protein fragment corresponding to amino acids 368-753 of human AGTPBP1 (NP_056054) produced in E.coli.
Formulation:	Lyophilized powder (original buffer 1X PBS, pH 7.3, 8% trehalose)
Reconstitution Method:	For reconstitution, we recommend adding 100uL distilled water to a final antibody concentration of about 1 mg/mL. To use this carrier-free antibody for conjugation experiment, we strongly recommend performing another round of desalting process. (OriGene recommends Zeba Spin Desalting Columns, 7KMWCO from Thermo Scientific)
Purification:	Purified from mouse ascites fluids or tissue culture supernatant by affinity chromatography (protein A/G)
Conjugation:	Unconjugated
Storage:	Store at -20°C as received.
Stability:	Stable for 12 months from date of receipt.
Gene Name:	ATP/GTP binding carboxypeptidase 1
Database Link:	NP_056054 Entrez Gene 67269 Mouse Entrez Gene 290986 Rat Entrez Gene 23287 Human Q9UPW5
Background:	NNA1 is a zinc carboxypeptidase that contains nuclear localization signals and an ATP/GTP-binding motif that was initially cloned from regenerating spinal cord neurons of the mouse. [supplied by OMIM, Jul 2002]
Synonyms:	CCP1; NNA1



[View online »](#)

Protein Families: Protease

Product images:



HEK293T cells were transfected with the pCMV6-ENTRY control (Left lane) or pCMV6-ENTRY AGTPBP1 ([RC209238], Right lane) cDNA for 48 hrs and lysed. Equivalent amounts of cell lysates (5 ug per lane) were separated by SDS-PAGE and immunoblotted with anti-AGTPBP1. Positive lysates [LY414709] (100ug) and [LC414709] (20ug) can be purchased separately from OriGene.