

## Product datasheet for **CF800281**

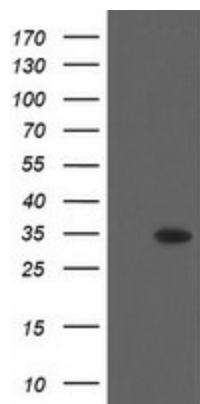
### THAP6 Mouse Monoclonal Antibody [Clone ID: OTI4D4]

#### Product data:

Product Type:	Primary Antibodies
Clone Name:	OTI4D4
Applications:	WB
Recommended Dilution:	WB 1:2000
Reactivity:	Human, Rat
Host:	Mouse
Isotype:	IgG1
Clonality:	Monoclonal
Immunogen:	Full length human recombinant protein of human THAP6 (NP_653322) produced in E.coli.
Formulation:	Lyophilized powder (original buffer 1X PBS, pH 7.3, 8% trehalose)
Reconstitution Method:	For reconstitution, we recommend adding 100uL distilled water to a final antibody concentration of about 1 mg/mL. To use this carrier-free antibody for conjugation experiment, we strongly recommend performing another round of desalting process. (OriGene recommends Zeba Spin Desalting Columns, 7KMWCO from Thermo Scientific)
Purification:	Purified from mouse ascites fluids or tissue culture supernatant by affinity chromatography (protein A/G)
Conjugation:	Unconjugated
Storage:	Store at -20°C as received.
Stability:	Stable for 12 months from date of receipt.
Predicted Protein Size:	25.5 kDa
Gene Name:	THAP domain containing 6
Database Link:	<a href="#">NP_653322</a> <a href="#">Entrez Gene 305244 RatEntrez Gene 152815 Human Q8TBB0</a>
Synonyms:	MGC30052



[View online »](#)

**Product images:**

HEK293T cells were transfected with the pCMV6-ENTRY control (Left lane) or pCMV6-ENTRY THAP6 ([RC205789], Right lane) cDNA for 48 hrs and lysed. Equivalent amounts of cell lysates (5 ug per lane) were separated by SDS-PAGE and immunoblotted with anti-THAP6. Positive lysates [LY408149] (100ug) and [LC408149] (20ug) can be purchased separately from OriGene.