

## Product datasheet for **CF800225**

### SLUG (SNAI2) Mouse Monoclonal Antibody [Clone ID: OTI2E3]

#### Product data:

Product Type:	Primary Antibodies
Clone Name:	OTI2E3
Applications:	WB
Recommended Dilution:	WB 1:2000
Reactivity:	Human, Mouse, Rat
Host:	Mouse
Isotype:	IgG1
Clonality:	Monoclonal
Immunogen:	Full length human recombinant protein of human SNAI2 (NP_003059) produced in E.coli.
Formulation:	Lyophilized powder (original buffer 1X PBS, pH 7.3, 8% trehalose)
Reconstitution Method:	For reconstitution, we recommend adding 100uL distilled water to a final antibody concentration of about 1 mg/mL. To use this carrier-free antibody for conjugation experiment, we strongly recommend performing another round of desalting process. (OriGene recommends Zeba Spin Desalting Columns, 7KMWCO from Thermo Scientific)
Purification:	Purified from mouse ascites fluids or tissue culture supernatant by affinity chromatography (protein A/G)
Conjugation:	Unconjugated
Storage:	Store at -20°C as received.
Stability:	Stable for 12 months from date of receipt.
Predicted Protein Size:	29.8 kDa
Gene Name:	snail family transcriptional repressor 2
Database Link:	<a href="#">NP_003059</a> <a href="#">Entrez Gene 20583 MouseEntrez Gene 25554 RatEntrez Gene 6591 Human O43623</a>



[View online »](#)

**Background:**

This gene encodes a member of the Snail family of C2H2-type zinc finger transcription factors. The encoded protein acts as a transcriptional repressor that binds to E-box motifs and is also likely to repress E-cadherin transcription in breast carcinoma. This protein is involved in epithelial-mesenchymal transitions and has antiapoptotic activity. Mutations in this gene may be associated with sporadic cases of neural tube defects. [provided by RefSeq]

**Synonyms:**

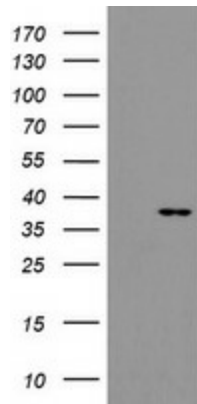
SLUG; SLUGH1; SNAIL2; WS2D

**Protein Families:**

Druggable Genome, Transcription Factors

**Protein Pathways:**

Adherens junction

**Product images:**

HEK293T cells were transfected with the pCMV6-ENTRY control (Left lane) or pCMV6-ENTRY SNAI2 ([RC202365], Right lane) cDNA for 48 hrs and lysed. Equivalent amounts of cell lysates (5 ug per lane) were separated by SDS-PAGE and immunoblotted with anti-SNAI2. Positive lysates [LY401070] (100ug) and [LC401070] (20ug) can be purchased separately from OriGene.