

## Product datasheet for **CF800202**

### MYL7 Mouse Monoclonal Antibody [Clone ID: OTI4C4]

#### Product data:

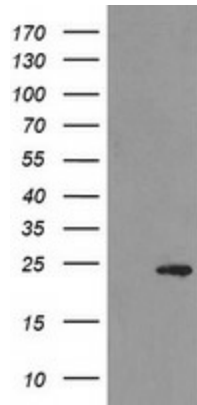
|                         |  |
|-------------------------|--|
| Product Type:           | Primary Antibodies   |
| Clone Name:             | OTI4C4   |
| Applications:           | FC, WB   |
| Recommended Dilution:   | WB 1:2000, FLOW 1:100  |
| Reactivity:             | Human, Mouse, Rat  |
| Host:                   | Mouse  |
| Isotype:                | IgG1   |
| Clonality:              | Monoclonal   |
| Immunogen:              | Full length human recombinant protein of human MYL7 (NP_067046) produced in E.coli.  |
| Formulation:            | Lyophilized powder (original buffer 1X PBS, pH 7.3, 8% trehalose)  |
| Reconstitution Method:  | For reconstitution, we recommend adding 100uL distilled water to a final antibody concentration of about 1 mg/mL. To use this carrier-free antibody for conjugation experiment, we strongly recommend performing another round of desalting process. (OriGene recommends Zeba Spin Desalting Columns, 7KMWCO from Thermo Scientific) |
| Purification:           | Purified from mouse ascites fluids or tissue culture supernatant by affinity chromatography (protein A/G)  |
| Conjugation:            | Unconjugated   |
| Storage:                | Store at -20°C as received.  |
| Stability:              | Stable for 12 months from date of receipt.   |
| Predicted Protein Size: | 19.3 kDa   |
| Gene Name:              | myosin light chain 7   |
| Database Link:          | <a href="#">NP_067046</a><br><a href="#">Entrez Gene 17898 Mouse</a> <a href="#">Entrez Gene 289759 Rat</a> <a href="#">Entrez Gene 58498 Human</a><br><a href="#">Q01449</a>  |
| Synonyms:               | MYL2A; MYLC2A  |
| Protein Families:       | Druggable Genome   |



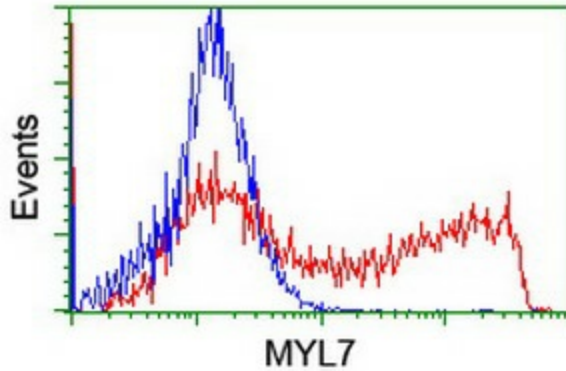
[View online »](#)

**Protein Pathways:** Focal adhesion, Leukocyte transendothelial migration, Regulation of actin cytoskeleton, Tight junction

**Product images:**



HEK293T cells were transfected with the pCMV6-ENTRY control (Left lane) or pCMV6-ENTRY MYL7 ([RC206449], Right lane) cDNA for 48 hrs and lysed. Equivalent amounts of cell lysates (5 ug per lane) were separated by SDS-PAGE and immunoblotted with anti-MYL7. Positive lysates [LY412006] (100ug) and [LC412006] (20ug) can be purchased separately from OriGene.



HEK293T cells transfected with either [RC206449] overexpress plasmid (Red) or empty vector control plasmid (Blue) were immunostained by anti-MYL7 antibody ([TA800202]), and then analyzed by flow cytometry.