

Product datasheet for **CF800184**

NYREN18 (NUB1) Mouse Monoclonal Antibody [Clone ID: OTI1F3]

Product data:

Product Type:	Primary Antibodies
Clone Name:	OTI1F3
Applications:	FC, WB
Recommended Dilution:	WB 1:2000, FLOW 1:100
Reactivity:	Human, Mouse, Rat
Host:	Mouse
Isotype:	IgG1
Clonality:	Monoclonal
Immunogen:	Human recombinant protein fragment corresponding to amino acids 1-326 of human NUB1 (NP_057202) produced in E.coli.
Formulation:	Lyophilized powder (original buffer 1X PBS, pH 7.3, 8% trehalose)
Reconstitution Method:	For reconstitution, we recommend adding 100uL distilled water to a final antibody concentration of about 1 mg/mL. To use this carrier-free antibody for conjugation experiment, we strongly recommend performing another round of desalting process. (OriGene recommends Zeba Spin Desalting Columns, 7KMWCO from Thermo Scientific)
Purification:	Purified from mouse ascites fluids or tissue culture supernatant by affinity chromatography (protein A/G)
Conjugation:	Unconjugated
Storage:	Store at -20°C as received.
Stability:	Stable for 12 months from date of receipt.
Predicted Protein Size:	68.9 kDa
Gene Name:	negative regulator of ubiquitin like proteins 1
Database Link:	NP_057202 Entrez Gene 53312 Mouse Entrez Gene 296731 Rat Entrez Gene 51667 Human Q9Y5A7
Background:	NUB1 interacts with and negatively regulates NEDD8 (MIM 603171), a ubiquitin-like protein that covalently conjugates to cullin (see MIM 603134) family members. [supplied by OMIM]

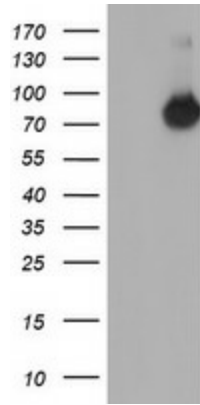


[View online »](#)

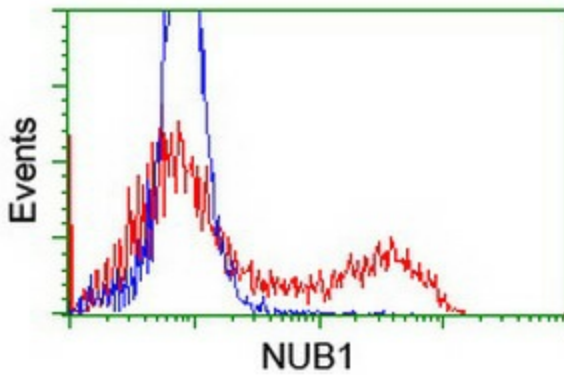
Synonyms: BS4; NUB1L; NYREN18

Protein Families: Druggable Genome

Product images:



HEK293T cells were transfected with the pCMV6-ENTRY control (Left lane) or pCMV6-ENTRY NUB1 ([RC208098], Right lane) cDNA for 48 hrs and lysed. Equivalent amounts of cell lysates (5 ug per lane) were separated by SDS-PAGE and immunoblotted with anti-NUB1. Positive lysates [LY414176] (100ug) and [LC414176] (20ug) can be purchased separately from OriGene.



HEK293T cells transfected with either [RC208098] overexpress plasmid (Red) or empty vector control plasmid (Blue) were immunostained by anti-NUB1 antibody ([TA800184]), and then analyzed by flow cytometry.