

Product datasheet for **CF800181**

MIPEP Mouse Monoclonal Antibody [Clone ID: OT11D11]

Product data:

Product Type:	Primary Antibodies
Clone Name:	OT11D11
Applications:	FC, WB
Recommended Dilution:	WB 1:2000, FLOW 1:100
Reactivity:	Human, Mouse, Rat
Host:	Mouse
Isotype:	IgG2b
Clonality:	Monoclonal
Immunogen:	Human recombinant protein fragment corresponding to amino acids 174-516 of human MIPEP (NP_005923) produced in E.coli.
Formulation:	Lyophilized powder (original buffer 1X PBS, pH 7.3, 8% trehalose)
Reconstitution Method:	For reconstitution, we recommend adding 100uL distilled water to a final antibody concentration of about 1 mg/mL. To use this carrier-free antibody for conjugation experiment, we strongly recommend performing another round of desalting process. (OriGene recommends Zeba Spin Desalting Columns, 7KMWCO from Thermo Scientific)
Purification:	Purified from mouse ascites fluids or tissue culture supernatant by affinity chromatography (protein A/G)
Conjugation:	Unconjugated
Storage:	Store at -20°C as received.
Stability:	Stable for 12 months from date of receipt.
Predicted Protein Size:	80.4 kDa
Gene Name:	mitochondrial intermediate peptidase
Database Link:	NP_005923 Entrez Gene 81684 Rat Entrez Gene 4285 Human Q99797

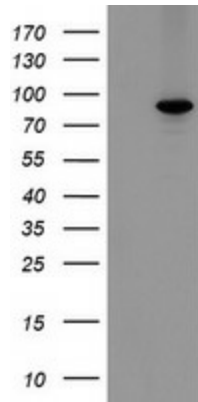
[View online »](#)

Background: The product of this gene performs the final step in processing a specific class of nuclear-encoded proteins targeted to the mitochondrial matrix or inner membrane. This protein is primarily involved in the maturation of oxidative phosphorylation (OXPHOS)-related proteins. This gene may contribute to the functional effects of frataxin deficiency and the clinical manifestations of Friedreich ataxia. [provided by RefSeq]. COMPLETENESS: complete on the 3' end.

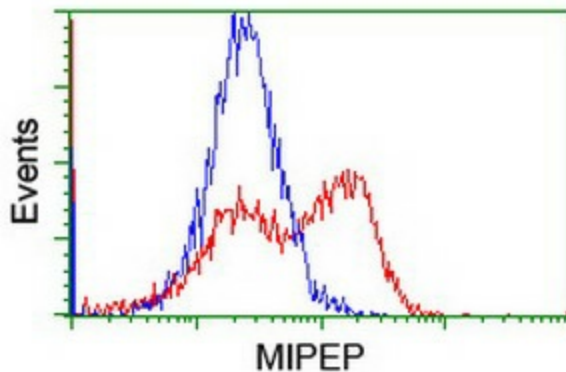
Synonyms: HMIP; MIP

Protein Families: Druggable Genome, Protease

Product images:



HEK293T cells were transfected with the pCMV6-ENTRY control (Left lane) or pCMV6-ENTRY MIPEP ([RC202465], Right lane) cDNA for 48 hrs and lysed. Equivalent amounts of cell lysates (5 ug per lane) were separated by SDS-PAGE and immunoblotted with anti-MIPEP. Positive lysates [LY416973] (100ug) and [LC416973] (20ug) can be purchased separately from OriGene.



HEK293T cells transfected with either [RC202465] overexpress plasmid (Red) or empty vector control plasmid (Blue) were immunostained by anti-MIPEP antibody ([TA800181]), and then analyzed by flow cytometry.