

Product datasheet for **CF800175**

MYL7 Mouse Monoclonal Antibody [Clone ID: OTI4E7]

Product data:

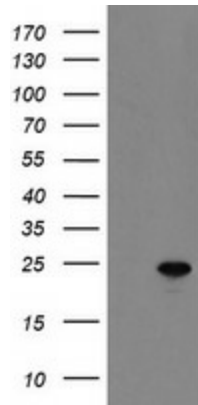
Product Type:	Primary Antibodies
Clone Name:	OTI4E7
Applications:	FC, IHC, WB
Recommended Dilution:	WB 1:2000, IHC 1:150, FLOW 1:100
Reactivity:	Human, Mouse, Rat
Host:	Mouse
Isotype:	IgG1
Clonality:	Monoclonal
Immunogen:	Full length human recombinant protein of human MYL7 (NP_067046) produced in E.coli.
Formulation:	Lyophilized powder (original buffer 1X PBS, pH 7.3, 8% trehalose)
Reconstitution Method:	For reconstitution, we recommend adding 100uL distilled water to a final antibody concentration of about 1 mg/mL. To use this carrier-free antibody for conjugation experiment, we strongly recommend performing another round of desalting process. (OriGene recommends Zeba Spin Desalting Columns, 7KMWCO from Thermo Scientific)
Purification:	Purified from mouse ascites fluids or tissue culture supernatant by affinity chromatography (protein A/G)
Conjugation:	Unconjugated
Storage:	Store at -20°C as received.
Stability:	Stable for 12 months from date of receipt.
Predicted Protein Size:	19.3 kDa
Gene Name:	myosin light chain 7
Database Link:	NP_067046 Entrez Gene 17898 Mouse Entrez Gene 289759 Rat Entrez Gene 58498 Human Q01449
Synonyms:	MYL2A; MYLC2A
Protein Families:	Druggable Genome



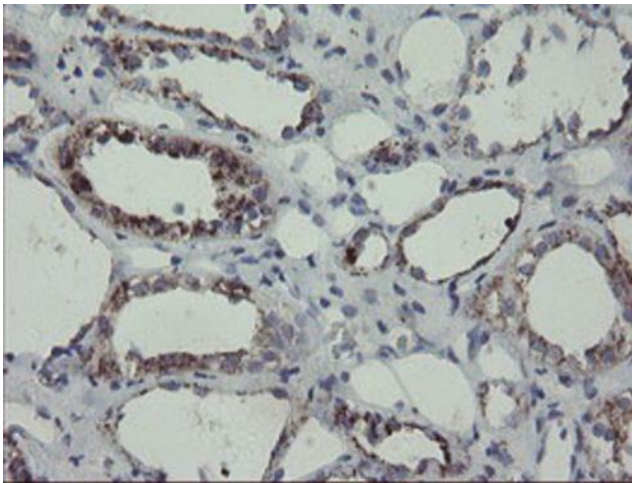
[View online »](#)

Protein Pathways: Focal adhesion, Leukocyte transendothelial migration, Regulation of actin cytoskeleton, Tight junction

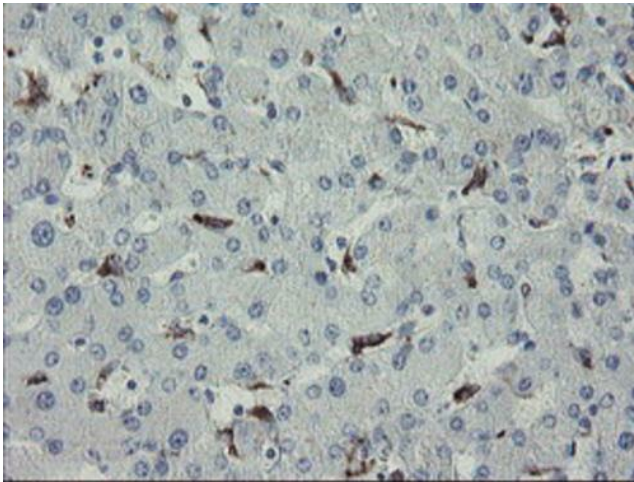
Product images:



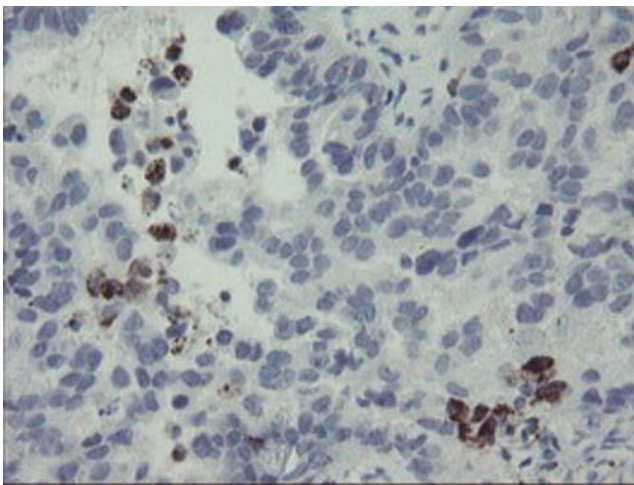
HEK293T cells were transfected with the pCMV6-ENTRY control (Cat# [PS100001], Left lane) or pCMV6-ENTRY MYL7 (Cat# [RC206449], Right lane) cDNA for 48 hrs and lysed. Equivalent amounts of cell lysates (5 ug per lane) were separated by SDS-PAGE and immunoblotted with anti-MYL7 (Cat# [TA800175]). Positive lysates [LY412006] (100ug) and [LC412006] (20ug) can be purchased separately from OriGene.



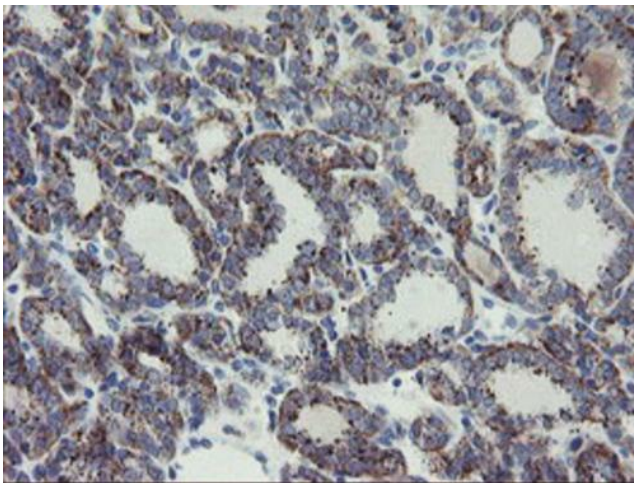
Immunohistochemical staining of paraffin-embedded Human Kidney tissue within the normal limits using anti-MYL7 mouse monoclonal antibody. (Heat-induced epitope retrieval by 10mM citric buffer, pH6.0, 100°C for 10min, [TA800175])



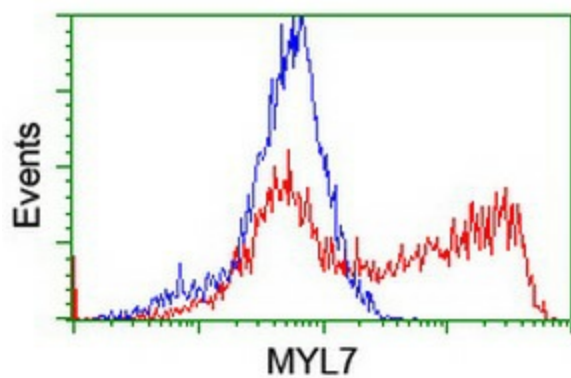
Immunohistochemical staining of paraffin-embedded Human liver tissue within the normal limits using anti-MYL7 mouse monoclonal antibody. (Heat-induced epitope retrieval by 10mM citric buffer, pH6.0, 100°C for 10min, [TA800175])



Immunohistochemical staining of paraffin-embedded Adenocarcinoma of Human ovary tissue using anti-MYL7 mouse monoclonal antibody. (Heat-induced epitope retrieval by 10mM citric buffer, pH6.0, 100°C for 10min, [TA800175])



Immunohistochemical staining of paraffin-embedded Carcinoma of Human thyroid tissue using anti-MYL7 mouse monoclonal antibody. (Heat-induced epitope retrieval by 10mM citric buffer, pH6.0, 100°C for 10min, [TA800175])



HEK293T cells transfected with either [RC206449] overexpress plasmid (Red) or empty vector control plasmid (Blue) were immunostained by anti-MYL7 antibody ([TA800175]), and then analyzed by flow cytometry.