

Product datasheet for **CF800167**

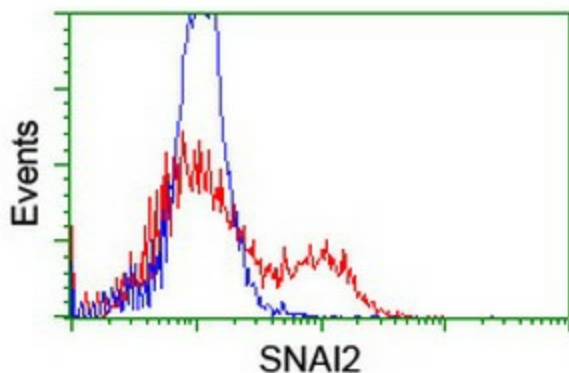
SLUG (SNAI2) Mouse Monoclonal Antibody [Clone ID: OTI1A6]

Product data:

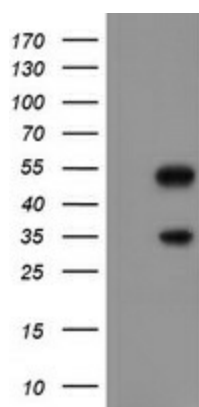
Product Type:	Primary Antibodies
Clone Name:	OTI1A6
Applications:	FC, IHC, WB
Recommend Dilution:	WB 1:1000, IHC 1:150, FLOW 1:100
Reactivity:	Human
Host:	Mouse
Isotype:	IgG1
Clonality:	Monoclonal
Immunogen:	Full length human recombinant protein of human SNAI2 (NP_003059) produced in E.coli.
Formulation:	PBS (pH7.3), 8% Trehalose
Reconstitution Method:	Reconstitute with PBS (pH7.3). To use this carrier-free antibody for conjugation experiment, we strongly recommend you to perform another round of desalting process. (OriGene recommends Zeba Spin Desalting Columns, 7KMWCO from Thermo Scientific)
Purification:	Purified from mouse ascites fluids by affinity chromatography
Predicted Protein Size:	29.8 kDa
Gene Name:	Homo sapiens snail family transcriptional repressor 2 (SNAI2), mRNA.
Database Link:	NP_003059 Entrez Gene 6591 Human
Background:	This gene encodes a member of the Snail family of C2H2-type zinc finger transcription factors. The encoded protein acts as a transcriptional repressor that binds to E-box motifs and is also likely to repress E-cadherin transcription in breast carcinoma. This protein is involved in epithelial-mesenchymal transitions and has antiapoptotic activity. Mutations in this gene may be associated with sporadic cases of neural tube defects. [provided by RefSeq]
Synonyms:	SLUG; SLUGH1; SNAIL2; WS2D
Protein Families:	Druggable Genome, Transcription Factors
Protein Pathways:	Adherens junction



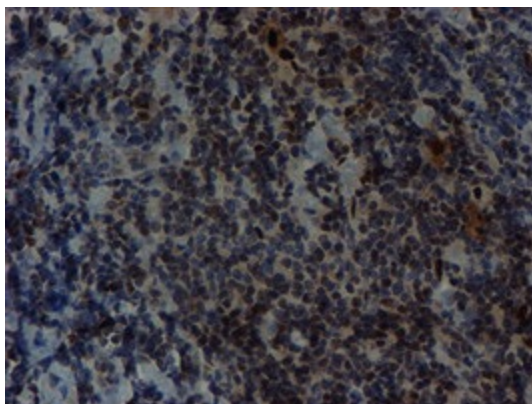
[View online »](#)

Product images:

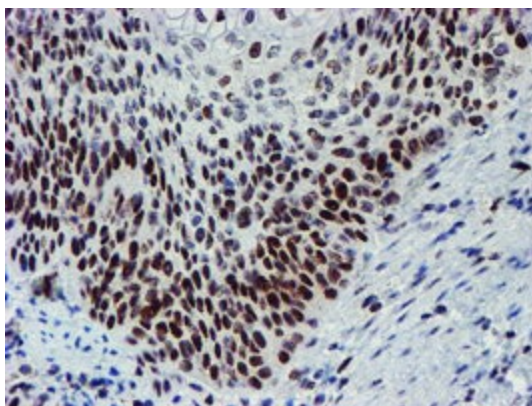
HEK293T cells transfected with either RC202365 overexpress plasmid (Red) or empty vector control plasmid (Blue) were immunostained by anti-SNAI2 antibody (TA800167), and then analyzed by flow cytometry.



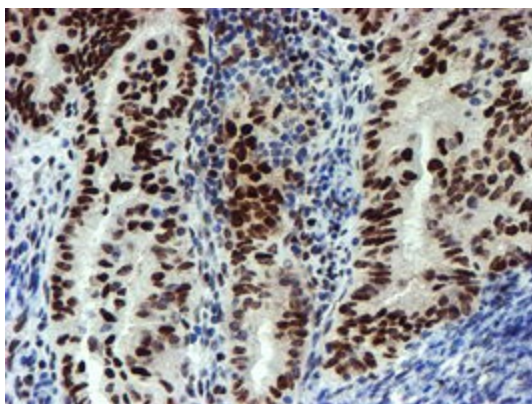
HEK293T cells were transfected with the pCMV6-ENTRY control (Left lane) or pCMV6-ENTRY SNAI2 (RC202365, Right lane) cDNA for 48 hrs and lysed. Equivalent amounts of cell lysates (5 ug per lane) were separated by SDS-PAGE and immunoblotted with anti-SNAI2. Positive lysates LY401070 (100ug) and LC401070 (20ug) can be purchased separately from OriGene.



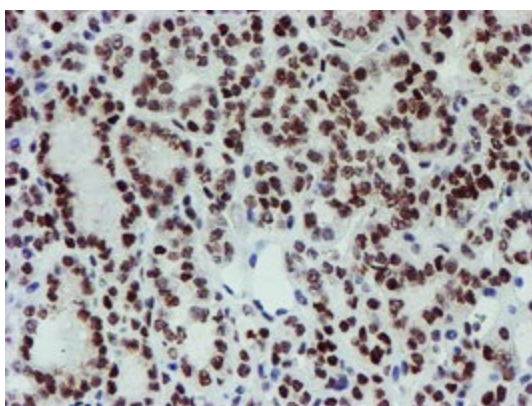
Immunohistochemical staining of paraffin-embedded Human lymphoma tissue using anti-SNAI2 mouse monoclonal antibody. (Heat-induced epitope retrieval by 10mM citric buffer, pH6.0, 100°C for 10min, TA800167)



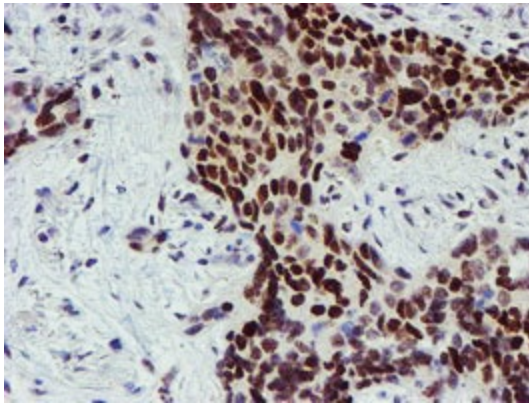
Immunohistochemical staining of paraffin-embedded Carcinoma of Human bladder tissue using anti-SNAI2 mouse monoclonal antibody. (Heat-induced epitope retrieval by 10mM citric buffer, pH6.0, 100°C for 10min, TA800167)



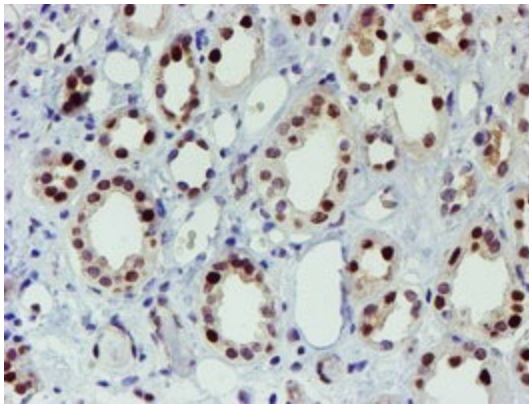
Immunohistochemical staining of paraffin-embedded Adenocarcinoma of Human endometrium tissue using anti-SNAI2 mouse monoclonal antibody. (Heat-induced epitope retrieval by 10mM citric buffer, pH6.0, 100°C for 10min, TA800167)



Immunohistochemical staining of paraffin-embedded Carcinoma of Human thyroid tissue using anti-SNAI2 mouse monoclonal antibody. (Heat-induced epitope retrieval by 10mM citric buffer, pH6.0, 100°C for 10min, TA800167)



Immunohistochemical staining of paraffin-embedded Carcinoma of Human lung tissue using anti-SNAI2 mouse monoclonal antibody. (Heat-induced epitope retrieval by 10mM citric buffer, pH6.0, 100°C for 10min, TA800167)



Immunohistochemical staining of paraffin-embedded Human Kidney tissue within the normal limits using anti-SNAI2 mouse monoclonal antibody. (Heat-induced epitope retrieval by 10mM citric buffer, pH6.0, 100°C for 10min, TA800167)

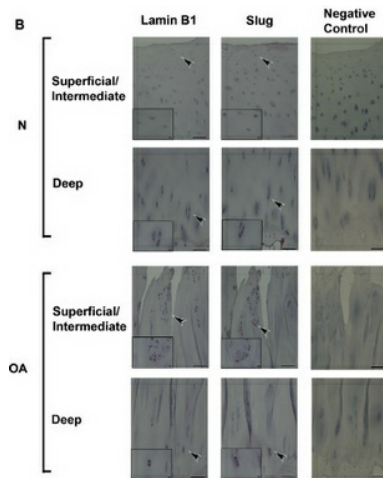


Figure from citation: Immunohistochemical analysis of Slug (also known as SNAI2) on serial sections of cartilage from normal and OA cartilage by using anti-SNAI2 antibody. Bar=100 um, Inset bar=10 um. Dilution: 1:300 [View Citation](#)