

Product datasheet for **CF800160**

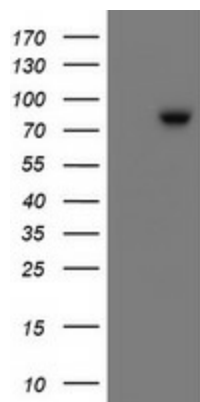
SnoN (SKIL) Mouse Monoclonal Antibody [Clone ID: OTI3F6]

Product data:

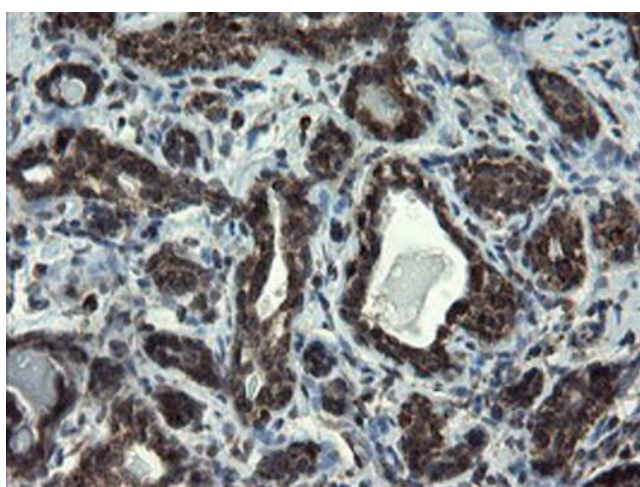
Product Type:	Primary Antibodies
Clone Name:	OTI3F6
Applications:	IHC, WB
Recommended Dilution:	WB 1:500~2000, IHC 1:150
Reactivity:	Human, Mouse, Rat
Host:	Mouse
Isotype:	IgG1
Clonality:	Monoclonal
Immunogen:	Human recombinant protein fragment corresponding to amino acids 307-684 of human SKIL (NP_005405) produced in E.coli.
Formulation:	Lyophilized powder (original buffer 1X PBS, pH 7.3, 8% trehalose)
Reconstitution Method:	For reconstitution, we recommend adding 100uL distilled water to a final antibody concentration of about 1 mg/mL. To use this carrier-free antibody for conjugation experiment, we strongly recommend performing another round of desalting process. (OriGene recommends Zeba Spin Desalting Columns, 7KMWCO from Thermo Scientific)
Purification:	Purified from mouse ascites fluids or tissue culture supernatant by affinity chromatography (protein A/G)
Conjugation:	Unconjugated
Storage:	Store at -20°C as received.
Stability:	Stable for 12 months from date of receipt.
Predicted Protein Size:	76.8 kDa
Gene Name:	SKI like proto-oncogene
Database Link:	NP_005405 Entrez Gene 20482 Mouse Entrez Gene 114208 Rat Entrez Gene 6498 Human P12757
Synonyms:	SNO; SnoA; Snol; SnoN
Protein Families:	Druggable Genome, Transcription Factors



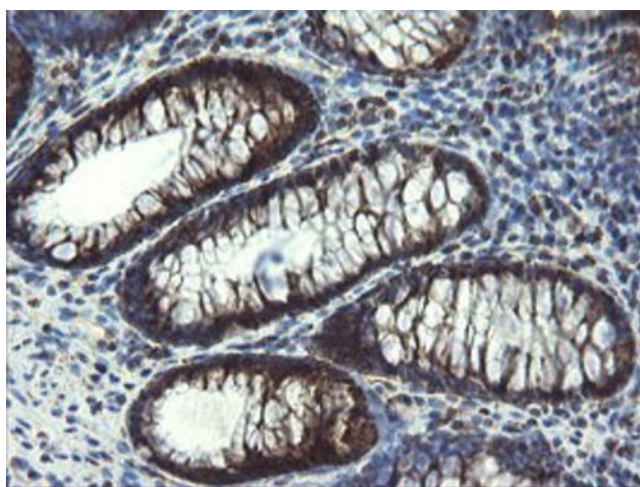
[View online »](#)

Product images:

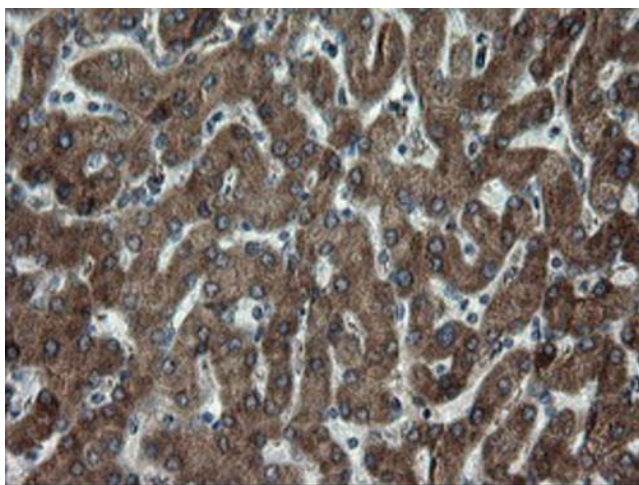
HEK293T cells were transfected with the pCMV6-ENTRY control (Left lane) or pCMV6-ENTRY SKIL ([RC209251], Right lane) cDNA for 48 hrs and lysed. Equivalent amounts of cell lysates (5 ug per lane) were separated by SDS-PAGE and immunoblotted with anti-SKIL. Positive lysates [LY417307] (100ug) and [LC417307] (20ug) can be purchased separately from OriGene.



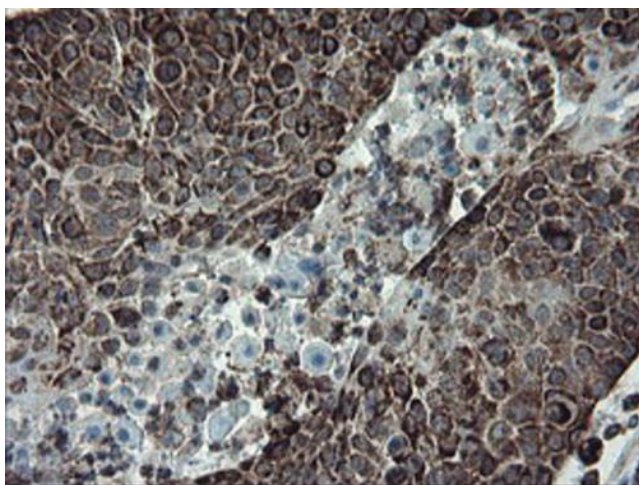
Immunohistochemical staining of paraffin-embedded Human breast tissue within the normal limits using anti-SKIL mouse monoclonal antibody. Heat-induced epitope retrieval by EDTA solution buffer pH 8.0 at 120°C for 3 min.



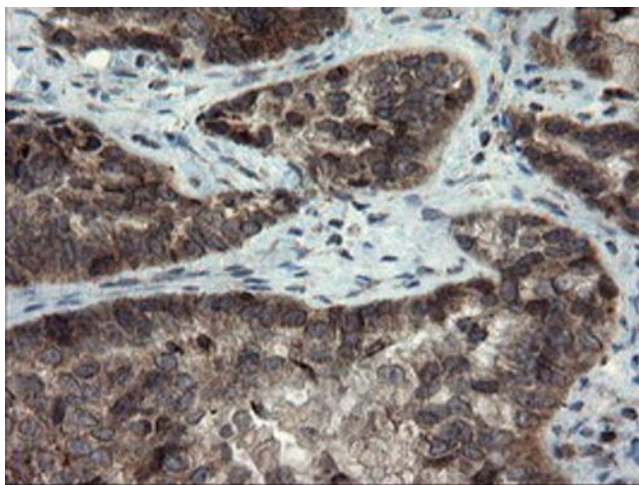
Immunohistochemical staining of paraffin-embedded Human colon tissue within the normal limits using anti-SKIL mouse monoclonal antibody. Heat-induced epitope retrieval by EDTA solution buffer pH 8.0 at 120°C for 3 min.



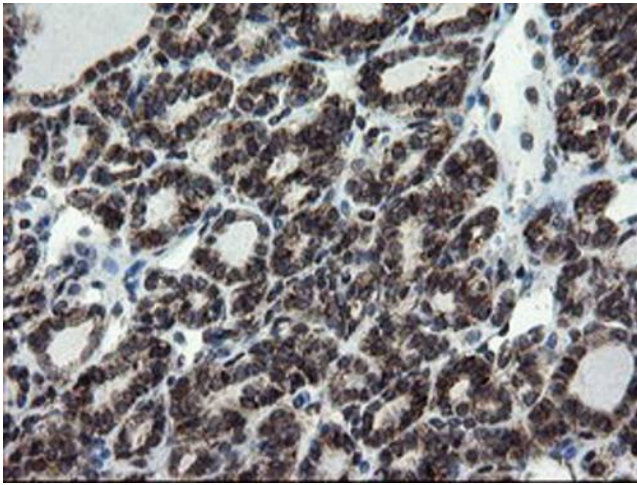
Immunohistochemical staining of paraffin-embedded Human liver tissue within the normal limits using anti-SKIL mouse monoclonal antibody. Heat-induced epitope retrieval by EDTA solution buffer pH 8.0 at 120°C for 3 min.



Immunohistochemical staining of paraffin-embedded Carcinoma of Human lung tissue using anti-SKIL mouse monoclonal antibody. Heat-induced epitope retrieval by EDTA solution buffer pH 8.0 at 120°C for 3 min.



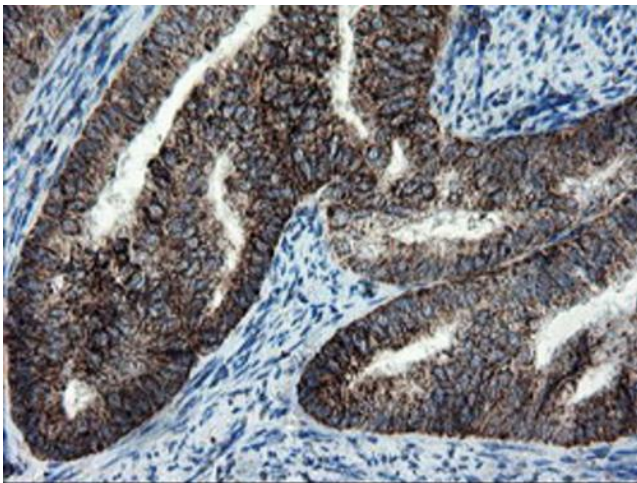
Immunohistochemical staining of paraffin-embedded Adenocarcinoma of Human ovary tissue using anti-SKIL mouse monoclonal antibody. Heat-induced epitope retrieval by EDTA solution buffer pH 8.0 at 120°C for 3 min.



Immunohistochemical staining of paraffin-embedded Carcinoma of Human thyroid tissue using anti-SKIL mouse monoclonal antibody. Heat-induced epitope retrieval by EDTA solution buffer pH 8.0 at 120°C for 3 min.



Immunohistochemical staining of paraffin-embedded Human endometrium tissue within the normal limits using anti-SKIL mouse monoclonal antibody. Heat-induced epitope retrieval by EDTA solution buffer pH 8.0 at 120°C for 3 min.



Immunohistochemical staining of paraffin-embedded Adenocarcinoma of Human endometrium tissue using anti-SKIL mouse monoclonal antibody. Heat-induced epitope retrieval by EDTA solution buffer pH 8.0 at 120°C for 3 min.