

## Product datasheet for **CF800129**

### SENP2 Mouse Monoclonal Antibody [Clone ID: OTI3D12]

#### Product data:

|                        |  |
|------------------------|--|
| Product Type:          | Primary Antibodies   |
| Clone Name:            | OTI3D12  |
| Applications:          | FC, IF, WB   |
| Recommended Dilution:  | WB 1:500~2000, IF 1:100, FLOW 1:100  |
| Reactivity:            | Human, Mouse, Rat  |
| Host:                  | Mouse  |
| Isotype:               | IgG1   |
| Clonality:             | Monoclonal   |
| Immunogen:             | Human recombinant protein fragment corresponding to amino acids 139-523 of human SENP2 (NP_067640) produced in E.coli.   |
| Formulation:           | Lyophilized powder (original buffer 1X PBS, pH 7.3, 8% trehalose)  |
| Reconstitution Method: | For reconstitution, we recommend adding 100uL distilled water to a final antibody concentration of about 1 mg/mL. To use this carrier-free antibody for conjugation experiment, we strongly recommend performing another round of desalting process. (OriGene recommends Zeba Spin Desalting Columns, 7KMWCO from Thermo Scientific)     |
| Purification:          | Purified from mouse ascites fluids or tissue culture supernatant by affinity chromatography (protein A/G)  |
| Conjugation:           | Unconjugated   |
| Storage:               | Store at -20°C as received.  |
| Stability:             | Stable for 12 months from date of receipt.   |
| Gene Name:             | SUMO specific peptidase 2  |
| Database Link:         | <a href="#">NP_067640</a><br><a href="#">Entrez Gene 75826 Mouse</a> <a href="#">Entrez Gene 78973 Rat</a> <a href="#">Entrez Gene 59343 Human</a><br><a href="#">Q9HC62</a>   |
| Background:            | SUMO1 (UBL1; MIM 601912) is a small ubiquitin-like protein that can be covalently conjugated to other proteins. SENP2 is one of a group of enzymes that process newly synthesized SUMO1 into the conjugatable form and catalyze the deconjugation of SUMO1-containing species. [supplied by OMIM]. COMPLETENESS: complete on the 3' end. |



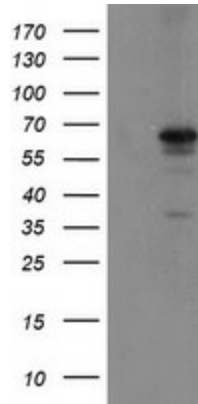
[View online »](#)

**Synonyms:** AXAM2; SMT3IP2

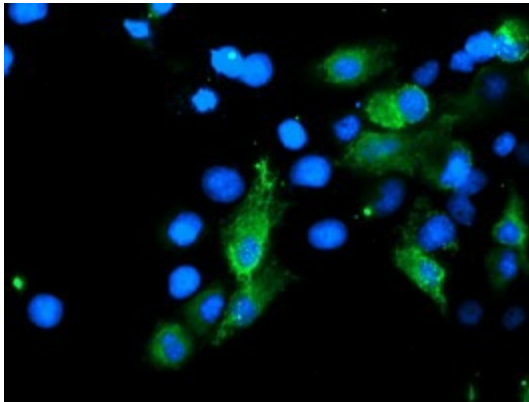
**Protein Families:** Druggable Genome, Protease

**Protein Pathways:** Wnt signaling pathway

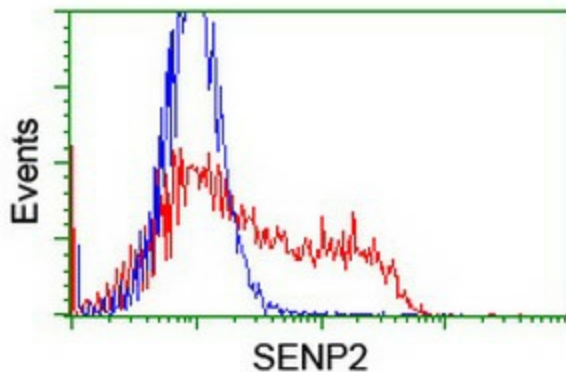
**Product images:**



HEK293T cells were transfected with the pCMV6-ENTRY control (Left lane) or pCMV6-ENTRY SENP2 ([RC208109], Right lane) cDNA for 48 hrs and lysed. Equivalent amounts of cell lysates (5 ug per lane) were separated by SDS-PAGE and immunoblotted with anti-SENP2.



Anti-SENP2 mouse monoclonal antibody ([TA800129]) immunofluorescent staining of COS7 cells transiently transfected by pCMV6-ENTRY SENP2 ([RC208109]).



HEK293T cells transfected with either [RC208109] overexpress plasmid (Red) or empty vector control plasmid (Blue) were immunostained by anti-SENP2 antibody ([TA800129]), and then analyzed by flow cytometry.