

Product datasheet for **CF800084**

C1R Mouse Monoclonal Antibody [Clone ID: OTI5A11]

Product data:

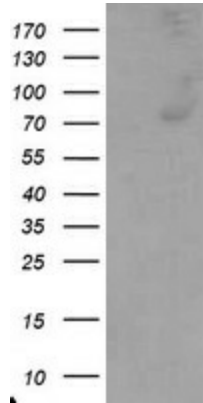
Product Type:	Primary Antibodies
Clone Name:	OTI5A11
Applications:	FC, WB
Recommended Dilution:	WB 1:2000, FLOW 1:100
Reactivity:	Human
Host:	Mouse
Isotype:	IgG1
Clonality:	Monoclonal
Immunogen:	Human recombinant protein fragment corresponding to amino acids 262-562 of human C1R (NP_001724) produced in E.coli.
Formulation:	Lyophilized powder (original buffer 1X PBS, pH 7.3, 8% trehalose)
Reconstitution Method:	For reconstitution, we recommend adding 100uL distilled water to a final antibody concentration of about 1 mg/mL. To use this carrier-free antibody for conjugation experiment, we strongly recommend performing another round of desalting process. (OriGene recommends Zeba Spin Desalting Columns, 7KMWCO from Thermo Scientific)
Purification:	Purified from mouse ascites fluids or tissue culture supernatant by affinity chromatography (protein A/G)
Conjugation:	Unconjugated
Storage:	Store at -20°C as received.
Stability:	Stable for 12 months from date of receipt.
Predicted Protein Size:	80 kDa
Gene Name:	complement C1r
Database Link:	NP_001724 Entrez Gene 715 Human P00736
Synonyms:	complement component 1; r subcomponent
Protein Families:	Druggable Genome, Protease



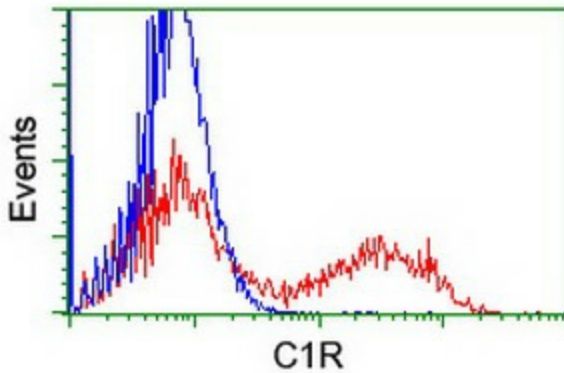
[View online »](#)

Protein Pathways: Complement and coagulation cascades, Systemic lupus erythematosus

Product images:



HEK293T cells were transfected with the pCMV6-ENTRY control (Left lane) or pCMV6-ENTRY C1R ([RC223007], Right lane) cDNA for 48 hrs and lysed. Equivalent amounts of cell lysates (5 ug per lane) were separated by SDS-PAGE and immunoblotted with anti-C1R. Positive lysates [LY400654] (100ug) and [LC400654] (20ug) can be purchased separately from OriGene.



HEK293T cells transfected with either [RC223007] overexpress plasmid (Red) or empty vector control plasmid (Blue) were immunostained by anti-C1R antibody ([TA800084]), and then analyzed by flow cytometry.