

Product datasheet for **CF800071**

UBE2E3 Mouse Monoclonal Antibody [Clone ID: OTI6D3]

Product data:

Product Type:	Primary Antibodies
Clone Name:	OTI6D3
Applications:	FC, IHC, WB
Recommended Dilution:	WB 1:2000, IHC 1:150, FLOW 1:100
Reactivity:	Human, Mouse, Rat
Host:	Mouse
Isotype:	IgG2a
Clonality:	Monoclonal
Immunogen:	Full length human recombinant protein of human UBE2E3 (NP_006348) produced in E.coli.
Formulation:	Lyophilized powder (original buffer 1X PBS, pH 7.3, 8% trehalose)
Reconstitution Method:	For reconstitution, we recommend adding 100uL distilled water to a final antibody concentration of about 1 mg/mL. To use this carrier-free antibody for conjugation experiment, we strongly recommend performing another round of desalting process. (OriGene recommends Zeba Spin Desalting Columns, 7KMWCO from Thermo Scientific)
Purification:	Purified from mouse ascites fluids or tissue culture supernatant by affinity chromatography (protein A/G)
Conjugation:	Unconjugated
Storage:	Store at -20°C as received.
Stability:	Stable for 12 months from date of receipt.
Predicted Protein Size:	22.7 kDa
Gene Name:	ubiquitin conjugating enzyme E2 E3
Database Link:	NP_006348 Entrez Gene 22193 Mouse Entrez Gene 295686 Rat Entrez Gene 10477 Human Q969T4



[View online »](#)

Background:

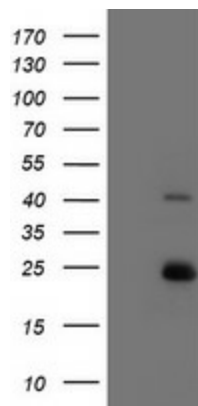
The modification of proteins with ubiquitin is an important cellular mechanism for targeting abnormal or short-lived proteins for degradation. Ubiquitination involves at least three classes of enzymes: ubiquitin-activating enzymes, or E1s, ubiquitin-conjugating enzymes, or E2s, and ubiquitin-protein ligases, or E3s. This gene encodes a member of the E2 ubiquitin-conjugating enzyme family. The encoded protein shares 100% sequence identity with the mouse and rat counterparts, which indicates that this enzyme is highly conserved in eukaryotes. Two alternatively spliced transcript variants encoding the same protein have been found for this gene. [provided by RefSeq]

Synonyms:

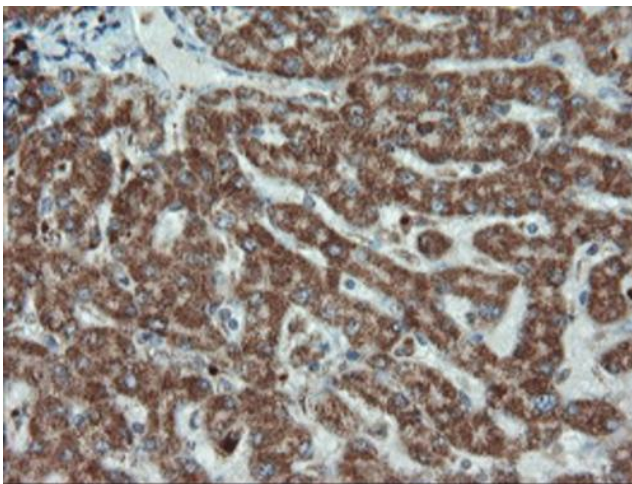
UBCH9; UbcM2

Protein Pathways:

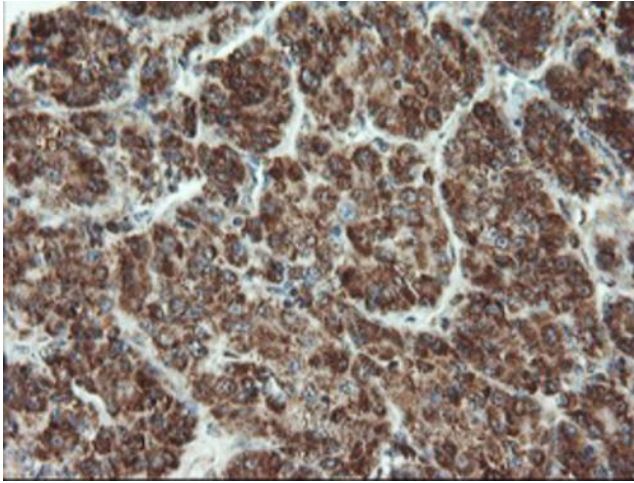
Ubiquitin mediated proteolysis

Product images:

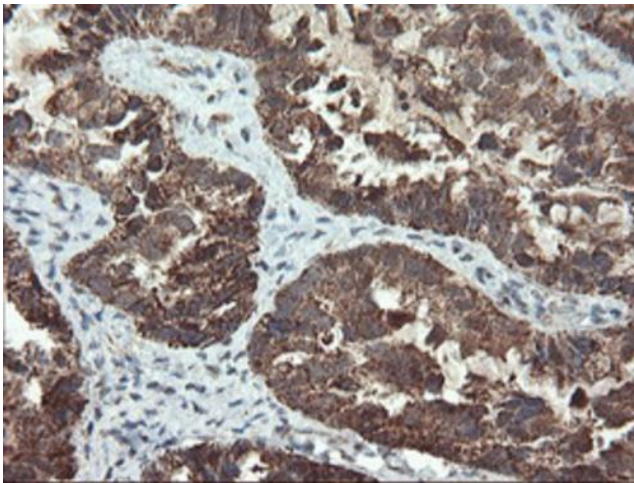
HEK293T cells were transfected with the pCMV6-ENTRY control (Left lane) or pCMV6-ENTRY UBE2E3 ([RC210328], Right lane) cDNA for 48 hrs and lysed. Equivalent amounts of cell lysates (5 ug per lane) were separated by SDS-PAGE and immunoblotted with anti-UBE2E3. Positive lysates [LY416697] (100ug) and [LC416697] (20ug) can be purchased separately from OriGene.



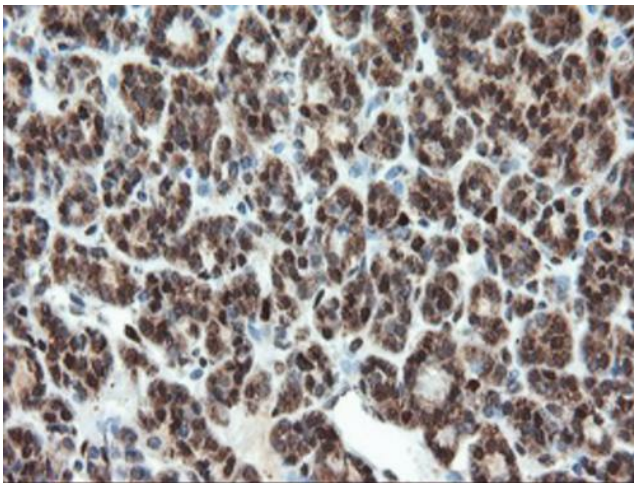
Immunohistochemical staining of paraffin-embedded Human liver tissue within the normal limits using anti-UBE2E3 mouse monoclonal antibody. (Heat-induced epitope retrieval by 10mM citric buffer, pH6.0, 100°C for 10min, [TA800071])



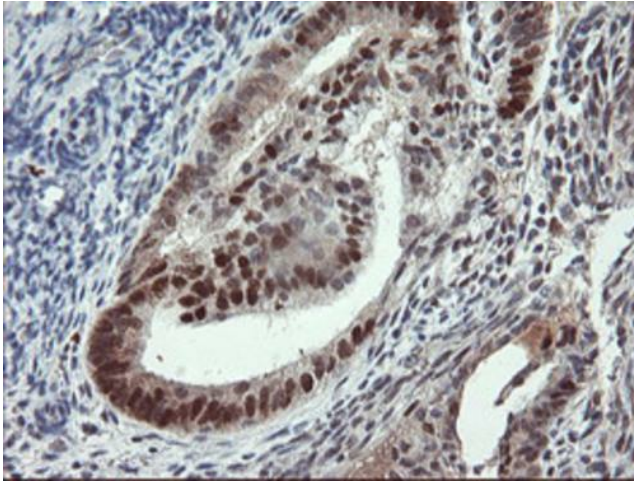
Immunohistochemical staining of paraffin-embedded Carcinoma of Human liver tissue using anti-UBE2E3 mouse monoclonal antibody. (Heat-induced epitope retrieval by 10mM citric buffer, pH6.0, 100°C for 10min, [TA800071])



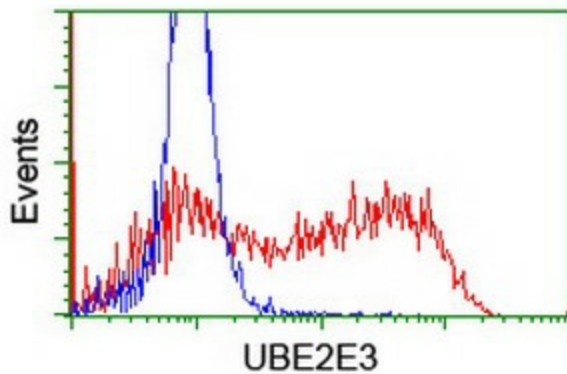
Immunohistochemical staining of paraffin-embedded Adenocarcinoma of Human ovary tissue using anti-UBE2E3 mouse monoclonal antibody. (Heat-induced epitope retrieval by 10mM citric buffer, pH6.0, 100°C for 10min, [TA800071])



Immunohistochemical staining of paraffin-embedded Carcinoma of Human thyroid tissue using anti-UBE2E3 mouse monoclonal antibody. (Heat-induced epitope retrieval by 10mM citric buffer, pH6.0, 100°C for 10min, [TA800071])



Immunohistochemical staining of paraffin-embedded Adenocarcinoma of Human endometrium tissue using anti-UBE2E3 mouse monoclonal antibody. (Heat-induced epitope retrieval by 10mM citric buffer, pH6.0, 100°C for 10min, [TA800071])



HEK293T cells transfected with either [RC210328] overexpress plasmid (Red) or empty vector control plasmid (Blue) were immunostained by anti-UBE2E3 antibody ([TA800071]), and then analyzed by flow cytometry.