

Product datasheet for **CF592786**

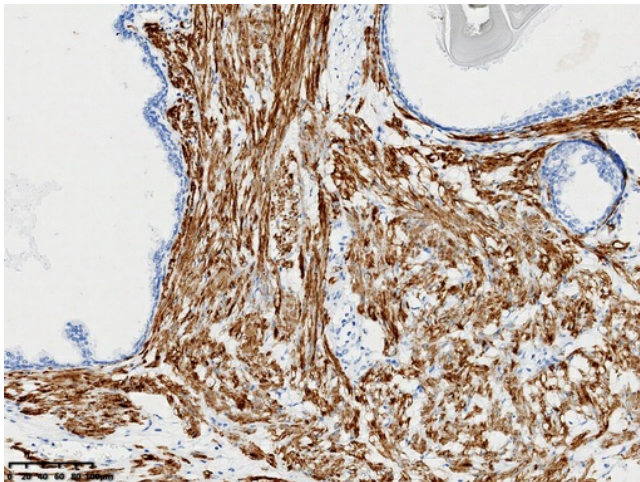
Desmin (DES) Rabbit Monoclonal Antibody [Clone ID: OTIR7G1]

Product data:

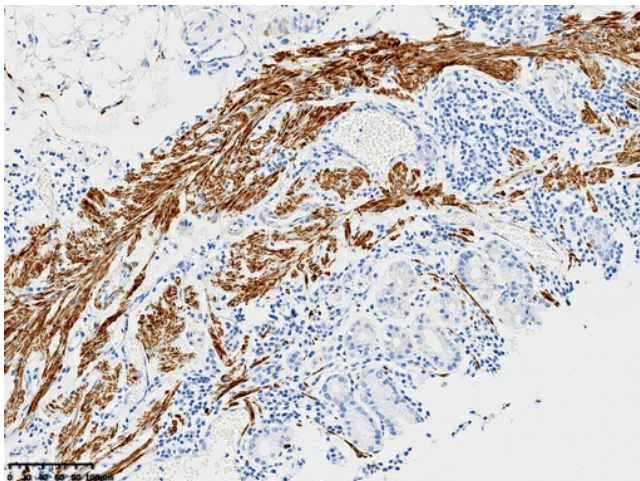
Product Type:	Primary Antibodies
Clone Name:	OTIR7G1
Applications:	IHC
Recommended Dilution:	IHC 1:2000
Reactivity:	Human
Host:	Rabbit
Isotype:	IgG
Clonality:	Monoclonal
Immunogen:	Synthetic peptide (the amino acid sequence is considered to be commercially sensitive) within Human Desmin (NP_001918). The exact sequence is proprietary.
Formulation:	Lyophilized powder (original buffer 1X PBS, pH 7.3, 8% trehalose)
Reconstitution Method:	For reconstitution, we recommend adding 100uL distilled water to a final antibody concentration of about 1 mg/mL. To use this carrier-free antibody for conjugation experiment, we strongly recommend performing another round of desalting process. (OriGene recommends Zeba Spin Desalting Columns, 7KMWCO from Thermo Scientific)
Purification:	Purified from cell culture supernatant by affinity chromatography (protein A/G)
Conjugation:	Unconjugated
Storage:	Shipped at -20°C or with ice packs, Upon delivery store at -20°C. Dilute in PBS(pH7.3) if necessary. Stable for 12 months from date of receipt. Avoid repeated freeze-thaws.
Predicted Protein Size:	53.5 kDa
Gene Name:	desmin
Database Link:	NP_001918 Entrez Gene 1674 Human P17661



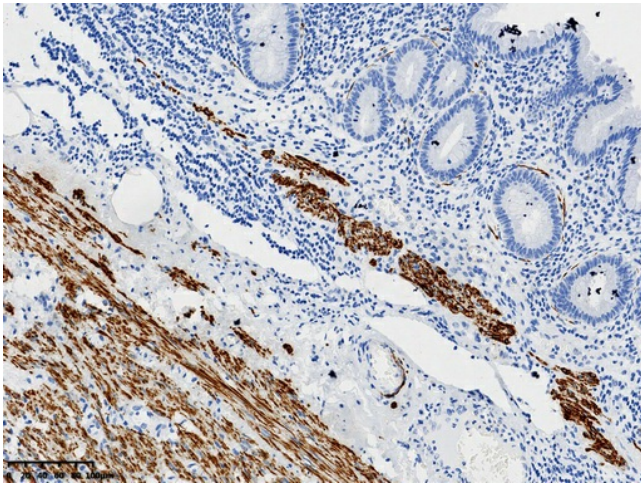
- Background:** This gene encodes a muscle-specific class III intermediate filament. Homopolymers of this protein form a stable intracytoplasmic filamentous network connecting myofibrils to each other and to the plasma membrane. Mutations in this gene are associated with desmin-related myopathy, a familial cardiac and skeletal myopathy (CSM), and with distal myopathies. [provided by RefSeq, Jul 2008]
- Synonyms:** CDCD3; CSM1; CSM2; LGMD1D; LGMD1E; LGMD2R
- Protein Families:** Druggable Genome
- Protein Pathways:** Arrhythmogenic right ventricular cardiomyopathy (ARVC), Dilated cardiomyopathy, Hypertrophic cardiomyopathy (HCM)

Product images:

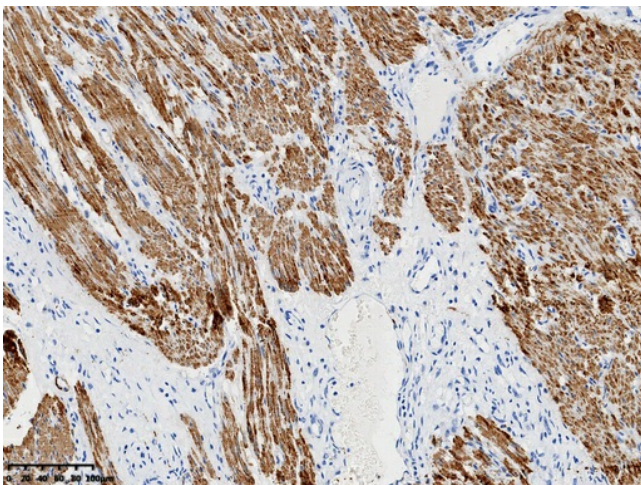
IHC staining of FFPE human prostate tissue with in the normal limits using anti-Desmin rabbit monoclonal antibody ([TA592786]) and Polink-2 HRP polymer detection kit ([D22-110]). Heat-induced epitope retrieval by EDTA solution buffer pH 8.0 ([B04C-100]) at 120°C for 3 min. The brown stain indicates positive stain, blue is the counter stain.



IHC staining of FFPE human gastric tissue with in the normal limits using anti-Desmin rabbit monoclonal antibody ([TA592786]) and Polink-2 HRP polymer detection kit ([D22-110]). Heat-induced epitope retrieval by EDTA solution buffer pH 8.0 ([B04C-100]) at 120°C for 3 min. The brown stain indicates positive stain, blue is the counter stain.



IHC staining of FFPE human appendix tissue with in the normal limits using anti-Desmin rabbit monoclonal antibody ([TA592786]) and Polink-2 HRP polymer detection kit ([D22-110]). Heat-induced epitope retrieval by EDTA solution buffer pH 8.0 ([B04C-100]) at 120°C for 3 min. The brown stain indicates positive stain, blue is the counter stain.



IHC staining of FFPE human smooth muscle tissue with in the normal limits using anti-Desmin rabbit monoclonal antibody ([TA592786]) and Polink-2 HRP polymer detection kit ([D22-110]). Heat-induced epitope retrieval by EDTA solution buffer pH 8.0 ([B04C-100]) at 120°C for 3 min. The brown stain indicates positive stain, blue is the counter stain.