

## Product datasheet for **CF507282**

### GGA2 Mouse Monoclonal Antibody [Clone ID: OT11D2]

#### Product data:

Product Type:	Primary Antibodies
Clone Name:	OT11D2
Applications:	WB
Recommended Dilution:	WB 1:4000
Reactivity:	Human, Mouse, Rat
Host:	Mouse
Isotype:	IgG2b
Clonality:	Monoclonal
Immunogen:	Full length human recombinant protein of human GGA2(NP_055859) produced in HEK293T cell
Formulation:	Lyophilized powder (original buffer 1X PBS, pH 7.3, 8% trehalose)
Reconstitution Method:	For reconstitution, we recommend adding 100uL distilled water to a final antibody concentration of about 1 mg/mL. To use this carrier-free antibody for conjugation experiment, we strongly recommend performing another round of desalting process. (OriGene recommends Zeba Spin Desalting Columns, 7KMWCO from Thermo Scientific)
Purification:	Purified from mouse ascites fluids or tissue culture supernatant by affinity chromatography (protein A/G)
Conjugation:	Unconjugated
Storage:	Store at -20°C as received.
Stability:	Stable for 12 months from date of receipt.
Predicted Protein Size:	67 kDa
Gene Name:	golgi associated, gamma adaptin ear containing, ARF binding protein 2
Database Link:	<a href="#">NP_055859</a> <a href="#">Entrez Gene 74105 Mouse</a> <a href="#">Entrez Gene 293455 Rat</a> <a href="#">Entrez Gene 23062 Human</a> <a href="#">Q9UJY4</a>



[View online »](#)

**Background:**

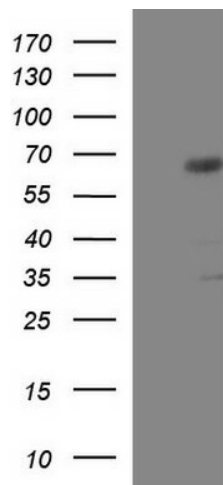
This gene encodes a member of the Golgi-localized, gamma adaptin ear-containing, ARF-binding (GGA) family. This family includes ubiquitous coat proteins that regulate the trafficking of proteins between the trans-Golgi network and the lysosome. These proteins share an amino-terminal VHS domain which mediates sorting of the mannose 6-phosphate receptors at the trans-Golgi network. They also contain a carboxy-terminal region with homology to the ear domain of gamma-adaptins. This family member may play a significant role in cargo molecules regulation and clathrin-coated vesicle assembly. [provided by RefSeq, Jul 2008]

**Synonyms:**

VEAR

**Protein Pathways:**

Lysosome

**Product images:**

HEK293T cells were transfected with the pCMV6-ENTRY control (Cat# [PS100001], Left lane) or pCMV6-ENTRY GGA2 (Cat# [RC200153], Right lane) cDNA for 48 hrs and lysed. Equivalent amounts of cell lysates (5 ug per lane) were separated by SDS-PAGE and immunoblotted with anti-GGA2 (Cat# [TA507282]). Positive lysates [LY414846] (100ug) and [LC414846] (20ug) can be purchased separately from OriGene.