

## Product datasheet for **CF507217**

### **PAAF1 Mouse Monoclonal Antibody [Clone ID: OTI2G6]**

#### **Product data:**

<b>Product Type:</b>	Primary Antibodies
<b>Clone Name:</b>	OTI2G6
<b>Applications:</b>	WB
<b>Recommended Dilution:</b>	WB 1:1000
<b>Reactivity:</b>	Human
<b>Host:</b>	Mouse
<b>Isotype:</b>	IgG2b
<b>Clonality:</b>	Monoclonal
<b>Immunogen:</b>	Full length human recombinant protein of human PAAF1(NP_079431) produced in HEK293T cell.
<b>Formulation:</b>	Lyophilized powder (original buffer 1X PBS, pH 7.3, 8% trehalose)
<b>Reconstitution Method:</b>	For reconstitution, we recommend adding 100uL distilled water to a final antibody concentration of about 1 mg/mL. To use this carrier-free antibody for conjugation experiment, we strongly recommend performing another round of desalting process. (OriGene recommends Zeba Spin Desalting Columns, 7KMWCO from Thermo Scientific)
<b>Purification:</b>	Purified from mouse ascites fluids or tissue culture supernatant by affinity chromatography (protein A/G)
<b>Conjugation:</b>	Unconjugated
<b>Storage:</b>	Store at -20°C as received.
<b>Stability:</b>	Stable for 12 months from date of receipt.
<b>Predicted Protein Size:</b>	42 kDa
<b>Gene Name:</b>	proteasomal ATPase associated factor 1
<b>Database Link:</b>	<a href="#">NP_079431</a> <a href="#">Entrez Gene 80227 Human</a> <a href="#">Q9BRP4</a>



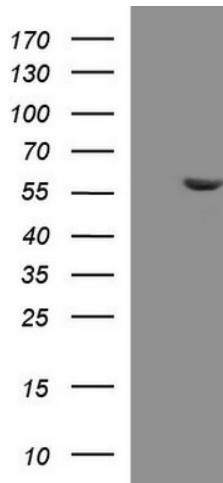
[View online »](#)

**Background:**

This gene encodes a WD repeat-containing protein involved in regulation of association of proteasome components. During HIV infection, the encoded protein is thought to promote provirus transcription through recruitment of the 19S regulatory complex. Alternatively spliced transcript variants encoding multiple isoforms have been observed for this gene. [provided by RefSeq, Jun

**Synonyms:**

PAAF; Rpn14; WDR71

**Product images:**

HEK293T cells were transfected with the pCMV6-ENTRY control (Left lane) or pCMV6-ENTRY PAAF1 ([RC202994], Right lane) cDNA for 48 hrs and lysed. Equivalent amounts of cell lysates (5 ug per lane) were separated by SDS-PAGE and immunoblotted with anti-PAAF1. Positive lysates [LY410872] (100ug) and [LC410872] (20ug) can be purchased separately from OriGene.