

Product datasheet for **CF507184**

Sex Hormone Binding Globulin (SHBG) Mouse Monoclonal Antibody [Clone ID: OTI1G2]

Product data:

Product Type:	Primary Antibodies
Clone Name:	OTI1G2
Applications:	IF, WB
Recommended Dilution:	WB 1:2000, IF: 1:100
Reactivity:	Human
Host:	Mouse
Isotype:	IgG1
Clonality:	Monoclonal
Immunogen:	Full length human recombinant protein of human SHBG(NP_001139751) produced in HEK293T cell.
Formulation:	Lyophilized powder (original buffer 1X PBS, pH 7.3, 8% trehalose)
Reconstitution Method:	For reconstitution, we recommend adding 100uL distilled water to a final antibody concentration of about 1 mg/mL. To use this carrier-free antibody for conjugation experiment, we strongly recommend performing another round of desalting process. (OriGene recommends Zeba Spin Desalting Columns, 7KMWCO from Thermo Scientific)
Purification:	Purified from mouse ascites fluids or tissue culture supernatant by affinity chromatography (protein A/G)
Conjugation:	Unconjugated
Storage:	Store at -20°C as received.
Stability:	Stable for 12 months from date of receipt.
Predicted Protein Size:	38.4 kDa
Gene Name:	sex hormone binding globulin
Database Link:	NP_001139751 Entrez Gene 6462 Human P04278



[View online »](#)

Background:

This gene encodes a steroid binding protein that was first described as a plasma protein secreted by the liver but is now thought to participate in the regulation of steroid responses. The encoded protein binds each steroid molecule as a dimer formed from identical or nearly identical monomers. The use of alternate promoters and alternatively spliced transcripts have been described. Multiple transcript variants encoding different isoforms have been found for this gene. [provided by RefSeq, Apr 2009]

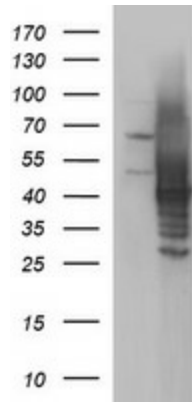
Synonyms:

ABP; SBP; TEBG

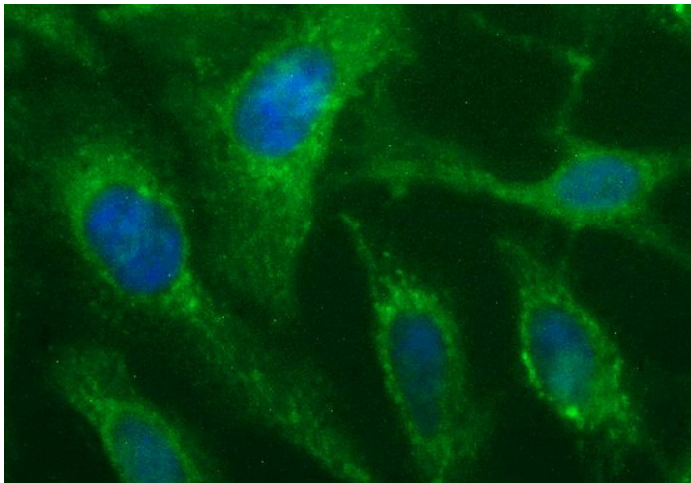
Protein Families:

Druggable Genome, Secreted Protein

Product images:



HEK293T cells were transfected with the pCMV6-ENTRY control (Left lane) or pCMV6-ENTRY SHBG ([RC228307], Right lane) cDNA for 48 hrs and lysed. Equivalent amounts of cell lysates (5 ug per lane) were separated by SDS-PAGE and immunoblotted with anti-SHBG. Positive lysates [LY431335] (100ug) and [LC431335] (20ug) can be purchased separately from OriGene.



Immunofluorescent staining of HeLa cells using anti-SHBG mouse monoclonal antibody ([TA507184]).