

## Product datasheet for **CF507124**

### Collagen XV (COL15A1) Mouse Monoclonal Antibody [Clone ID: OT11C5]

#### Product data:

Product Type:	Primary Antibodies
Clone Name:	OT11C5
Applications:	IF, WB
Recommended Dilution:	WB 1:4000
Reactivity:	Human
Host:	Mouse
Isotype:	IgG1
Clonality:	Monoclonal
Immunogen:	Full length human recombinant protein of human COL15A1(NP_001846) produced in HEK293T cell.
Formulation:	Lyophilized powder (original buffer 1X PBS, pH 7.3, 8% trehalose)
Reconstitution Method:	For reconstitution, we recommend adding 100uL distilled water to a final antibody concentration of about 1 mg/mL. To use this carrier-free antibody for conjugation experiment, we strongly recommend performing another round of desalting process. (OriGene recommends Zeba Spin Desalting Columns, 7KMWCO from Thermo Scientific)
Purification:	Purified from mouse ascites fluids or tissue culture supernatant by affinity chromatography (protein A/G)
Conjugation:	Unconjugated
Storage:	Store at -20°C as received.
Stability:	Stable for 12 months from date of receipt.
Predicted Protein Size:	138.9 kDa
Gene Name:	collagen type XV alpha 1 chain
Database Link:	<a href="#">NP_001846</a> <a href="#">Entrez Gene 1306 Human</a> <a href="#">P39059</a>



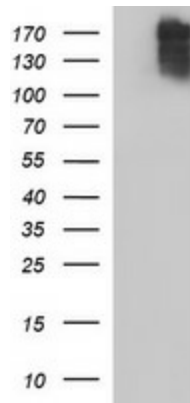
[View online »](#)

**Background:**

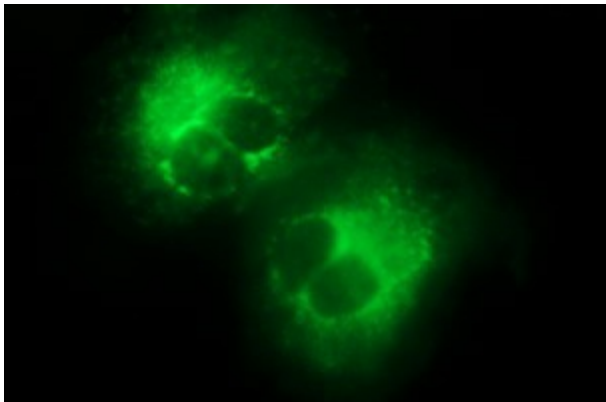
This gene encodes the alpha chain of type XV collagen, a member of the FACIT collagen family (fibril-associated collagens with interrupted helices). Type XV collagen has a wide tissue distribution but the strongest expression is localized to basement membrane zones so it may function to adhere basement membranes to underlying connective tissue stroma. Mouse studies have shown that collagen XV deficiency is associated with muscle and microvessel deterioration. [provided by RefSeq, Jul 2008]

**Synonyms:**

FLJ38566

**Product images:**


HEK293T cells were transfected with the pCMV6-ENTRY control (Cat# [PS100001], Left lane) or pCMV6-ENTRY COL15A1 (Cat# [RC215981], Right lane) cDNA for 48 hrs and lysed. Equivalent amounts of cell lysates (5 ug per lane) were separated by SDS-PAGE and immunoblotted with anti-COL15A1 (Cat# [TA507124]). Positive lysates [LY419713] (100ug) and [LC419713] (20ug) can be purchased separately from OriGene.



Anti-COL15A1 mouse monoclonal antibody ([TA507124]) immunofluorescent staining of COS7 cells transiently transfected by pCMV6-ENTRY COL15A1 ([RC215981]).